



Nikau
FOUNDATION

Impact Report 2019

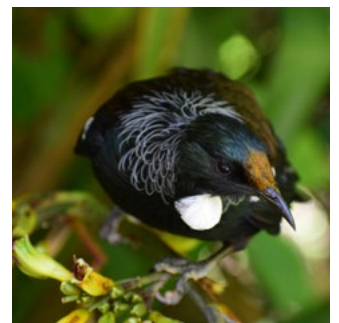




Nikau Foundation is the Wellington region's community foundation. Together, we are building a lasting legacy for the people and places we love.

Our vision

By nurturing a culture of philanthropy for our region, we will help ensure that our communities are healthy, resilient and richly diverse. Conserving our natural heritage, cultivating creativity, supporting youth and the health and wellbeing of our communities, we will be there for our region, now and in the future.



Our story

Established in 1991, our smarter giving model builds long-term, reliable funding streams for our local communities by investing and growing the donations we receive. It's not really giving to us, but through us. And it means your generosity will have benefits forever.

We are part of a world-wide network. Across Aotearoa New Zealand, there are 17 community foundations made up of local people who are passionate about where they live. Strongly connected to our community, we are tuned in to their needs and work to ensure local generosity goes to local causes. Our aim is for every New Zealander to be able to effect lasting change wherever their home or heart is.

Over the last year, we have almost doubled in size – growing together for our region. That means more forever funds being established and more grants than ever supporting our communities to flourish. We know our achievements are a result of the unwavering passion and commitment of our network of supporters and volunteers.



Our philosophy

We are guided by our people

Donors can decide who and what their giving goes to. They can establish a fund individually or get the children involved and give as a family, while others choose to honour someone dear to them – it's your gift, your say.

We are connected

Nikau Foundation has deep roots within our community and can advise where the great, impactful work is going on. This means we are perfectly placed to ensure that your giving is influencing the things you care about most locally. Whether it's the arts, te ao Māori, education, environment, health, sports, heritage, youth development, social services or anything else, we work with you to find the right way to give to meet your aspirations for your community.

We invest for the future

We are building permanent funding streams to achieve long-term community transformation. Donations are invested so they can grow and provide reliable sources of income. It is the interest your giving earns that will be distributed to local causes; the gift itself remains protected so it can continue to benefit your chosen cause well into the future. Our model offers enduring trusteeship, meaning your fund will be guided and governed by a board of passionate and connected people forever.

We are trusted

We are transparent in all our processes and ensure that our donors feel connected and informed with their investment and the difference they are making in the community. We are cost-effective – taking care of all the administration, reporting and financial management. If you have an existing charitable trust (or are considering establishing one), Nikau Foundation can offer easier options for management around compliance, investments, effective grant-making and more. We provide the means to run a charitable trust, without the significant workload, while your trust's original purpose continues on.



People

Supporting our local communities with the resources they need to thrive

A blue graphic with white curved lines, resembling a stylized rainbow or a series of parallel arcs.

Places

Protecting and preserving our unique natural and physical environment

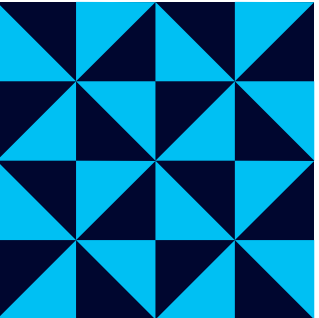
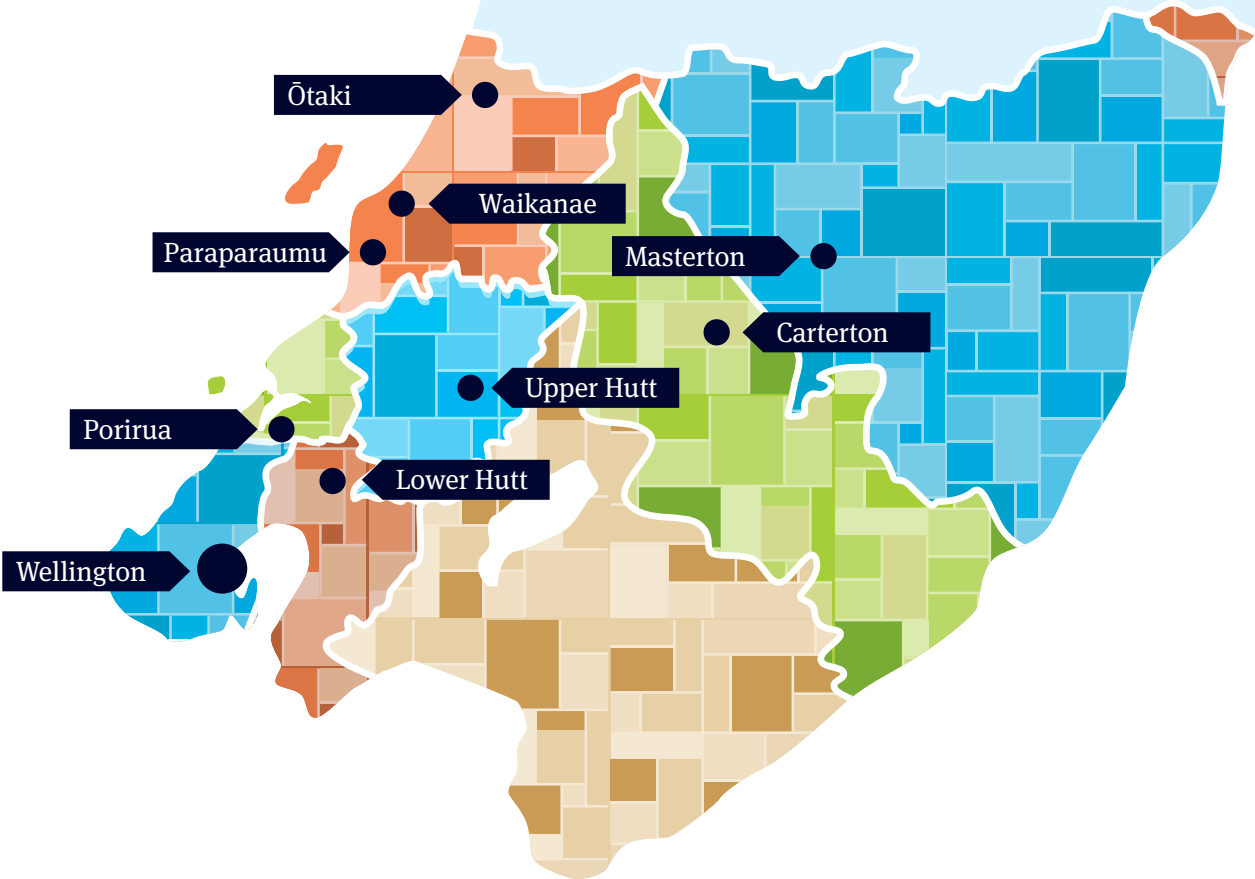
An orange graphic with white curved lines, similar in style to the 'People' block.

Guardians

Behind every dollar we give, there is a story – we will ensure that these are told for generations to come

An orange graphic with white curved lines, similar in style to the other blocks.

Where we work



Contents

A letter from the Chair	4
A letter from the Executive Director	5
2019 philanthropy highlights	6
2019 Grants	7
An intergenerational fund	14
Game-changing funding	16
Making classical concerts affordable	17
Our community – Wairarapa	18
Cloak of support	19
Our community – Kāpiti	20
The business of giving back	21
Our community – Porirua	22
Growing generosity across the region	23
Nurturing a culture of philanthropy	24
Partners in the funding long-game	26
Securing a brighter region through partnerships	27
Michael and Suzanne Borrin Foundation	28
Providing practical support	29
Our partners	30
Roy and Jan Mace Trust	32
Creating the heart of the home	33
Growing an invaluable asset for Porirua City	34
Our people	35
Our model	36
Our finances	38
Our year	40

A letter from the Chair

Nikau Foundation has enjoyed a year of substantial progress, with a major refresh of the Board, welcoming our new Executive Director Alice Montague and a 100% increase in endowment funds.

During the year Trust Porirua, after public consultation and considering many other options, passed all its \$5.5 million in funds to Nikau Foundation. Due to our efficient operations and pro bono governance structure, the Porirua community will now benefit from an additional \$100,000 in annual grants. The transfer has been a milestone for us and is testament to the confidence that others have both in Nikau and in the community foundation model.

Our rapid growth over the last three years has presented many challenges. This year, we developed new policies and improved risk management processes. We also rewrote our trust deed and revised our board committee structure.

Following a review of Board skills and balance, we undertook a publicly advertised recruitment process. We were delighted with the calibre of people wanting to join us, and we welcomed six new trustees: Adrian Orr, Adrienne Olsen, Rachel Roberts, Jill Day, Rebecca Morahan and Peter Verhaart. In addition, Jackie Robertson was co-opted to the Audit and Risk Committee

and Tony Paine to the Grants Committee. The new Board has a wide range of experience and cognitive diversity, providing an excellent platform for the future.

Our major challenge remains to become better known so that everyone in the Wellington region sees Nikau as their community foundation – understanding what we do, how we do it and inspiring others to get involved.

Nikau's strength is the large number of committed people, representing all our communities, who bring their local knowledge and work together around a common mission – to build a stronger and more resilient region.

Founding Board member Kevin O'Connor retired having served 28 years as a trustee, nine of them as Chair. We thank Kevin for his huge contribution, not only in governance leadership but also as a donor. Ian Cassels also retired after seven years on the Board, having guided us through many property-related matters and generously supporting Nikau Foundation with office space just when we needed it.

Our Nikau Club donors have loyally supported the Foundation for many years. Through their generosity, we have been able to grow our reach and impact across the region. They remain a cornerstone of Nikau Foundation's success, and we would not be where we are today without them.

I would like to thank the Board, past and present, for the hard work they have put into Nikau Foundation over the last year. It has been a year of growing maturity and depth at all levels.

This has been assisted hugely by the committed team in our office and the combined efforts of our volunteers, particularly in Porirua, Kāpiti and Wairarapa.

Lastly, I would like to acknowledge all of our supporters and donors who volunteer their time and advocate for us – thank you.

“
Nikau's strength is the large number of committed people, representing all our communities, who bring their local knowledge and work together around a common mission – to build a stronger and more resilient region. ”



A handwritten signature in black ink, appearing to read 'Chris Milne', with a stylized flourish at the end.

Chris Milne
Chair

A letter from the Executive Director

Success is not the work of one person, but the work of many.
Ehara taku toa i te toa takitahi, engari he toa takitini.

We are delighted to bring you the 2019 Impact Report.

It has been another period of significant growth for the Foundation. We ended the year with over 45 funds totalling over \$17 million, ensuring we can deliver even more transformative change for our communities. This allowed us to give out over 150 grants to the community, benefiting a wide range of causes, from the arts to health organisations, from youth to the environment.

In August, we confirmed a new three-year strategy that will see us continue to focus on our growth, increasing our profile and delivering greater impact to the community. A key part of our success lies in ensuring more people know about Nikau Foundation, and we're excited to showcase our new brand in this document.

As we reflect on the last year, it seems only right to celebrate the people who have been at the heart of Nikau Foundation's achievements.

It is a privilege to be able to share with you a selection of stories from the grant recipients and the remarkable donors whose generosity in creating forever funds has ensured causes close to their hearts can be supported.

We feature the work of Vibe, House of Grace, Te Ara Korowai and Greytown Music Group. Their stories bring to life the impact a grant can have on their community and the people they work with. 2019 was our largest year for grant-making, and hearing direct from the charities we partner with is an important reminder of the power of philanthropy.

Increasingly, people are thinking strategically about their giving, and the community foundations model is proving to be a very attractive and effective solution in enabling them to meet their philanthropic goals. This year, we've had an additional 11 funds set up with us, inspired by the impact community foundations are having across Aotearoa New Zealand.

In this report, we hear from Porirua residents Chris and Helen Kirk-Burnnand, whose fund supports youth leadership in Porirua. They are both passionate about their community and emphasise the importance of giving back to where you live. We also hear from two generations of the Milne family, whose family fund supports the environment and the arts. It is inspiring to learn how the whole family is now involved in honouring Barbara's memory through their grant-making.

It isn't just individuals who've set up funds with us. Many organisations are thinking long term about their financial sustainability and the certainty that comes from having a fund. Pat Stuart, the Chief Executive of Experience Wellington, shares their motivations for investing with Nikau Foundation.

We acknowledge the support of our wonderful staff, trustees, donors and supporters. We could not have achieved what we have without you. Thank you. We must also thank past staff and board members for their contribution. We said goodbye to Louise Parkin and Matthew Reweti and to two of our trustees, Ian Cassels and Kevin O'Connor.

I'm very proud of what Nikau Foundation has achieved so far. For a small team we are ambitious and passionate about making a difference to our communities and we are extremely excited about what the next year will bring.

Ngā mihi nui



Alice Montague
Executive Director

“
Increasingly, people are thinking strategically about their giving, and the community foundations model is proving to be a very attractive and effective solution in enabling them to meet their philanthropic goals.”



2019 philanthropy highlights



2019 grants

Supporting children to thrive. Barnardos

We are delighted to present the organisations we supported in 2019. We work with our donors to ensure their gift has the greatest impact – leveraging our knowledge and connections within the community.

Organisation name	Grant description	Amount (\$)	Fund
1st Karori Scouts	Capital expenditure costs to replace and upgrade camping equipment	9,900	Zac Pearson
Abigail Boyle	Support to attain her Professional Dancers' Postgraduate Teaching Certificate	7,000	Douglas
Agape Budgeting Service Limited	Salary support for two employees delivering free budgeting services	5,000	Tindall
Amberleigh Rose	Scholarship support for degree programme	5,000	Anonymous
Arohanui Strings	Programme costs for providing free music classes and an after-school youth orchestra	6,000	Milne
Arthritis New Zealand (Kaiponapona Aotearoa)	Salary support for a national co-ordinator for volunteer engagement	4,000	Wise
Asthma New Zealand Inc	Supporting costs for awareness-raising of asthma and chronic obstructive pulmonary disease	4,000	Coxon (Jessie, Elma & Adam)
Bacchus Theatre Trust	Operational costs supporting venue hire for their school holiday programme	999	Pegasus
Barnardos New Zealand	Salary support for a domestic violence programme helping children aged 5–18	4,000	Tennyson
BATS Theatre Limited	Operational support for the BATS Theatre programme	2,000	Bushell
Bedtime Stories from the Inside	Programme costs for monthly visits to Arohata Prison and Rimutaka Prison collecting stories	5,000	Tindall
Big Brothers Big Sisters	Programme costs to support recruitment of local volunteer mentors	5,000	Anonymous



Through the passion and generosity of the Nikau community and their unwavering commitment to the arts in New Zealand, we are able to bring new works to the stage, which challenge, inspire and engage audiences every year. ”

Rebecca Galloway
New Zealand Opera

Birthright Hutt Valley Inc	Programme costs to support volunteer engagement	5,000	Anonymous
Birthright New Zealand	Funding to research and map options to improve financial sustainability	10,000	Evans
Blind Low Vision NZ	Supporting specialist counselling services for people living with low vision or blindness	4,000	Wise
Blind Low Vision NZ	Guide dog services	400,000	Anonymous
Blind Low Vision NZ	General operating expenses	100,000	Anonymous
Cannons Creek Youth Charitable Trust	Salary support for a fundraiser for Cannons Creek and Naenae	10,000	Blake
Carterton Town and Country Development Group Inc	Operational support for an event to raise funds to help establish community gardens at Haumanu House	2,000	Carterton
Cathedral of the Sacred Heart	Capital expenditure to support earthquake strengthening	50,000	O'Connor
CCS Disability Action	Operational costs to support service delivery	5,500	Evans
Challenge 2000	Supporting costs for a leadership and personal development initiative	5,000	Anonymous
Chamber Music New Zealand	Operational costs providing educational support and materials	50,000	Judith Clark
Christ Church Cottage Museum Trust	Capital expenditure support to purchase and preserve a section adjacent to Christ Church	5,000	Coxon (Jessie, Elma & Adam)
Citizens Advice Bureau Wellington Inc	Operational costs supporting a free financial mentoring and budgeting service	3,000	Anonymous
Community Law Wellington and Hutt Valley Trust	Support to produce, translate and print information on refugee family reunification	8,500	Tindall
Community Networks Wairarapa Inc	Salary support for a co-ordinator to map social work provision across the region	3,500	Evans
Connecting Communities Wairarapa	Salary support for a cross-agency life skills support programme	3,000	Evans
Conservation Volunteers New Zealand	Operational costs to support 50 volunteer days delivering a community conservation project	10,000	Henderson
Crohn's and Colitis New Zealand Charitable Trust	Subsidised attendance at Camp Purple Live 2019 for children with Crohn's disease and colitis	5,000	Willows
Cross Roads Christian Community Trust	Capital expenditure support for the Freedom Life Residential Addictions Recovery Programme	5,000	Coxon (Jessie, Elma & Adam)
Drug-ARM Wellington Inc	Support of storage costs for their street van offering food, hot drinks and a listening ear	2,810	Coxon (Jessie, Elma & Adam)
English Language Partners New Zealand Trust (Hutt)	Programme costs including the recruitment of new volunteers to provide tutoring	2,000	Tindall
English Language Partners New Zealand Trust (Porirua)	Salary support for cultural and language assistants	5,000	Tindall
Epilepsy Association of New Zealand	Operational costs to deliver community support and education about epilepsy	4,000	Coxon (Jessie, Elma & Adam)
Fab Lab Masterton	Capital expenditure support providing community access to digital fabrication tools	2,500	Coxon (Elma)
Featherston Community Centre	Operational costs supporting the community centre and its activities	3,000	Evans
Foster Hope Charitable Trust	Operational support – backpacks for children entering foster care	5,000	Anonymous

“

Thanks to the generosity of people investing in their community foundation, every year we are able to help those whose vision cannot be corrected, giving them vital support, tools and technology to live their life without limits.”

Pam Baillie
Blind Low Vision NZ

Foureyes Foundation	Capital expenditure costs for optometry equipment to provide free eye exams for children	5,000	Wise
Friends of Baring Head Charitable Trust	Capital expenditure to purchase tools for the volunteer programme	1,100	Henderson
Friends of Old St Pauls	Capital expenditure support for earthquake strengthening	7,800	Friends of Old St Pauls
Fundraising Institute of NZ	Providing professional development and support for fundraisers working in the charitable sector	5,000	Evans
Grandparents raising Grandchildren	Programme costs for services	1,000	Anonymous
Greytown Music Group	Supporting costs to deliver the 2019 concert programme	600	Milne
Hoe Tonga Pacifica Waka Ama Association	Support to purchase waka ama paddles, life jackets and a paddle bag	3,400	Blake
House of Grace Trust Inc	Capital expenditure support to install skylights as part of the Warm Home project	3,488	Anonymous
Hutt Valley Youth Health Trust (operating as Vibe)	Salary support for a programme development co-ordinator delivering the Youth One Stop Shop	5,000	Tindall
Ignite Sport Trust	Support for a three-day resettlement programme for young refugees	8,000	Blake
Incredible Families	Programme costs to deliver free parenting courses – Incredible Years	5,000	Tindall
Institute of Registered Music Teachers of New Zealand	Annual grant for 2018/19 supporting the Institute of Registered Music Teachers	10,000	Clark
Ivan Barge	Supporting the making of a short film – Blue Smoke	1,000	Anonymous
John Melville	Supporting marketing and communications costs for the Judith Clark Fellowship	68 121	Judith Clark
Kāpiti Retirement Trust	Capital expenditure costs to build a second Shalom family suite Capital expenditure for 5,000L water tank	5,225 1,000	Wise Resilience
Kāpiti Summer School Charitable Trust	Operational costs to deliver Kāpiti Summer School	4,950	Nikau Kāpiti
Kāpiti US Marines Trust	Costs for a website upgrade and development project to increase volunteer opportunities	1,000	Bushell
Kāpiti Youth Employment Foundation	Operational costs for Work Ready Kāpiti – helping youth into employment	4,000	Coxon (Elma)
Karori Community Hall Trust	Capital expenditure support for the construction of new community halls	10,000	O'Connor
Karori Community Toy Library Inc	Support to collaborate with other social services including Plunket	5,500	Zac Pearson
Karori West Scout Group	Costs to attend Illuminate 2019 – a triennial event bringing together 1,000 youth	9,900	Zac Pearson
Kāpiti Youth Services One Stop Shop Trust	Salary support for He Kākano Early Intervention Programme	8,000	Kāpiti Enterprises
Kenakena School	Programme costs for 2019 dyslexia programme	5,000	Anonymous
LandSAR Wairarapa	Programme costs for training Wairarapa search and rescue volunteers	3,000	Zac Pearson
LandSAR Wellington	Capital expenditure to purchase equipment for Wellington search and rescue volunteers	7,000	Zac Pearson



Nurturing a love for the land at a young age. Common Unity

Makara Peak Mountain Bike Supporters Group	Capital expenditure to improve and conserve Zac's Track	19,800	Zac Pearson
Malaghan Institute of Medical Research	Summer scholarship to support research in Asthma and allergies	8,000	Wise
Maritime Heritage Trust of Wellington	Capital expenditure costs to refurbish the <i>Hikitia</i> floating crane heavy-lift ship	8,000	Evans
Mary Potter Hospice	Capital expenditure costs for a meal delivery hotbox and related equipment	4,000	Lyon
Moera Community House Inc	Contributing to innovative programmes and activities Supporting costs for volunteer engagement	3,000 4,000	Anonymous Anonymous
Mōkai Kāinga Māori Centre	Costs to increase reach and impact of support and advocacy services	5,000	Tindall
Mountains to Sea Wellington Trust	Capital expenditure for on-road costs to deliver programmes in east Wellington	10,000	Henderson
Multicultural Learning and Support Services Inc (MCLaSS)	Programme costs for MCLaSS database and CRM upgrade project (Stage 1)	1,500	Tindall
Muscular Dystrophy Association – Wairarapa branch	Salary support for Wairarapa community engagement activities	1,000	Wise
Nature Schools New Zealand	Salary support for the Bush Sprouts programme for children aged 4–10	1,800	Tennyson
Newtown Budgeting and Advocacy Service Inc	Salary support for comprehensive, wrap-around services	10,000	Tindall
Newtown Community and Cultural Centre 2009 Trust	Operational costs for the Wellington Timebank	5,000	Tindall
New Zealand Opera	Operational support to stage <i>La bohème</i>	2,000	Milne
New Zealand School of Dance	Programme costs to deliver the 2018 Graduation Season	4,000	Willscott



Ngā Manu Trust	Capital expenditure support for the kiwi nocturnal house	1,500	Anonymous
Ngatiawa Retreat Trust	Capital expenditure support for a replacement sewerage system	5,000	Coxon (Jessie, Elma & Adam)
Normandale Residents Association	Capital expenditure for 5,000L water tank for St Aidan's Church	1,000	Resilience
NZ Navigator Charitable Trust	Operational costs for NZ Navigator – a free online self-assessment for community groups	3,500	Evans
Olivia van Woerkom	Support to attain her Royal Academy of Dance Certificate in Ballet Teaching Studies	2,250	Douglas
Orders and Medals Society (Wellington branch)	Programme costs for the Orders and Medals Society 2018 Conference	1,000	Robb
Outerspaces Charitable Trust	Funding to support the Outerspaces co-ordinator role	5,000	Anonymous
Pae tū Mōkai o Taurira Inc	Research costs to explore sharing stories of local Māori along the Wairarapa Moana heritage cycle trail	2,500	Evans
Parent to Parent New Zealand Inc	Operational support for service and programme delivery	5,000	Anonymous
Perinatal Anxiety and Depression Aotearoa (PADA)	Salary support to deliver a fundraising event	3,500	Willscott
Porirua Foundation Inc	Programme delivery support	5,400	Evans
Rangatahi Tū Rangatira Carterton	Support to deliver a health and wellbeing programme – fostering resilience, compassion and self-care in young people	1,000	Carterton
RNZSPCA	Salary support for a part-time emergency management advisor	5,000	Evans
Samaritans of Wellington Inc	Operating costs and salary support for their telephone helpline	10,000	Willscott
Shakti Ethnic Women's Support Group (Wellington) Inc	Operational costs to provide emergency accommodation for migrant and refugee survivors of family violence	2,400	Robson
Sian Williams	Advertising costs for the Judith Clark Fellowship	120	Judith Clark
Skylight Trust	Salary support for a resource centre co-ordinator operating at their Resilience Hub	5,000	Willscott
Society of St Vincent de Paul (Wellington)	Operational costs to provide an annual interpreter to support clients	5,000	O'Connor
South Wairarapa District Council	Capital expenditure for 5,000L water tank for ANZAC Hall community hub	1,000	Resilience
Special Olympics Kāpiti	Supporting operational expenses	2,000	Anonymous
St Mark's Church Carterton	Operational costs for Seasons for Growth – an educational programme for children coping with separation, death and loss	1,000	Carterton
Sunshine Kindergarten	Capital expenditure costs to replace decking and ramp	4,000	Zac Pearson
Sustainability Trust	Operational costs to support Wellington Curtain Bank – keeping homes warm and healthy	1,700	Anonymous
Tawa School	Capital expenditure for 5,000L water tank	1,000	Resilience
Te Ara Korowai Inc	Operational costs to support arts and creativity at their wellbeing centre	4,000	Kāpiti Enterprises
Te Ara Moana Trust	Supporting sailing and kayaking programmes for children	5,000	Blake
Te Māori Cultural Centre Limited	Support for costs relating to emergency planning	2,000	Coxon (Elma)
Te Runanganui o te Atiawa ki te Upoko o te Ika a Maui Inc	Operational costs for the Iwi Panel working with minor offenders	6,000	Tindall
Te Whare Tiaki Wāhine Refuge	Salary support – kaiāwhina	2,400	Robson
The Cancer Society (Wairarapa)	Supporting costs for Woodworkers' Guild Wairarapa to produce 150 wig stands	1,500	Wise



We have learned, as a community, not only can we feed ourselves using the assets of our local region, we can respond to our needs with joy and equal participation. ”

Julia Milne
Common Unity

The Cancer Society (Wellington)	Programme costs to develop a motivational team-based walking website	4,000	Evans
The Catholic Foundation of the Archdiocese of Wellington	Catholic Foundation membership fee	5,000	O'Connor
The Common Unity Project	Salary support to deliver their Urban Kai farms programme	10,000	Tindall
The New Zealand Portrait Gallery Trust	Capital expenditure costs to install a point-of-sale system in the gallery shop	2,000	Bushell
The Neonatal Trust Wellington	Operational support for service delivery, educational materials and equipment	5,000	Anonymous
The Orpheus Choir of Wellington Inc	Salary support for young performers at the Carol of the Bells	1,300	Milne
The Salvation Army New Zealand Trust	Operational support for the community ministries programme providing crisis care and social services	4,000	Anonymous
The Salvation Army New Zealand Trust	Operational support for The Good Shop initiative	42,500	Anonymous
The Shift Foundation	Operational support to develop plans for growth and sustainability	5,000	Tindall
The Vincentian Foundation for the Elderly	Financial assistance to low-income elderly to assist with the costs of hearing aids	5,000	O'Connor
The Wellington City Mission (Anglican) Trust Board	Capital expenditure support – purchasing new laptops for the Mission for Youth programme Salary support for Mission for Families social worker	4,000 4,000	Anonymous Evans
The Whitireia Foundation	Scholarships for up to 12 students from Porirua	30,000	Porirua Fund
Timberlea Community House Trust	Capital expenditure for 5,000L water tank	1,000	Resilience
Trade School Industries Trust	Salary support for programmes – providing released prisoners with barista training	4,500	Coxon (Jessie, Elma & Adam)
Transition Town Ōtaki Trust	Capital expenditure to purchase a shipping container for the wood recycling project	4,995	Evans
Universities New Zealand Vice-Chancellors Committee	Administration costs PhD research support for Jake Church's project in multicultural collaborative practices Judith Clark Memorial Fellowship awards to Anna Cooper and Modi Deng	1,725 5,000 6,636	Judith Clark
Upper Hutt Community Youth Trust	Salary support for a youth worker	5,000	Anonymous
Upper Hutt Women's Centre Inc	Operational costs to provide wrap-around social services	5,000	Tindall
Vincent's Art Workshop	Salary support for staff to provide art therapy to people struggling with mental health issues	5,000	Evans
Volunteer Wellington	Salary support for a fundraiser	15,000	Evans
Vulnerable Support Charitable Trust	Operational support for Take 10	4,500	Blake
Well-Able	Costs to develop a sustainability plan for the Well-Able Disability Centre	4,000	Kāpiti Enterprises
WELLfed	Operational costs to support the continuity and growth of the programme	5,000	Tindall
Wellington Access Broadcasting Society Inc	Salary support for the community liaison/programme development team	5,720	Coxon (Jessie, Elma & Adam)
Wellington Camera Base Volunteers	Supporting costs for volunteers delivering the project	990	Coxon (Elma)



Supporting those with sight loss to live a life without limits. Blind Low Vision NZ

Wellington Early Intervention Trust	Salary support for a music therapist	5,000	Anonymous
Wellington Free Ambulance	Capital expenditure support to purchase a video laryngoscope for better patient care	4,200	O'Connor
Wellington Holocaust Research and Education Centre Inc	Translating Anne Frank's diary into te reo Māori	1,000	Anonymous
Wellington Homeless Women's Trust	Operational costs providing support and accommodation to homeless women	5,000	Tindall
Wellington Mountain Bike Club	Capital expenditure costs to develop a track for children at Miramar Track	7,000	Henderson
Wellington Multiple Sclerosis Society	Salary support for the Wairarapa field worker	4,000	Wise
Wellington Museums Trust Inc	Subsidised bus transport and ticket packages for the 2019 Capital E National Arts Festival	2,000	Coxon (Elma)
Wellington Night Shelter	Operational costs for the Night Shelter providing crisis and transitional housing	5,000	Tindall
Wellington Treasure Trust	Programme costs for the 2018 LitCrawl Festival	5,000	Pegasus
Wellington Women's Refuge	Costs for staff training including First Aid, Te Pumaomao and Looking at Grief workshop	2,699	Tindall
Wellington Youth Orchestra Inc	Salary support for an administrator and guest conductors	2,400	Savage
Wellington Zoo Trust	Salary support for reptile keepers running the green gecko breeding programme	4,000	Evans
Wesley Wellington Mission Inc t/a Wesley Community Action	Support for the operational costs of the Porirua Timebank	4,000	Coxon (Jessie, Elma & Adam)
Whale Song Charitable Trust	Programme costs for a public sculpture and community education project	1,000	Bushell
ZEAL Education Trust (Kāpiti)	Salary support for youth worker	4,000	Tindall
Total distribution		\$1,322,896	

Total distribution breakdown:

Nikau endowment grants (including anonymous Nikau funds)	\$450,977
Anonymous grants	\$611,000
Tindall Foundation grants	\$104,699
Perpetual Guardian grants	\$156,220
Total distribution	\$1,322,896



An intergenerational fund

Giving together, forever – Chris Milne with his children Lucy and Angus

Lucy and Angus Milne were just kids when their community-minded grandmother Barbara established a fund supporting local causes.

Now, 16 years on, the Milne siblings are themselves involved with the Barbara Milne Fund, continuing her legacy of supporting local arts, environmental and conservation causes.

Change maker

Barbara Milne did not sit around waiting for things to happen. She made things happen.

If an organisation close to her heart needed support, she'd be there volunteering. If a cause she believed in needed fighting for, she was on the front line.

The importance of active community involvement was instilled in her children when they were young.

“My mother had me out collecting signatures for Save Manapouri – a campaign to prevent raising the lake levels – when I was only 10,” says son and Nikau Foundation Chair Chris Milne.

Barbara's influence stretched down to the next generation too. “She always encouraged us to be our best selves and pushed us to do better,” says Lucy Milne.

Funding into the future

Throughout her life, the keen pianist and conservationist was involved with organisations supporting musical, environmental and conservation causes including the Hutt Valley Riding for the Disabled, which she helped set up, Forest and Bird and funding for two Steinway pianos for public use in Upper and Lower Hutt.

Barbara, whose own parents were equally active in their community, showed her support for organisations both practically through her voluntary work and financially. In 2003, she set up the Barbara Milne Fund to make sure that financial support would continue into the future.

Four years after Barbara passed away, Chris transferred his mother's fund to Nikau Foundation – he saw it as a good fit for the Milne family.

“It was a deliberate act on my mother's part to create something enduring,” says Chris.

“For me, the idea of forever funding was what really attracted me to Nikau. Every dollar that gets given to the Foundation stays there forever, and only the income gets given out.”

“One of the things I've been doing is adding to the fund every year, and I've said to Lucy, Angus and George, that when the time is right, they can do the same. I think that is something good to aspire to – I see it as an intergenerational family fund.”

While Chris and his children are involved in identifying where income from the fund is best spent, the Nikau Foundation model means the fund will continue forever, even if the future generations

“It was a deliberate act on my mother's part to create something enduring. I see it as an intergenerational family fund.”

Chris Milne



“For me, the idea of forever funding was what really attracted me to Nikau. Every dollar that gets given to the Foundation stays there forever, and only the income gets given out.”

Chris Milne



Barbara with her granddaughter, Anna

are not so hands-on in the decision-making process.

“The good thing is, because the fund is with Nikau, we know it doesn’t depend on us. So, it will always be there, still working and doing its good things,” says Chris.

A funding legacy

Today, the Barbara Milne Fund supports a range of arts organisations such as the New Zealand Symphony Orchestra and Hutt Valley-based Arohanui Strings providing free music lessons for children. Donations are also made to environmental and conservation-focused organisations such as Ngā Manu Nature Reserve.

Lucy says it’s inspiring to see the impact that grants from her grandmother’s fund can have on organisations.

“Our family really loves Ngā Manu Nature Reserve. In Nikau’s most recent grants round, Barbara’s fund gave \$1,000 to pay for a projector, which helps them deliver public talks, workshops and conferences.”

Memories of an active grandmother

Angus says being involved with his grandmother’s fund is a wonderful way to remember her.

“It’s really great that the fund will keep supporting the things that Granny saw

to be important in the community – that it will keep going, keep contributing.”

And Lucy says Barbara would be thrilled with the income that her fund is generating and is being passed on to the local community in which she was so actively involved.



Game-changing funding

For 24 years, Vibe has provided young people with an ever-growing range of programmes and health and wellbeing services. Resilience building and a strong youth voice lie at the heart of Vibe's work.

A one-stop shop

Under one roof, through one door – that's been Vibe's guiding principle since it opened to Hutt Valley youth in 1996, says General Manager Bridget Roche.

"Vibe is a one-stop shop, and that means you have a range of services and support programmes under one roof, through one door. Young people only have one point of entry, so ideally they're not having to tell their story multiple times, and there's an ease to accessing services."

Bridget says, over time, the changing needs of young people has seen Vibe tip towards providing services for high-end/high-needs young people.

It's a crucial part of what they do, but not Vibe's only purpose. She says light-touch engagement through resilience-building programmes are essential in meeting the wellbeing needs of young people.

What's also really important, says Bridget, is having the resources and space to think about, develop and maintain these light-touch programmes.

"We need to think creatively about how we sustain our programmes. We apply for funding from organisations like Nikau Foundation to innovate, be creative and provide what I still believe are some of our core services in regard to youth development programmes."

Building resilience and a strong youth voice

A \$5,000 Nikau Foundation grant meant Programme Development Co-ordinator Sahra could dedicate time to a work readiness programme and a peer support programme, run over a week, helping young people identify their own skills and learn what it is to be a leader in their communities.

With many organisations contacting Vibe for a youth voice on issues, having integrity around how the organisation responds to requests is crucial. A third programme supported by the Nikau

Foundation grant focused on developing that young voice through a Youth Advisory Group (YAG).

"It's been quite a long-term group but it probably hasn't had the time and space to make it something that, number one, is really fulfilling for the young people involved and, number two, is strengthening and meeting Vibe's aspiration to be the place that's hearing the voices of young people."

Game-changing funding

Understanding the best way to develop the group meant investing time and resources to be able to listen to and act on YAG's ideas. And that, says Bridget, is what the Nikau Foundation grant allowed them to do.

"I feel really excited about the work we've been doing in this space. We've taken some time to say youth participation is really important to us, but what does that look like? We've done some work as a

staff, taken that thinking and given it to our YAG members and said this is what we're wondering, and they've worked with us and said yep, that's great, and we think this and we think that."

"We've decided that our first step is to really strengthen the group. We hope to ensure young people can influence Vibe services at all levels from our trustees to management as well as day-to-day relationships with our staff."

Because of the support from the philanthropic sector these programmes are effective and far-reaching.

"If we just have a little bit of time and space to think and do this work now, the ripple effects are significant. What I love about the philanthropic sector and places like Nikau is that they see this little piece of work that needs to be done and they are like 'we can support that'. And that is a game-changer."



Driving better services – by young people, for young people. Vibe

Making classical concerts affordable

Musicians from around the globe performed six chamber music concerts organised by the Greytown Music Group. Funding from Nikau Foundation helped keep ticket prices low so cost was no barrier for Wairarapa residents.

Breaking down barriers

All too often, classical concerts and hefty ticket prices go hand in hand. To make sure Wairarapa residents have access to affordable, world-class performances, Greytown Music Group's Juliet and Ed Cooke have been organising chamber music concerts where cost is not a prohibitive factor.

"We provide high-quality concerts for the people of Wairarapa at reasonable cost," says Juliet.

"Most of our audience members are elderly people, many on very limited incomes, and they enjoy being able to attend our concerts in their local area rather than having to drive over the Remutaka Hill to attend concerts at additional stress and cost."

To get the younger audience involved, Juliet and Ed have a policy that young children come free to encourage parents to bring the kids along, while adults pay \$25 and students \$10.

Since 1977, Juliet and Ed have organised over 216 concert programmes, with most performances held in their Greytown home.

"People like the friendly and informal atmosphere that enables audience members and players to mingle afterwards," says Juliet.

"The musicians perform chamber music in our 'chamber' – our living room – so the concerts are quite intimate, with the front row of the audience within an arm's reach of the players."

Keen concert goers

Over 580 people who enjoyed the concerts held between April and September 2019 weren't at all put off by some pretty damp, cold weather, with five of the six performances selling out. New Zealand violinists and Serbian cellists were among the soloists, trios and ensembles performing for these hardy Wairarapa folk.

Nikau funding covering costs

Grants from organisations like Nikau Foundation help Greytown Music Group continue to run its popular concert series and, importantly, attract world-class musicians from here and overseas.

"We try and obtain grants that will cover our operating expenses so that we can

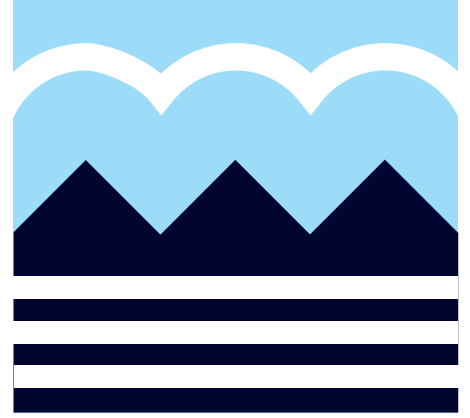
give the entire audience takings to the performers. The grant from Nikau amounted to nearly a quarter of our expenses."

Performing in April, Trio Pohadka and Friends – Doctors with Instruments in turn donated \$2,605 they received from ticket and CD sales to the Cancer Society.



Inspiring a love for classical music across Wairarapa. Juliet and Ed Cooke, Greytown Music Group. Image courtesy of Stuff.co.nz

Our community – Wairarapa



With a growing economy and a population set to rise by 20% in the next 20 years, it is no surprise that many of the grants distributed this year are supporting community development – building capability, enhancing health and wellbeing and growing connectedness.

The benefit of giving to Nikau Foundation is that it's your gift, your say. Some of our donors choose to remain anonymous. However, the impact that their giving has is an important part of our story. We are delighted to be continuing to work with local donors who have chosen to support an undergraduate scholarship for a worthy candidate from Wairarapa. For many young people, the prospect of university is both exciting and challenging, with many juggling their studies with work to support themselves. Being awarded a scholarship enables a student to focus 100% of their energy on their studies – ensuring they have the best start to their degree.

As we look to the year ahead, we want to continue enriching our engagement with our network of stakeholders and

encourage more people to support the Wairarapa Fund. We have set ourselves an ambitious target of raising \$50,000 by encouraging people to make a small, regular gift to support the region they love. From health and wellbeing, life skills and youth development to arts, culture and heritage, every sector makes a direct contribution to the growth, vibrancy and sustainability of our region.

My sincerest thanks go to our team of passionate and committed volunteers for all their hard work this year. I'd also like to acknowledge our wonderful donors and partner organisations. You are a vital part of our story and our growing Nikau family. Thank you.

Lucy McLaren



Our volunteers

- Lucy McLaren** (Chair)
- Barbara Durbin**
- Bevan Morland**
- Bob Francis** (Champion)
- Darrin Goulding**
- Peter McNeur**
- Sally Adams**



Battling the extremes to save lives.
LandSAR (Wairarapa)

Cloak of support

The English translation of Te Ara Korowai is ‘embrace the path with the cloak of support’. For seven years, the Raumati-based organisation has provided that cloak to people seeking a place to heal and feel they belong.

Art works

Art and creativity can have huge benefits for people facing mental health challenges. But it’s in the ‘doing’ rather than in the final artwork where you see the biggest impact, says Te Ara Korowai Manager Shona McNeil.

Shona says Te Ara Korowai provides a sense of belonging, and being a peer-led organisation, people using its services know somebody ‘gets’ them without having to tell their story.

“That’s why it’s important to have people who have lived these experiences themselves working and volunteering here. They are a big part of the family because they walk the talk.”

Ripple effect

Since it was established in 2012, Te Ara Korowai has been providing creative workshops and training for tangata whai ora – people seeking wellness, mainly from mental distress.

The organisation has become a community hub, offering support and a sense of belonging to the people coming through its doors.

“If you don’t get help, if you don’t feel there’s a place that recognises you as a person – a human being, not a human ‘doing’ – you could end up at the crisis point.”

The work being done by Te Ara Korowai is having a positive ripple effect, felt throughout its wider community, says Shona.

“We won a highly commended award this year through the Arts Access Holdsworth Award for decreasing stigma and discrimination around mental health issues.”



Providing people with a sense of wellbeing and belonging. Te Ara Korowai

Funding = opportunities

A Nikau Foundation grant helped fund five weeks of extended hours and extra workshops – including one in which members made 500 shell ANZAC poppies. These beautiful pieces of art were displayed beside Raumati Road for the whole community to enjoy.

The grant also paid for a popular Wacky Wednesday programme in which young people with intellectual disabilities had a lot of fun making dreamcatchers.

“This was very much a process rather than a product activity. They loved having a space where they could just throw paint around and have a laugh,” says Shona.

The third project, a pilot outreach programme called Arts to You, offered art workshops in people’s homes.

“We are aware that leaving your home if you are facing serious mental distress is a big challenge, so we thought maybe there’s a need for a bridge for more people to access services.”

Caring communities

“The long-term goal is to offer more services and outreach programmes from Te Ara Korowai’s Raumati base,” says Shona.

“We would like to be open five days a week, to continue our collaboration with other support organisations and really build a community that cares.”

“It’s about the process rather than the product. It’s the conversations that happen over the creative tables that save lives.”

Shona McNeil
Te Ara Korowai

Our community – Kāpiti

Kāpiti Coast is a vibrant region with an ever-growing and more diverse population. With this changing demographic and our rich natural heritage, never has it been more important to ensure our communities have what they need to thrive.

Our commitment to growing the Kāpiti Fund will enable us to continue to deliver transformational change across the region. We have been inspired by the generosity of our supporters and humbled by more and more people choosing to invest in the community foundation model. A donation to the Kāpiti Fund won't just support vital community initiatives today but also in the future. Through environmental conservation, community development and child and family wellbeing, we can continue to adapt and respond to our community's greatest needs.

A highlight of the year was Cabinet Minister and MP for Mana, the Hon Kris Faafoi officially opening the Shalom end-of-life suite at Kāpiti Retirement Trust's Sevenoaks Lodge. With support from the Kāpiti Fund, the suite provides family members and friends with a safe, warm

and friendly environment, accessible around the clock, so they can spend time with their loved ones in their final days and weeks.

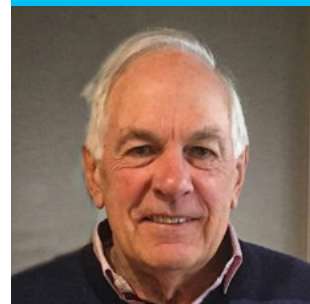
Our aim this year and next will be to continue to grow our reach and create more opportunities to engage with the Kāpiti community. We are delighted to be continuing our partnership with the Electra Business Awards – recognising local businesses who are making a difference on their doorstep through our Give Where You Live award.

I would like to thank our supporters for their ongoing generosity. My sincerest thanks also go to our team of volunteers who give their time, skills and community knowledge to help us grow our impact year on year. I greatly look forward to working with you this year.

Mike Olsen

Our volunteers

- Mike Olsen** (Chair)
- Adrienne Bushell**
- Jane Mortimer**
- Jennie Langley**
- Liz Koh**
- Richard Mansell**
- Rod Lingard**
- Shirley Clarke**
- Tim Burns**



“ZEAL is a space that allows me to be weird and wild without judgement, and I’ve completely fallen in love with it all. It has taught me how important it is for all young people to feel like they belong and have a voice.”

Aaliyah
aged 13



Dedicated to enabling young people to discover, express and develop their unique creativity. ZEAL

The business of giving back

Porirua resident Chris Kirk-Burnnand has a head for business, a love for his community and a commitment to helping young people thrive. This year, Chris and wife Helen established a Nikau fund so their support for their community will continue long into the future.

Business and community

Business is in Chris Kirk-Burnnand's bones. At 15 years old, he was running a circular distribution business while still at school. After a stint at university, he dropped out to start what became a wide-ranging and very successful career in business.

The day job was important but so was being active participants in their north Wellington community. In 1987, Chris and Helen established the Johnsonville Youth Grants trust and they have been involved in and supported the Life Education Trust (LET), both at a local and national level and the Whitireia Foundation.

It also included the Porirua Youth Awards – an organisation rewarding young people for effort and success in arts and culture, education, environment and community work, and sport. It will be the beneficiary of the Kirk-Burnnand Family Fund.

"It's a way for us to recognise that we've lived in Porirua for nearly 43 years, and it really is our home. We love the community there and I suppose that's really why we are doing it."

A practical and efficient way of giving

For a man with a sound business head on his shoulders, giving through Nikau Foundation made sense.

"It's a good way to do it because we don't have to manage annual returns from the trust. We don't really have to run it at all because that's what Nikau is doing. We're saying we want the money to go there. We may well support how it goes there, but it takes the responsibility of running a trust and the effort that comes with it away from us, and I think that's beneficial. I'm really keen on that."

"You've got to have a love of community, and now that I'm a grandparent, a lot of the things I'm doing are really about looking at how we develop a society and an attitude in the community that I want my grandchildren to grow up in."

Chris Kirk-Burnnand

Supporting young people

Chris and Helen's philanthropic focus has been on supporting organisations helping young people develop life and leadership skills, allowing them to thrive and participate in their communities.

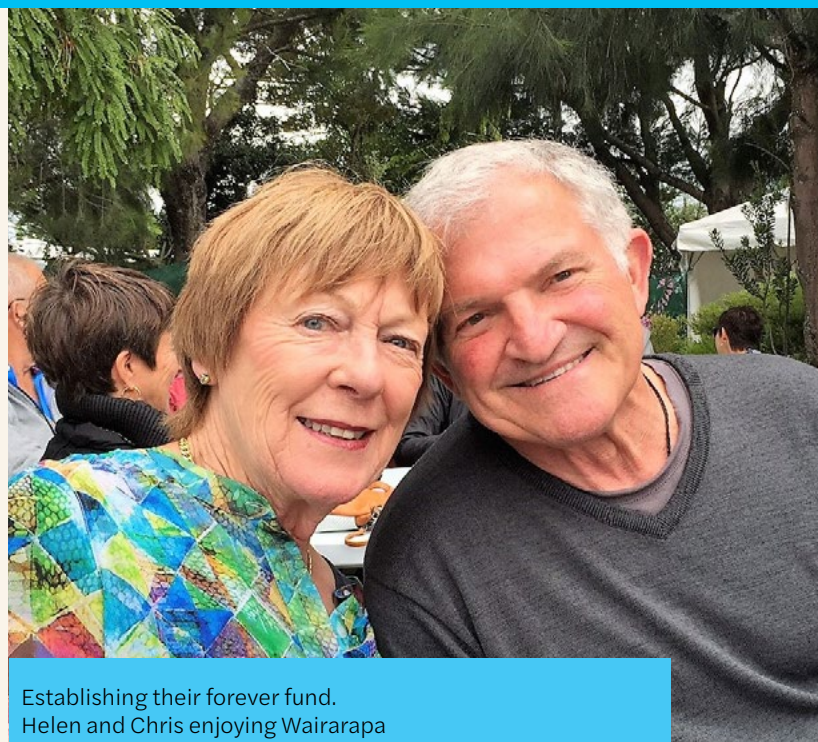
"Children are really precious, and you've got to give them a good start in life. The Porirua Youth Awards are really recognising the importance of rewarding young people for trying hard and for success."

Establishing a forever fund with Nikau

This year, Chris and Helen decided to add a new string to their philanthropic bow when they set up their Nikau fund.

The idea of a forever fund was appealing.

"We do a lot of direct funding. The difference with Nikau is that we're putting money into a fund that will be going when we're long gone and still doing some good in the community."



Establishing their forever fund.
Helen and Chris enjoying Wairarapa

Our community – Porirua

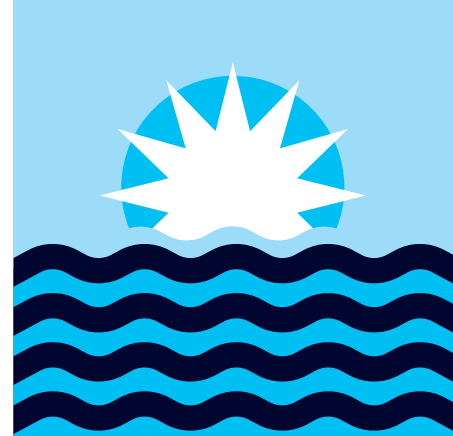
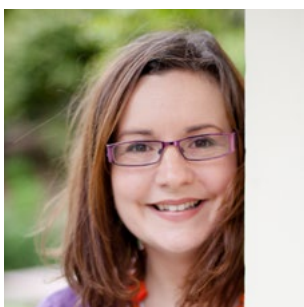
Porirua has a large and ever-growing youth population. We want to harness this creativity, innovation and energy for the benefit and growth of our community. It is vital that we support long-term, sustainable and impactful initiatives that will contribute to future generations.

The Porirua Fund is an incredible asset for the city. Established through a significant trust transfer in October 2018, our team of committed volunteers are collaborating with the Nikau team to ensure that our grant-making is strategic, informed and sustainable. Our team were carefully selected for their skills, experience and community connectedness. Porirua is an ethnically diverse, inclusive city and we are reflective of this – bringing together voices from local government and business, community leaders, youth, Māori and Pasifika communities.

The Nikau Foundation grants round closed at the end of August 2019. The Porirua Fund attracted 70 applications from local groups and charities. It was humbling for us to learn more about the innovative solutions being driven by the community. We are looking forward to connecting our wider Nikau family with some of the local organisations we are supporting.

Our aim for 2020 is to streamline our processes, increase our impact and grow our network. We have tasked ourselves with growing the Porirua Fund so we can support our community's needs, now and in the future.

Rebecca Morahan



Our volunteers

Rebecca Morahan (Chair)
Eleanor Cater
Izzy Ford
Jess Reiher
Numalani Fonoti
Ranei Wineera-Parai
Sue Shotter
Tim Sheppard



Empowering youth to be the best they can be. Billy Graham Youth Foundation



Growing generosity across the region

Cultivating creativity.
Verb Wellington

Vanessa Rushton Photography

Nikau Foundation builds long-term reliable funding streams for our communities by investing and growing the donations we receive. Our supporters give through us in the knowledge that their gift will go further forever.

We have been overwhelmed by the generosity of our supporters. Our Nikau family has grown significantly this year, and we are delighted to share the stories of the new funds that have been established.

The Freeman Fund

Honouring the rich life of Teresa Freeman, this fund has been established to support organisations driving better medical and health initiatives across our region. True to Teresa's wishes, priority will be given to supporting Leukaemia & Blood Cancer New Zealand and Blind Low Vision NZ to support in the training of guide dogs.

Kirk-Burnnand Family Fund

Passionate Wellingtonians, Chris and Helen Kirk-Burnnand want to help every person fulfil their potential, no matter their background. The fund will support youth development and youth leadership.

The Jocelyn Vogel Fund

Jocelyn's family history is deeply rooted in Wellington. The fund was passed to Nikau Foundation to manage – ensuring the greatest impact within the community. True to Jocelyn's wishes,

grants will support those facing hardship and disadvantage and the advancement of education and religion in the place she lived and loved – Lower Hutt.

The Leseberg Fund

Lore Leseberg is passionate about protecting our native flora and fauna so that future generations can continue to enjoy, learn from and be inspired by nature. Grants will support Forest and Bird and vital conservation and environmental projects across our region.

Main Dickinson-Smith Family Fund

Committed to supporting the wellbeing of our region, grants will support some of the most pressing, innovative and impactful initiatives within the environment, culture and recreation, health and education.

Porirua Fund

Driving long-term funding for the city, support will go to local groups and organisations committed to delivering positive social change across all sectors - education, employment, housing, health and disabilities, arts and culture, sport and the environment.

“We simply can’t run a festival of this breadth without help. The Nikau Foundation’s continued support of Verb Wellington means we can continue to create a world-class writers’ festival right here in the city.”

Claire Mabey
Verb Wellington

We would also like to thank the donors who have established funds this year but have chosen to remain anonymous.

Nurturing a culture of philanthropy



Supporting healthy and happy families. Barnardos

We simply couldn't do what we do without the support of generous individuals and families. Since 1991, people have believed in our model and invested in us. These are the acts of kindness that are growing and giving support to our communities now and in the future.

- Al and Alison Rowland Fund**
Supporting the advancement of arts and culture.
- Barbara Milne Fund***
Continuing her legacy, Barbara's fund supports local arts, environmental and conservation causes.
- Caroline Boyd Memorial Fund**
Established in 2017 to support the advancement of youth, women and community development – areas Caroline was extremely passionate about.
- Carterton District Fund**
Supporting the community to thrive through health and wellbeing, community development and funding for where the need is greatest.
- Chris Thomas Fund***
Committed to the ecological and environmental conservation of our local region.
- Elizabeth Rose Fund***
Supporting our region's arts and heritage, health and wellbeing.

- Elma Coxon Fund**
Established in 2017 to honour the rich life of Elma – supporting youth, education and the arts.
- Fagerstrom Fund***
Supporting our region's health and wellbeing through research and programmes.
- Kevin and Julia O'Connor Fund***
Committed to supporting the work of the Roman Catholic Church and the health and wellbeing of our communities.
- Laurie Bushell Fund***
Established in 2007 to honour the life of Laurie – cultivating our creative capital with a particular focus on supporting music and fine arts.
- Leslie Austin Fund***
Committed to enhancing the performing arts across our region.
- Mike and Margaret Olsen Fund**
Dedicated to supporting youth development, leadership and management skills.

- O'Dea Illingworth Fund***
Committed to preventing climate change through research.
- Pegasus Fund**
Supporting a wide range of priorities across our communities – arts and culture, environment and conservation, education, youth and animal welfare.
- Robson Family Fund**
Enabling our region to thrive – with a focus on supporting youth, sport, health and wellbeing, medical research and the arts.
- Rosemary Gray Fund**
Established to respond to where the greatest needs lie in the Wellington community.
- The Alistair Robb Numismatics Fund***
Nurturing ongoing scholarly debate and research on coins, bank notes, medals and tokens.
- The Bice Tennyson Fund**
Supporting young children facing hardship and disadvantage and the protection of our natural habitat.

The Bertaud-Gandar Fund

Established to support scholarships for young people particularly Māori and Pasifika. Grants will also support literacy, numeracy and life skills programmes.

The Blake Fund

Providing support for our young people – with a focus on women, Māori, Pasifika, migrants and rainbow communities.

The Francis and Dianne Small Fund*

Committed to the social wellbeing of Wellington – supporting health, education, and those facing financial hardship.

The James C Draper Fund*

Supporting organisations driving medical research, social services and animal welfare.

The Jenny and Ross Hanna Fund*

Established to enable our region to flourish – supporting the advancement of health and the arts.

The Jessie, Elma, Adam Coxon Fund*

Aiming to address the most pressing issues facing our community with a focus on education, religion and health, and supporting those facing financial hardship.

The Judith Clark Memorial Fund

In honour of a much-loved teacher whose influence continues to reach generations of New Zealand pianists – funds support the education of young musicians and music teachers.

The Kāpiti Community Enterprises Fund

Supporting those living with an intellectual disability or struggling with mental health issues to find meaningful employment or engage in further education so they can contribute to their community.

The Liliās and Johnny Bell Fund*

Established to support dance, female leadership, faith communities, youth development and parenting skills.

The Max Koh Fund for Meow Meows

Established as a bequest to support areas that Max is most passionate about – animal and women's welfare.

The Willows Fund*

Supporting initiatives for children living with Chron's disease and colitis, animal welfare and the environment.

The Zac Pearson Fund*

Established in 2015, Zac wished to support the people and places he cared about most – funding youth initiatives, health and wellbeing, Makara Peak and social services.

Tomiki Fund

Supporting the martial art of Aikido, with a focus on those practising Shodokan or Tomiki, and providing funding to secure the future of our region's dojos.

Warren Douglas Scholarship Fund

Supporting the training of those wishing to transition from performer to arts management.

Wellington Savage Fund*

Nurturing the next generation of classical musicians in Wellington city – focus on training and providing access to perform publicly as part of an orchestra.

Willscott Fund

Managed by Nikau since 2008, grants from this fund support the arts and social services.

We would also like to thank those who wish that their funds remain anonymous

Our community connectedness and collaborative approach means that many organisations choose to partner with us to ensure that their grant-making is strategic and delivers impact. For many years, we have partnered with Perpetual Guardian and acknowledge the generosity of the following donors.

Eileen Ryan Cats Trust*

Established by local philanthropist and cat lover to support the protection of cats.

Henderson Conservation Trust

Grace Mary Henderson was committed to ensuring that future generations could enjoy local reserves and open spaces in Wellington – securing parks and playgrounds to be enjoyed by young and old.

Henry and Eileen Wise Medical Trust*

Committed to advancing health for the benefit of our communities.

Richard and Doreen Evans Charitable Trust*

Supporting our community's greatest needs – with a focus on those facing financial hardship, health and the advancement of education and religion.

Robert and Kathleen Lyon Charitable Trust*

Supporting palliative care services for the region.



Any gift, large or small, can make a lasting difference. By giving through Nikau Foundation, you can support the people and places you love the most. We would like to thank those who have chosen to make a gift to these funds, enabling us to respond to where the needs are greatest.

Arts, Culture and Heritage

Animal Welfare

Children and Families

Disability

Education

Elderly

Environment and Conservation

Health and Medical Research

Housing and Homeless

Nikau Fund

Nikau Kāpiti Fund

Nikau Wairarapa Fund

Mental Health

Sport and Recreation

Technology and Innovation

Wellington Resilience

Youth

*Indicates funds where donors have named organisations they wish to support annually

Partners in the funding long-game



Presenting challenging, inspiring and engaging art. City Gallery visitors experiencing Earthworks from Semiconductor: The Technological Sublime

The question:

What's the best way for a significant bequest to have real long-term impact?

The answer:

Partner with Nikau Foundation to establish a fund generating support for some of Wellington's most iconic sites.

A new direction

Extraordinary, beautiful and challenging art, cultural and science experiences can be found all around the capital, and Experience Wellington is there to make sure Wellingtonians and visitors get to enjoy it all.

The 24-year-old organisation runs visitor experiences including Wellington Museum, Space Place at Carter Observatory and City Gallery. This year, income from the sale of a painting bequeathed to City Gallery by renowned New Zealand ballet dancer Sir Alexander Grant was used to establish the Experience Wellington Fund.

"It was a step in the right direction," says Experience Wellington Chief Executive Pat Stuart, and one taken very carefully.

"We had a very long debate about whether we would spend the bequest, display it or invest it and use its proceeds for activities at the City Gallery. Eventually, we decided that's what we wanted to do."

Then, says Pat, came the matter of how to invest.

"We discussed managing the funds ourselves or whether it was better to go with an organisation like Nikau and get value from the fact that it is managing funds, therefore generating more revenue. That was what we decided to do."

Like-minded partners

"Establishing the fund with a like-minded organisation was important," says Pat.

"Nikau is community-focused. It was a perfect fit for what we wanted to achieve. Partnering with Nikau enables us to leverage their connectedness, and build a network of relationships with organisations across the community that hold similar values and aspirations. The relationship between Experience Wellington and the Foundation is an important one, and we certainly want to make sure it grows and strengthens over time."

A gift to the city

In honour of Sir Alexander's passion for nurturing Wellington's cultural richness, income will support City Gallery in bringing international exhibitions and lecture series to the capital. It will also provide forever funding for the wider arts, culture and science institutions managed by Experience Wellington.

While supporting City Gallery, the fund has been structured so future donors have options. They can support children's and young people's participation in the arts, or they could say "I'm really fascinated with space science, and I want the money to go there."

Ambitious plans

Experience Wellington receives generous support from Wellington City Council, but there is still a lot of fundraising to do, says Pat. "We're aiming to raise at least 35–40% of the revenue we need to operate, which is a significant proportion."

It's a big job. A lot of work is focused on strengthening Experience Wellington's fundraising strategy, and Pat thinks partnering with Nikau Foundation has real profile-raising potential.

"They are out there talking with people and promoting funds and offering opportunities. It means we've got Nikau working on our behalf."

The long game

The decision to work with the Foundation means Experience Wellington is taking a long-game approach with donations to the fund. Pat says this gives a permanency to the original bequest at the heart of the Experience Wellington Fund and future donations.

"I would hope that, within 50 years' time, the fund will have grown significantly. In turn, the income that it is generating would have also increased, meaning people can see the benefit of having the fund."

Pat believes the idea of a forever fund will appeal to Wellingtonians wanting to leave meaningful bequests that have an impact well into the future.

"The point about this is that pledges are future-focused – it's a long-game opportunity."



Securing a brighter region through partnerships

Securing our natural heritage for future generations. Wellington Botanic Garden

Nikau Foundation is committed to ensuring the places we hold dear in our hearts are preserved for future generations. We would like to thank the organisations who have chosen to partner with us this year, working together to support a rich and vibrant region.

Experience Wellington Fund

Nikau Foundation is delighted to be partnering with Experience Wellington to secure some of Wellington’s most iconic cultural sites. The fund will become a lasting legacy ensuring future generations can access, learn and be inspired by Wellington Museum, Space Place at Carter Observatory, Capital E, City Gallery and many more.

Friends of the Wellington Botanic Garden Fund

The Friends of Wellington Botanic Garden support the delivery of an annual programme of events, lectures and workshops designed to deepen the engagement of the community with the Garden. Celebrating 150 years since the Garden’s establishment and determined to secure its cultural richness, the Friends have established the fund to ensure future generations can enjoy this important heritage site.

The Wharekaka Fund

Located in the heart of Wairarapa, the Wharekaka Rest Home provides professional and nurturing care for the elderly. Promoting independent living, this values-driven home supports

residents to thrive in a warm, friendly and loving environment. In partnership with Nikau Foundation, the fund will support the future sustainability of the home.

We would also like to thank those that continue to partner with us:

Chilton Old Girls’ Association Fund

Supporting the development of and student experience at Chilton Saint James School.

Ngā Manu Fund

Establishing a lasting legacy for the conservation and preservation of our native flora and fauna.

The Friends of Old St Paul’s Fund 2015

Supporting this historic Wellington landmark – now and into the future.

The National Collective of Independent Women’s Refuges Fund

Ensuring critical support services, programmes and refuges for women and children experiencing family violence.

Wairarapa Nurses and Midwives Educational Fund

Providing scholarships for the development of professionals located in the Wairarapa region.

Wellington Youth Cricket Development Fund

Committed to supporting young people to realise their potential in cricket across the Wellington region.



Inspiring young minds. Capital E

Image courtesy of Justine Hall

Corporate trusteeship

Michael and Suzanne Borrin Foundation

The Borrin Foundation is an example of how an act of generosity by a Wellingtonian can leave a lasting and substantial legacy for our communities.

Established through a \$38 million bequest by the late Judge Ian Borrin, the Borrin Foundation provides critical support for legal research, education and scholarships. It was founded in memory of Ian's parents, Michael and Suzanne, who were Jewish and Polish immigrants to Wellington in the 1930s. This generous gift reflects the Borrin family's deep gratitude and commitment to New Zealand, Ian's love of the law and his conviction that law provides an essential foundation for a flourishing society.

Ian's vision was for a fund to research legal issues where there was potential to make a real and practical difference to the lives of New Zealanders. As part of his legacy, he appointed Nikau Foundation as corporate trustee.

For much of the year, there has been a continued focus on areas of profound concern for our country – areas where the law is not serving New Zealanders well. Many of the projects supported have aimed to address criminal justice reform, family law, consumer credit law, Indigenous law and the environment.

Reframing crime and justice: A project that has been designed to address how we talk about criminal justice reform in Aotearoa New Zealand. It includes research and training to ensure an evidence-informed public discussion. This work is being led by JustSpeak and The Workshop.

He Ture Kia Tika: 'Let the law be right' for people experiencing mental distress and addiction. Research shows that the majority of prisoners have experienced mental distress or addiction within their lifetime. Because of this many receive little to no help or support. This project sets about developing strategies and solutions to improve wellbeing with the aim of reducing reoffending. It is hoped that the findings will inform current mental health, addictions and justice reform.

Rentbot, Workbot: Technology has become an ever-increasing priority – enabling more people to access legal support and information. These two chatbots are freely available to anyone. Rentbot answers questions about tenancy law and the legal rights and obligations of renters and landlords. Workbot focuses on employment law – being employed, working conditions, rights and protections for employees and how to resolve disputes.

He Kōrero Taumaha Tonu: 'There is a story to be told'. In 2018, the Borrin Foundation supported the last stage of Dr Moana Jackson's research on Māori experiences of the criminal justice system, 30 years on from the publication of his original landmark report on the same issue – He Whaipaanga Hou 1988. Bringing together over 4,000 voices from across the country, the Foundation has subsequently supported a documentary to be made that will tell the story inherent in the research in an engaging and accessible way to a wider audience.



Telling the story of the people behind the statistics. Moana Jackson, Lead Researcher for He Whaipaanga Hou 2018



Providing practical support

Nurturing a vibrant and diverse region.
National Arts Festival 2019

Image courtesy of Stephen A'Court

Nikau Club members' support pays for essential day-to-day running costs, and that means the Nikau team can focus on making your giving go further.

Funding the nuts and bolts

Annabel McCallum is a born and bred Wellingtonian. She's also a pragmatist, so the idea of becoming a Nikau Club member and contributing towards the nuts and bolts costs of the organisation was instantly appealing.

"I thought the Nikau Club is a really practical way I can support the administration and the running of the Foundation. The Nikau team can then focus on talking to people who may want to set up a fund and looking for fantastic and meaningful organisations to support."

Annabel was introduced to Nikau Foundation by legendary fundraiser and former General Manager Kitty Hilton.

"She talked about Nikau, and the way she described it just absolutely resonated with me – the idea of an organisation that has a local focus and a local impact was really appealing.

"I liked that, although Nikau's focus was local, the range of community organisations it supported was broad – that absolutely appealed to me."

Annabel says she also liked the fact that Nikau Foundation has a small organisational footprint.

"I got the sense that it was a very efficient organisation, that it didn't have a big infrastructure and appeared to be lean and mean relative to the footprint it had."

Beginning a long-term partnership

Annabel traces her interest in philanthropy back to her mother – "a very good role model who believed if you could afford to help others, you should."

She's taken her mother's advice, supporting a number of charities and sees her relationship with Nikau Foundation as a long-term partnership.

"I'm at a point in my career where I can make a commitment to Nikau Foundation – giving a certain amount every year. I see it as setting me up for further down the track where I can begin to make bigger philanthropic decisions."



"I know that sometimes the biggest challenge for a not-for-profit is raising the basic running costs."

Annabel McCallum

"I think legacy giving is a wonderful thing. It feels that, as a Nikau Club member, I can support the organisation in a practical financial way, and in due course, I will be involved with Nikau through a legacy fund that can be put to good use."

Our partners

We simply couldn't do what we do without the support of our Nikau family. Investing their time, resources and expertise, they enable us to grow our reach and continue to deliver transformational change across our region. Thank you.

Community Foundations of New Zealand



We are proud to partner with Community Foundations of New Zealand through which we connect and collaborate with the 17 community foundations across the country – providing invaluable support, knowledge and guidance.

Place-based philanthropy is a growing trend globally, as communities see the benefits of channeling local generosity into local causes.

Over the last five years, through community foundations across the country, \$20 million has been granted to the people and places New Zealanders care about most. Today we have over \$130 million invested from generous locals for the future. Furthermore, we have hundreds of anticipated bequests adding up to many millions of dollars to be invested for community transformation. With our endowment fund model protecting the original gifts, the potential good these gifts can do for the future is boundless.



Growing deep roots for our community. Common Unity

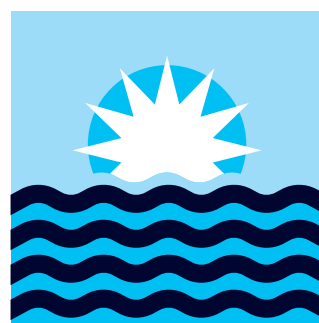
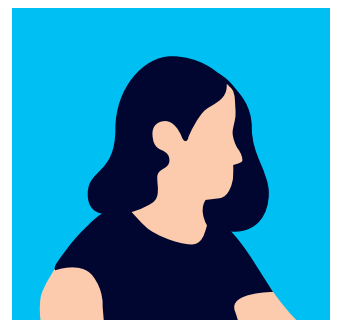
The Tindall Foundation

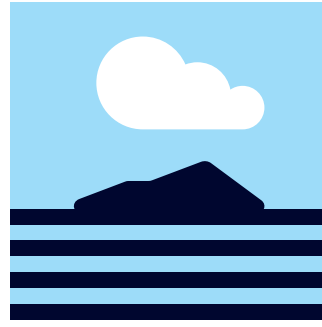


The Tindall Foundation understands the importance of leveraging our community knowledge and insight to ensure it is making the greatest impact locally. In partnership, we support projects working for positive social change. Led by the Foundation's philanthropy strategy, grants are targeted towards helping youth, families, community and the environment.

Our volunteers

From our committed Board of Trustees to our regional volunteers past and present, we continue to be overwhelmed by your generosity, passion and dedication to our community.





Nikau Club

Since 2013, our Nikau Club members have supported us to operate and grow through an annual donation. We wouldn't be where we are today – driving change across our region – without their generosity and belief in our model.

Our aim is to grow the Nikau Club, bringing together more like-minded individuals to collectively make a difference. By joining, you will see first-hand the impact you are having through an annual programme of bespoke events, tailored communications and acknowledgement in our impact report.

Paul and Sheryl Baines

John and Jay Benton

Gary and Judy Black

Rodney and Vivien Callender

Ian Cassels and Caitlin Taylor

Richard Caughley

Mark Dunajtschik

Robert Fisher

Maree Fitzgerald

Jenny George

Holdsworth Charitable Trust

Bryan Johnson

Melika King

Craig Thompson and Gail Jansen

Lloyd Morrison Foundation

Chris and Kathryn Mackay

Annabel McCallum

Phil McCaw

Brian and Cheryl McGuinness

Mark McGuinness

Chris and Jan Milne

Kevin and Julia O'Connor

Frank Pearson

Margaret and Peter Shirtcliffe Foundation

Francis and Dianne Small

Faith Taylor

Joanna Todd

Dick Werry

Corporate support

We are grateful to the local and regional businesses that generously support us throughout the year, investing their time, resources and skills.

Becky Bliss Design

BDO

Coastlands

Craigs Investment Partners

Datacom

Dundas Street Employment Lawyers

Execucare

Hobson Wealth Partners

Jackson Stone

KPMG

Matahiwi Winery

Morrison Kent

The Offering Café

Resultex

Sharesight

Spy Valley Wines

Wakefields Lawyers

The Wellington Company

Nikau Champions

Our Champions are leaders across their sectors and play a very special role in supporting Nikau Foundation to grow our impact, increase our reach and build our profile. From advocacy to professional services, they bring with them a wealth of skills and expertise. We are grateful for their ongoing dedication to our region. Over the next few years, our aim is to grow and nurture this group of like-minded individuals. If you would like to join us, please get in touch.

John Allen

Melika King (Craigs Investment Partners)

Brenda Allen-Browne

Bob Francis

Justin Martin (BDO)

Ian Cassels

Betsyn McHardy (Wakefields Lawyers)

Bryan Shepherd (Jarden NZ)

Nicola Black

Curtis O'Connor (Hobson Wealth Partners)

Claire Tyler (Rainey Collins)

Chris Leatham

Alan Rench (Graeme Wright & Associates)

Rebekah Swan (AMP Capital)

Corporate trusteeship

Roy and Jan Mace Trust

With deep roots in Wairarapa, the Mace family lived and worked in Masterton from the 1860s. Community-minded with a strong ethos for giving back, the Roy and Jan Mace Trust was established through a significant gift made by Alma (Jan) Mace in 1990. Thirty years on, the Trust has now given out over \$550,000 to our region.



Left: The Mace Family including George and Sarah Mace

Middle: Alma Annie May Mace (Jan)

Right: The Mace family on Bramerton Station

Community-minded

For Roy and Jan Mace, playing an active role in the community was a crucial aspect of their lives. Generous with their time and resources, they both held memberships with a number of local organisations and committees. Passionate about horse-racing, Roy was part of the Masterton Racing Club for many years and owned several horses.

A rich heritage

Originally from England, George Mace, Roy's great-grandfather, came to New Zealand in the early 1840s. Having taken up the printing trade during his time in America, he would later make the long journey to Wellington where he initially settled in Te Aro. He quickly found success in business and established a number of companies including a butcher and tannery.

By the 1860s, George had moved to Masterton where he joined a large network of farming families through the purchase of 3,146 acres of land on Castlepoint Road and the marriage of his son Walter to Emma Bennett, whose family owned Otahua. Settling in Wairarapa, George would choose the name Bramerton Station as a nod to the town where he was born in England. Walter and Emma would also make the farm their home, going on to have five children including Roy.

Bramerton Station became an integral part of the Mace family life. It was later passed from George to Walter and then to Guy, Roy's brother. On 14 March 1917, Guy boarded the troop ship *Ruapehu* as a rifleman drafted for World War 1. His wife and children would wait for his return on the farm, but Guy lost his life on the Somme battlefield in 1918. Roy took over management of Bramerton Station.

A couple's legacy

Alma Annie May Mace (Jan) was born in Fairfield, Australia. She came to New Zealand at the age of 24 to start a swimsuit business her plan was to stay for six months, but with the outbreak of war, she found herself unable to return home. When she first arrived in Masterton, she was struck by its natural beauty.

As a young man, Roy wanted to join the navy, but his father thought it best for him to return to the station after completing his studies. Married in 1938, Roy and Jan placed the heart in the home at Bramerton – regularly inviting those who didn't have anyone to join them for Christmas dinner.

After Roy's sudden passing in 1954, Jan tried to keep the station going but ultimately found it too much to manage on her own.

A gift to the community

Originally established through a generous gift of \$200,000 in 1990, Jan would go on to leave a further \$300,000 to the trust as part of her legacy. Ensuring the greatest impact, Nikau Foundation was later made corporate trustee.

Now 30 years later, the fund totals over \$1.2 million and has made over \$550,000 worth of grants to the community across a range of initiatives in the Wellington and Wairarapa region. Local to Masterton, Riversdale surf life-saving club, near Bramerton Station, has been supported, as well as music programmes for people living with Alzheimer's and Dementia.

Roy and Jan Mace's generous legacy means that community groups and charities across their beloved region will continue to get the funding that they need, forever.

Creating the heart of the home

The House of Grace is a safe haven, giving young mums-to-be a place to stop, breathe and learn life and parenting skills. Last year, Nikau Foundation helped pay for roof repairs, but the impact of this grant is so much more than just bricks and mortar.

A huge dining table is now the central hub of activity at Wellington's House of Grace. But it was a different – and sometimes very noisy – story before much-needed roof repairs were completed, says Regional Manager Fiona Collins.

“We've got a giant dining table, and everybody eats together every day – but we had a very leaky roof. The skylights over the dining room were made from old plastic, so whenever it rained, you couldn't have a proper conversation because it was so loud.”

Space to make connections

Fiona says the Nikau Foundation grant made a huge difference, enabling them to create a comfortable space where House of Grace residents could spend time together.

“With funding from Nikau, we managed to purchase two quite large skylights. They are double glazed, so that means you can now talk! So that's amazing.”

“The dining table is more than just a spot where you eat and go. It's just so lovely in there now. Often people will stay and chat, which is great for making those connections in the home.”

“It doesn't sound so glamorous for funding to go on a building project like that, but essentially, if we didn't have a building that served its purpose, we wouldn't have the House of Grace.”

Realising a vision

Since it was established in 2001, the House of Grace has helped more than 200 young women learn life skills and prepare for parenting or, if they choose, adoption.



Supporting young women on their journey into motherhood. House of Grace

The non-profit organisation was started by Treena and Marcus van Rijssel after the Wellington couple saw a gap in support offered to vulnerable pregnant teens. They knew they could do something to help.

“It was really something that was placed on their hearts,” says Fiona.

The organisation now has two family homes in Wellington and Hamilton run by house parents. There are plans to create a third in Christchurch.

At any one time, up to four young women and their babies can be accommodated in each home. Fiona says while the numbers may not seem huge, the intention is to provide a supportive, family-like environment for the young women.

“It's big enough to feel like a very busy household, but not so big it feels like an institution or a boarding house.”

Next steps

While a new Christchurch family home is firmly on the cards, Fiona says the long-term vision is to develop a billeting model to source, train and support families around New Zealand to have young mums and babies living with them.

“The House of Grace is wonderful for a season. It's a perfect place for young women to stop, breathe and get set in the right direction. But they don't stay long term, so we're looking at working with families to potentially have a reach throughout far more of New Zealand.”

“They had a vision of young women needing a family environment – not a course or a programme, but a home and a family where they can be safe, loved, nurtured and accepted with their baby no matter what.”

Fiona Collins
House of Grace



Learning essential life skills on local waters. Te Ara Moana Trust

Growing an invaluable asset for Porirua City

Nikau Foundation demonstrates it's the best guardian for managing and investing \$5 million of community assets for the region.

Benefiting from an economy of scale plus having access to Nikau Foundation's investment expertise were just two reasons for creating the Porirua Fund.

The new fund will enable Nikau Foundation to grow its presence and impact in the Porirua region. It was established after an external review commissioned by trustees of the former Trust Porirua found the community foundation model would be a more efficient way of managing the \$5 million of community assets they oversaw.

"Trust Porirua and its assets needed to get to a place where they could work effectively for Porirua, with maximum returns to the community. The decisions made as a result of the review helped

secure the future of funding for the Porirua region in a sustainable way," says former Trust Porirua Chair and current Porirua Fund committee member Tim Sheppard.

Establishing a fund within Nikau Foundation also meant additional savings on trustee fees, Public Audit Office and trustee election costs – and that meant more money for the Porirua community.

"The decision to create this new fund was a no-brainer," says committee member Eleanor Cater.

"Under this new structure, the Porirua Fund will be able to return more than three times as much to the Porirua region

as it did in its previous form. That's great for our community."

The committee overseeing the new fund are a diverse group of local people who love Porirua and are passionate about working with community groups to help shape their city's future.

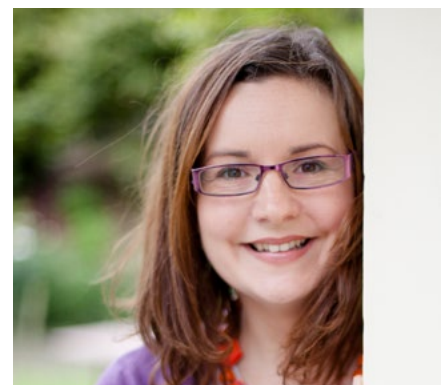
Chair Rebecca Morahan says the new fund will have real lasting benefits for the region and its people.

"The Nikau Foundation Porirua Fund brings new and exciting opportunities to our community. The dream is that Porirua will be positively transformed forever through the power of local generosity."

"It's reassuring to know that, by partnering with Nikau Foundation, our community's assets are ring-fenced for local benefit and will be safeguarded and grown." Eleanor Cater



Eleanor Cater



Rebecca Morahan

Our people



Our Patron
Dame Fran Wilde



Our team

The team at Nikau Foundation bring a wealth of skills, expertise and passion to the organisation and are committed to making a difference for our communities.

From left to right: Adrienne Bushell, Suzanne Main, Alice Montague (Executive Director), Lindy Young and Em Lewis. Not pictured: Caroline Ward

Our Board Members

Nikau Foundation is led by a dedicated volunteer Board of Trustees who are leaders within their sector and connected into the community.

From left to right: Richard Caughley, Robert Cross, Peter Verhaart, Rebecca Morahan, Greg Kelly, Susan Hornsby-Geluk, Chris Milne (Chair), Adrienne Olsen, Adrian Orr and Rachel Roberts. Not pictured: Jill Day, Liz Koh (Deputy Chair) and Pancha Narayanan





Our model

Preserving our rich natural heritage for future generations.
Ngā Manu Nature Reserve

We are part of a world-wide network. Across Aotearoa New Zealand, there are 17 community foundations made up of local people who are passionate about where they live. Together, we work to ensure that local generosity goes to local causes.

We are governed by passionate leaders

Our trustees are leaders in their fields, generously giving their time, skills and expertise to support and grow Nikau Foundation. In accordance with our Trust Deed, the Foundation can be governed by up to 14 trustees, each serving a three-year term with the possibility of reappointment.

We welcome diversity of thought

As part of our commitment to inclusivity, the Board’s composition is reviewed regularly, ensuring it reflects the richness of society with community representation. This process enables us to grow our team of skilled and committed trustees who actively advance the goals of Nikau Foundation.

We identify the skills we need to grow

Our model is multi-faceted. We are an investor, grant-maker and fundraiser. To support each of these areas, we need a range of skills and expertise from across different sectors. That’s why we have established several committees advising the Board on key aspects of our operation:

• Organisational management

To ensure Nikau Foundation is relevant, impactful and responsive to our donors and communities, the Board reviews the strategy annually with support from our staff and regional volunteers. Our Governance Committee takes a lead role in delivering the strategy, managing all aspects of our operation, people and meeting annual milestones.

• Our grant-making

Our Grants Committee provides us with community leadership, insight and connectedness. With its support and in line with our donors’ wishes, we can ensure that our grant-making is strategic and meets our community’s needs. All our grants are approved by the Board on an annual basis.

• Financial management

We have two committees supporting the financial management of Nikau Foundation, the Michael and Suzanne Borrin Foundation and any other entities where we are the sole corporate trustee. Our Audit and Risk Committee supports financial management and compliance, risk management, internal controls, the external audit process and budgeting. Our Investment Committee oversees and advises the Board on the appointment of investment advisors/managers, establishing and reviewing the Statement of Investment Policies and Objectives (SIPO) for the investment of funds, financial performance, compliance and management of the property portfolio. It also develops and oversees our Distribution Policy – determining our annual grant distribution while ensuring that the real value of our funds is maintained over the medium to long term.

• Our profile

Our Marketing and Communications Committee provides us with vital support to build our brand profile, increase stakeholder engagement and deliver high-quality communications for our varied audiences.



Helping young musicians flourish. Arohanui Strings

We are ethically minded

Our aim is to secure the social, economic and environmental wellbeing of our region – now and in the future. As part of this commitment, we work with our fund manager Hobson Wealth Partners to ensure that all our investments are made responsibly – avoiding direct investment into companies operating primarily in gambling, alcohol and other industries such as armaments.

We are a trusted partner

More and more people are choosing to invest in our model, and nowhere is this more evident than the 2016 bequest by Judge Ian Borrin who chose Nikau Foundation to manage his \$38 million legacy – now \$44 million – to drive a culture of social

justice and equality for Aotearoa New Zealand. We are also the corporate trustee of the Roy and Jan Mace Trust, jointly managing a \$1.2 million fund providing vital support for children, families and community development in Wellington and Wairarapa.

We are lean and effective

We are committed to ensuring the largest return for the benefit of our region, but to do this, we must maintain and support the growth of the Foundation. Our operational costs (including salaries, rents and so on) are covered by three sources – the generous support of our Nikau Club, our corporate trusteeships and a small annual charge applied to our endowment funds.

Our Board and committee members (as at 30 September 2019)

Name	Board	Governance	Audit and Risk	Investment	Grants	Marketing and Communications
Chris Milne	●	●	●	●	●	●
Robert Cross	●		●	●		
Pancha Narayanan	●				●	
Adrienne Olsen	●				●	●
Rachel Roberts	●				●	●
Liz Koh	●	●		●		
Richard Caughley	●	●		●		
Jill Day	●					
Susan Hornsby-Geluk	●	●				
Greg Kelly	●					
Rebecca Morahan	●				●	
Adrian Orr	●		●			
Peter Verhaart	●			●		
Tony Paine					●	
Grace Brennan					●	
Kevin O'Connor				●		
Jackie Robertson			●			
Alice Montague	●	●	●	●	●	●
Suzanne Main	●		●	●		
Em Lewis	●		●	●	●	●
Adrienne Bushell					●	

- Chair
- Deputy Chair
- Member
- Co-opted
- Ex officio



Nikau Foundation
Statement of financial position
As at 30 September 2019

	30 Sep 2019 \$	30 Sep 2018 \$
Assets		
Current assets		
Bank accounts and cash – Administration	318,576	330,577
Bank accounts and cash – Endowment	317,678	241,368
Debtors and accrued income – Administration	87,449	330,968
Short-term bank deposits – Administration	301,358	20,000
Total current assets	1,025,061	922,914
Non-current assets		
Social loan (>1 year) – Endowment	0	8,500
Property, plant and equipment – Administration	7,102	5,475
Investments – Endowment	12,816,702	6,803,512
Investment property – Endowment	1,700,000	70,000
Total non-current assets	14,523,804	6,887,488
Total assets	15,548,865	7,810,401
Liabilities		
Current liabilities		
Creditors and accrued expenses – Administration	165,316	154,112
Employee costs payable – Administration	5,789	19,904
Other current liabilities – Endowment	14,492	7,837
Total current liabilities	185,597	181,852
Net assets	15,363,268	7,628,549
Represented by:		
Accumulated funds		
Administration account	543,380	521,505
Endowment account	14,819,888	7,107,044
Total accumulated funds	15,363,268	7,628,549

Summary

The 2018/19 financial year was a significant one for Nikau Foundation with the net assets of the Foundation doubling over this time frame. The biggest factor in this growth was the creation of the new Porirua Fund, established from the residual assets, following the wind-up of Trust Porirua.

The accounts of Nikau Foundation are split internally into administration and endowment ledgers, thereby ring-fencing donated endowment investments from Nikau's own financial resources. This split is presented in these financial statements to demonstrate the performance and position of each. Tier 3 financial statements were also prepared, showing a combined view. These received an unqualified audit opinion from KPMG and are available from the websites of both Charities Services and Nikau Foundation.

Endowments

During the year, endowment funds under management more than doubled from \$7,107,044 to \$14,819,888. There were 48 endowment funds under management at year end (up from 37 the previous year).

Nikau's endowment fund assets are pooled and invested with Hobson Wealth Partners. Our general investment positioning, as illustrated in the pie chart, is 'moderately conservative'. The endowment portfolio at Hobson Wealth Partners achieved an average return of 10.33% over the financial year.

A management fee is charged by Nikau Foundation to its endowment funds. This internal charge supports both the oversight of the investment function by Hobson Wealth Partners and the Foundation's critical grant-making function. The latter requires a significant amount of resource and staff time. The Nikau management fee amounted to \$164,237 for the year. Whilst it is an internal charge for statutory accounting purposes, it is shown in these statements as expenditure in the endowment account, and income in the administration account.

Nikau Foundation

Statement of financial performance

For the year ended 30 September 2019

This year, we distributed \$450,977 of grants from Nikau endowment funds, which is the highest distribution the Foundation has made since its inception. It reflects the growth in the total value of endowment funds and the returns achieved as well as an increase in the number of endowment funds reaching the granting threshold.

Administration

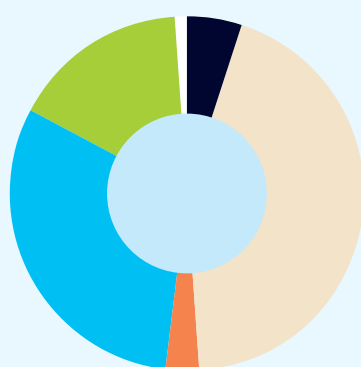
Administration income increased by 8.5% from the prior financial year, reflecting the growth in assets under management for which Nikau Foundation receives a fee.

The contributions of Nikau Club members continue to assist the Foundation in its growth and ability to achieve its operating goals.

Over the same period, administration expenses have increased by around 5%.

The net result has been a small increase in the accumulated administration surplus from \$521,505 to \$543,380. Administrative reserves represent a little under one year of administrative expenditure, and this ratio is similar to the previous year.

Distribution of pooled endowment assets



- Bank accounts and cash
- NZ fixed interest
- NZ property
- Australian equities
- International equities
- International property

	12 months to 30 Sep 2019	12 months to 30 Sep 2018
	\$	\$
Income		
Total income – Administration	582,066	529,715
Total income – Endowment	8,423,002	1,083,643
Total income	9,005,068	1,613,358
Expenditure		
Total expenditure – Administration	560,191	525,411
Total expenditure – Endowment	710,158	168,919
Total EXPENDITURE	1,270,348	694,330
Total surplus for the year	7,734,720	919,028

Endowment account

Income

Endowments received	6,799,924	452,208
Investment income	954,101	456,457
Investment revaluation	668,977	174,978
Total INCOME	8,423,002	1,083,643

Expenditure

Grants and donations	450,977	75,141
Investment property expenses	94,944	0
Trustee and portfolio management fee	164,237	93,777
Total EXPENDITURE	710,158	168,919
Surplus from endowment account	7,712,845	914,725

Administration account

Income

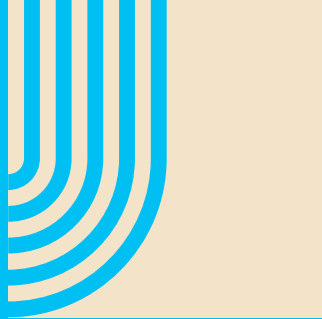
Donations and sponsorship	115,845	134,196
Endowment, grant distribution and corporate trustee fees	456,415	374,446
Interest received	8,824	6,250
Rent received	600	1,800
Fundraising income	382	20,023
Total INCOME	582,066	536,715

Expenditure

Audit fee	8,000	8,500
Depreciation	5,414	3,893
Donations	8,000	7,000
Fundraising expenses	8	23,539
Insurances	3,975	3,540
Office expenses	42,972	44,041
Professional fees	67,041	51,024
Promotion and publicity	25,428	37,758
Research costs	5,000	0
Volunteer and employee related costs	374,731	337,741
Other expenses	19,622	15,375
Total EXPENDITURE	560,191	532,411
Surplus from administration account	21,875	4,304

Our year







Nikau
FOUNDATION

T 04 381 2224
info@nikaufoundation.org.nz

Level 4
44 Victoria Street
Wellington 6011

PO Box 24-220
Manners Street
Wellington 6142

