



Nikau
FOUNDATION

Impact Report 2022
Te Pūrongo ā Tau



**Nā tō rourou, nā taku
rourou ka ora ai te iwi.**
With your food basket and my
food basket the people will thrive.





“Nikau Foundation is accessible in so many ways to grassroots organisations like us. The resources, connections and support you provide ensure we can deliver services for our communities that are seamless and sustainable.”

Taima Fagaloa, Cycle Safe Porirua Trust

Philanthropy highlights

202
grants given to organisations effecting positive change in our communities.



\$1,033,870
granted to organisations making an impact throughout Te Upoko-o-te-Ika-a-Māui the Greater Wellington region.



11
new funds committed by generous individuals, families and organisations.

\$31.9m
invested and growing to support our communities forever.

75
funds giving back to our communities forever.

\$132,190
supporting children and youth to reach their potential.

\$82,537
fostering our region's flourishing arts scene.

\$71,750
granted to advance education and research.

\$46,368
protecting and conserving our region's flora and fauna.

\$123,880
protecting the physical and mental health of our communities.

\$221,600
supporting our communities through foodbanks and social services.

Cover image credit: Ngā Uri o Whiti Te Rā Mai Le Moana Trust.

Contents



Our mission	3
Where we work	4
Our model	4
From the Chair	5
From the Executive Director	6
Making a difference, wherever your heart is	7
Our people	8
A powerful legacy for one of Wellington's most progressive women	11
Strengthening the story of a Wellington institution	12
Providing inclusive opportunities for fun and exploration	13
Promoting social change through the arts	14
Our community – Kāpiti	15
A permanent home for an important community hub	16
Honouring a life of generosity	17
Our community – Porirua	18
A hub to connect, support and empower youth	19
Inspiring kaitiakitanga for marine life and Aotearoa New Zealand's coastline	20
Our community – Wairarapa	21
Supporting older generations to navigate the digital world	22
Helping students to unlock their potential forever	23
Our community – Wellington	24
Update from the Michael and Suzanne Borrin Foundation	25
An enduring gift for the city Mark helped to build	26
From Community Foundations of New Zealand	28
Positioning for growth	29
Financials	30
2022 grants	32
Our supporters	41
Our funds	42
Our grant-making partners	45

Our mission is to build healthy, thriving and resilient communities across Te Upoko-o-te-Ika-a-Māui the Greater Wellington region

Together, we are building reliable long-term funding streams to support the people and places of our region – today, tomorrow and forever.

As the Greater Wellington region’s community foundation, we are committed to creating transformational change for our communities, ensuring everyone has the tools and resources they need to flourish. We have strong connections to our communities and are in tune with their needs, working alongside them to ensure local generosity goes to local causes.

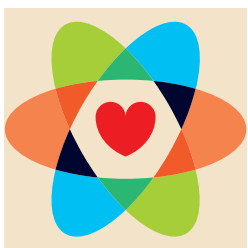
Our story

Nikau Foundation was established in 1991 with the goal of growing generosity throughout Te Upoko-o-te-Ika-a-Māui the Greater Wellington region. Inspired by the success of community foundation movements globally, Nikau was the first of its kind in Aotearoa New Zealand. Today, there are 17 community foundations throughout the country, each working to make a positive and lasting impact within their respective regions.

Across the network, we have given out over \$50 million throughout Aotearoa New Zealand in the last five years, with over \$230 million managed nationally.

Nikau is honoured to be the guardian of almost \$32 million that has been invested to support our communities forever.

Our values



Ethical

We approach every aspect of our work with transparency, fairness and integrity.



Transformative

We create meaningful change in our communities by building reliable funding streams and practising effective grant-making.



Inclusive

We value the diversity in our communities and strive to build a culture of respect and inclusion.



Flexible

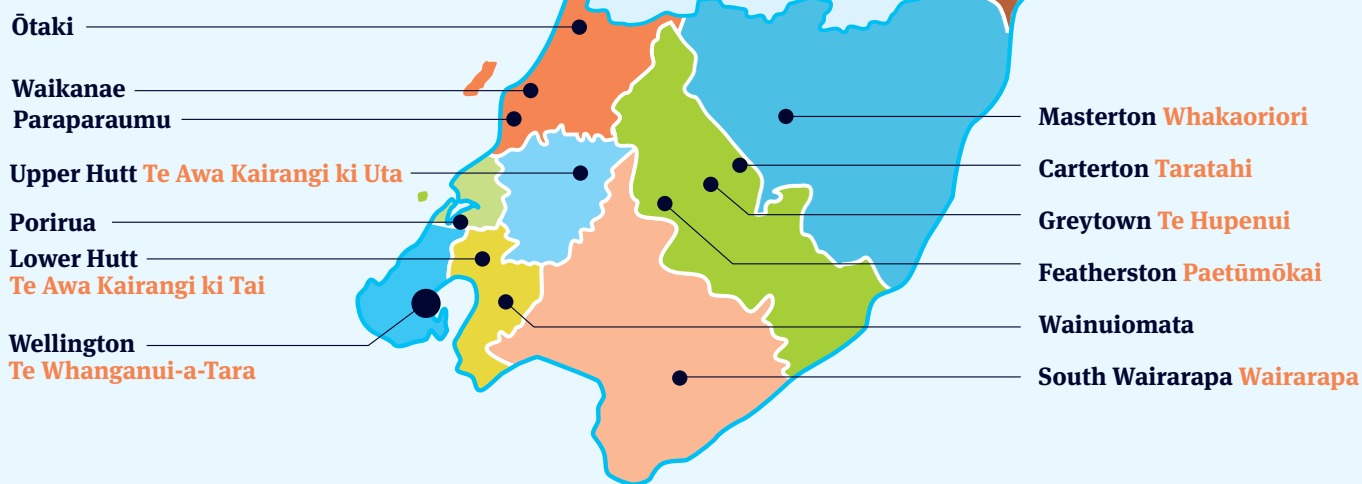
We offer a tailored approach to giving, allowing donors to give to the people and places they love. We are adaptable to the changing needs of our communities and region.



Collaborative

With deep roots in the community, we work to maximise our impact through relationships and partnerships.

We are Te Upoko-o-te-Ika-a-Māui the Greater Wellington region's community foundation



Our region's communities are diverse and richly layered. With different cultural, social and economic backgrounds, the challenges they face are complex and varied. The community organisations that exist here work hard to address inequities, find solutions to problems and make a difference on their doorstep.

Wellingtonians are a naturally generous bunch. They are the first to roll up their sleeves, to volunteer their time or to donate to causes they love. Nikau ensures that local generosity goes to these local causes. We work with more than 40 local volunteers based across Porirua, Wairarapa, Wellington and Kāpiti. With their guidance and knowledge, we are connected to our communities in a meaningful way, ensuring our support is impactful and relevant to the issues they face today.

Our model

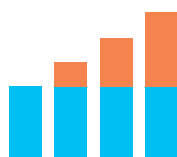
Nikau understands that healthy, happy, thriving communities require long-term, sustainable support and resources. That's why we invest and grow the gifts we receive, however big or small, to create positive change for our region today, tomorrow and long into the future.

Gifts



Gifts are provided by generous individuals, families and organisations.

Investment



Gifts are responsibly and ethically invested and grown to maximise ongoing impact.

Grants



A portion of our investments is given out in grants to organisations doing good mahi throughout our region every year.

From the Chair

E aku nui, e aku rahi, tēnā koutou katoa.

It is my pleasure to bring you Nikau Foundation's 2022 Impact Report. This year was particularly significant for us. We farewelled and welcomed team members, established new funds to support our region forever and placed greater focus and investment on areas that directly support our communities.

Throughout it all, the Nikau team, trustees and volunteers have absolutely shone. They bring an incredible amount of energy, passion, creativity and expertise to their respective roles. I cannot thank them enough for their amazing mahi in 2022.

In March, we welcomed Emma Lewis to the role of Executive Director. Having previously worked as Nikau's Engagement Director, Emma is a sound strategic thinker and strong leader with extensive experience in the philanthropic sector. I have been impressed by her leadership over the last year and look forward to the next exciting chapter of Nikau with her at the helm. I would also like to acknowledge the contributions of former Executive Director Alice Montague, who created a solid platform for Nikau to grow and effect positive change for our region.

Nikau is now the guardian of almost \$32 million – a significant legacy that will have lasting impact for generations to come. Combined with corporate trusteeships, including the Michael and Suzanne Borrin Foundation, this brings our total funds under management to \$80 million. In perhaps our biggest achievement of 2022, Nikau Foundation distributed more than \$1 million in grants. We should all be immensely proud of this. For community organisations, securing funding can be a game-changer. It can often mean blue-sky ideas are transformed into programmes, salaries can be paid or more support services can be delivered to people in need. These grants helped almost 200 organisations in practical and relevant ways.

In January, we farewelled long-serving trustee and Deputy Chair Liz Koh. Thank you Liz for your dedication, time and expertise. We are fortunate that Liz remains in the Nikau whānau on the Nikau Kāpiti Committee.

We welcomed new trustee Horiana Irwin-Easthope in April. With an extensive legal background rooted in mātauranga Māori (Māori knowledge), Horiana brings a wealth of experience to Nikau. In May, we recognised the outstanding input of Nikau founder,



former Chair and donor Kevin O'Connor by naming him as Patron – a role that reflects his long-standing commitment to Nikau and the leadership he has exercised over the years.

Having grown from a small, self-managed not-for-profit to a medium-sized institutional investor over the last few years, we took steps to position ourselves for the future by partnering with Craigs Investment Partners and Harbour Asset Management to manage our funds. These partnerships will continue to enable us to grow local generosity for the benefit of local causes.

As our communities face persistent social, economic and environmental challenges, the role that community foundations play is critical. Our long-term focus and purpose to create reliable funding avenues mean we can stand by them to deliver their services and support our communities' needs, no matter the circumstances. As a proud Wellingtonian, it is a pleasure to be part of an organisation with sustainability at its core and a vision to support our region forever.

Thank you for your continued support of Nikau Foundation. Whether you are a donor, supporter, volunteer or partner, we recognise your commitment to create a more vibrant, resilient and healthy Greater Wellington region.

Ngā mihi nui

A handwritten signature in black ink, which appears to read 'Fran Wilde'. The signature is fluid and cursive.

Dame Fran Wilde
Chair

From the Executive Director

Tēnā koutou katoa.

There are simply not enough words to describe how proud I am of Nikau Foundation as a funder, a partner, a team and an advocate for this wonderful region that we call home.

To do all these things well requires support and expertise, innovation and creativity, governance and leadership, local knowledge and insight. I am humbled that we now have more than 40 volunteers, from members of our Board to those locally based, working alongside us to achieve our goals. The gift of time is the greatest gift of all, and I would like to thank them for their contributions in 2022, the impact of which is felt not only across our organisation but also in the communities we serve.

There is no other network of philanthropic foundations that can support donors to truly realise their giving goals and connect them to the greatest need. Every gift, large or small, forms a part of our story and the impact we have today, tomorrow and for generations to come. Not only did we establish 11 new funds in 2022, but we also reached a significant milestone of 75 funds.

These include The Edith Spratt Fund, supporting older people and those living with or supporting people with dementia; the O’Dea Illingworth Fund, helping climate change action and research; and the St Matthew’s Old Girls’ Association Fund, providing scholarships for young women to achieve their potential. I would like to thank every person and organisation who has made a gift or chosen us as the guardian of their legacy – we are truly grateful for your support.

Nikau Foundation is at an exciting phase in our journey and continues to be ambitious with the goals we set ourselves, all of which help us work towards the best possible community outcomes. Growth in funds and the introduction of new roles provided us with an opportunity to reorganise and further invest in critical areas of the organisation such as grant-making, financial management, community engagement and volunteer management. This has placed us in a strong position going into 2023, and I am honoured to work alongside the Nikau team, all of whom bring their expertise, dedication and passion to their individual roles.



I would like to take this opportunity to thank former Executive Director Alice Montague for her considerable contribution. We wish her all the best for her next chapter.

It takes a very special person to leave a lasting mark on an organisation, and Adrienne Bushell is one of these people. After 15 years of service, Adrienne retired from her role in April 2022. Fundraiser, storyteller and donor, cheerleader, volunteer and friend, Adrienne has given her all to Nikau, and it is not an exaggeration to say that, without her, we simply would not be where we are today. I cannot thank her enough for her significant contribution, and I am delighted she continues to work alongside us as part of our Nikau Kāpiti Committee.

As the capital city’s community foundation, we are well positioned to help shape the future of our region. To do this, however, we rely on the generosity of our donors. Sir Mark Dunajtschik has been instrumental in creating the city we so love today and continues to work tirelessly to ensure our communities can access the support and services they need. We are honoured and humbled that Sir Mark has now chosen Nikau Foundation to be the guardian of his legacy – one that will transform the lives of people living with a disability forever. On behalf of all of us at Nikau and our communities, thank you Sir Mark for your unwavering commitment, generosity and support of the people and places we love most.

Thank you for your ongoing support of Nikau Foundation. Together, we are creating a thriving Greater Wellington region.

Ngā mihi nui

A handwritten signature in black ink that reads "Emma Lewis". The signature is fluid and cursive.

Emma Lewis
Executive Director



Making a difference, wherever your heart is

Whether you are passionate about helping youth fulfil their potential, ensuring that our natural flora and fauna are preserved for generations to come or fostering Wellington's flourishing arts scene, Nikau Foundation allows you to create transformational change for the people and places you love.

There is no 'one size fits all' when it comes to giving through Nikau Foundation. While some choose to establish an individual fund based on their interests, others choose to give as a family, leave a gift in their will or give monthly online. However you wish to give, we're here to make sure the causes you care about are supported today, tomorrow and long into the future.

New funds

We would like to acknowledge the generous individuals, families and organisations who chose to establish a fund with Nikau Foundation in 2022.

Glenn and Sheryl Todd Fund

Committed to supporting animal welfare, health, general community initiatives and the volunteer sector.

O'Dea Illingworth Endowment Fund

Providing support for climate change research, action and prevention and soil science research.

Reintegration on Leaving Prison Fund

Dedicated to supporting ex-prisoners to reintegrate into the community.

Roy and Jan Mace Fund

Supporting our communities with an emphasis on poverty relief, advancement of education and religion and transportation to medical facilities.

Ruth Austad Fund

Supporting transportation to medical facilities.

The Austad Fund

Supporting health and palliative care services and the arts with an emphasis on music.

The Edith Sprott Fund

Supporting older people, those living with dementia and those supporting them.

The Jamie Bull Fund

Supporting environmental conservation initiatives and pressing needs within the community.

We were also delighted to welcome one anonymous fund to the Nikau whānau in 2022.

Safeguarding organisational impact

More and more organisations are working with us to ensure they can achieve their organisational goals, better serve their communities and create transformational change long into the future.

In 2022, two new funds were set up by organisations that we are honoured to now work alongside.

Creative Kāpiti Fund

Committed to nurturing the flourishing arts scene that makes the Kāpiti Coast special.

St Matthew's Old Girls' Association Fund

Dedicated to supporting St Matthew's students to reach their potential in the spirit of the school's motto 'Ad astra per aspera – to the stars through endeavour'.

“Kāpiti locals are naturally supportive of each other – we go to openings, visit digital installations and thousands attend the Kāpiti Arts Trail every year. The Creative Kāpiti Fund is just another way to nurture our incredible arts scene for generations to come.”

Liz Koh

Trustee, Creative Kāpiti Trust

Our team

Office team

Each with a passion for our region, our team brings a wealth of skills and experience to our organisation, making a difference every day.



Left to right: **Hilaire Carmody**, Executive Administrator. **Emma Lewis**, Executive Director. **Lindy Young**, Funding and Relationships Manager. **Denisa Calian**, Chief Financial Officer. **Maddie McLeod**, Marketing and Communications Manager. **Robyn Flynn**, Assistant Accountant.

Volunteer trustee team



Left to right: **Rebecca Morahan**, **Richard Caughley**, **Rachel Roberts**, **Susan Hornsby-Geluk**, **Dame Fran Wilde** (Chair), **Adrienne Olsen**, **Warren Allen**, **Peter Verhaart**. Not pictured: **Adrian Orr**, **Horiana Irwin-Easthope**, **Wendy Venter** (Chair, Audit, Risk and Investment Committee).

Dame Fran Wilde (Chair)

Dame Fran brings a wealth of leadership and governance experience from the public and private sectors. She is currently Chair of the boards of Te Papa Tongarewa, Whānau Āwhina Plunket, the Asia NZ Foundation and Auckland Light Rail. Fran is a former Cabinet Minister, Mayor of Wellington and Chair of the Greater Wellington Regional Council.

Warren Allen

With many years' experience in governance and advisory positions, both in the public and private sectors, Warren is a past President of the New Zealand Institute of Chartered Accountants, former EY Country Director of Audit and past President of the International Federation of Accountants.

Richard Caughley

Richard is a lawyer and has been a partner of Morrison Kent since 1985. He is a member of the Morrison Kent Board. Richard is the Nikau representative on the Grants and Scholarships Committee of the Michael and Suzanne Borrin Foundation.

Susan Hornsby-Geluk

Susan is the Managing Partner of Dundas Street, an award-winning specialist employment law firm based in central Wellington. Susan is rated by international agencies as one of the top three employment lawyers in New Zealand. She is a go-to person for complex strategic/high-profile matters, and her work is largely at chief executive or board level.

Horiana Irwin-Easthope

Ngāti Porou, Ngāti Kahungunu, Ngāti Rakaipaaka.

In 2018, Horiana founded Whaia Legal, which is underpinned by mātauranga Māori and aims to push the status quo by acknowledging the unique place of whānau, hapū and iwi within Aotearoa New Zealand. Motivated to play an active role in social change, Horiana also sits on the boards of Wellington Community Fund and the New Zealand Climate Change Network.

Rebecca Morahan

Rebecca has over 20 years' experience in IT, project management, business process and consultancy. She formerly sat on the boards of Bellyful NZ and WELLfed, which she also co-founded. Rebecca has a passion for not-for-profit success through efficient operations and strong governance.

Adrienne Olsen

Adrienne is the principal at Adroite Communications and has many years' experience in strategic communications, reputation management and public relations. She is Chair of the Halberg Endowment Fund and is a life trustee of the Halberg Foundation.

Adrian Orr

With extensive experience in economics, public sector finance and international governance, Adrian is the current Governor of the Reserve Bank of New Zealand Te Pūtea Matua and former Chair of the International Forum of Sovereign Wealth Funds and the Pacific Pension and Investment Institute.

Rachel Roberts

With a background in journalism, radio production, strategy, communications and relationship management, Rachel has worked with many not-for-profits, businesses and government agencies to drive meaningful, practical outcomes and sustainable change.

She is passionate about strategic leadership solutions and community-driven activation, supporting and consulting clients as diverse as philanthropic organisations and Land Search and Rescue.

Wendy Venter

Wendy is an independent board director and consultant. She is a director of Plant and Food Research and GNS Science, a board member of the New Zealand Auditing and Assurance Standards Board, an independent member of the Treasury's Audit Committee for the Government Financial Statements and chairs the Risk and Assurance Committees of Stats NZ and the Parliamentary Counsel Office. She is a former partner at EY, Deputy Chief Executive at the Ministry of Social Development and Assistant Auditor-General.

Peter Verhaart

With over 30 years' experience in New Zealand investment markets and asset consulting with charities, Peter formerly headed up the NZ Multi-Asset Group at AMP Capital, served as General Manager of AXA Global Investors and was Head of Investment Consulting NZ at Mercer and Head of Wholesale and Private Investment at Kiwi Invest. He is currently a Senior Investment Consultant at Eriksens Global.

Co-opted members

- **Kevin O'Connor**
(resigned from Investment Committee* in February 2022)
- **Jonathan Tomkins**
(resigned from Investment Committee* in February 2022)
- **Ian Perry**
(co-opted to Audit, Risk and Investment Committee)

*Now known as the Audit, Risk and Investment Committee.

Image Credit: Edith Sprott, wife of the Bishop of Wellington. Original photographic prints and postcards from file print collection, Box 3. Ref: PAColl-5671-51. Alexander Turnbull Library, Wellington, New Zealand.





A powerful legacy for one of Wellington's most progressive women

Providing equitable, accessible support for older generations and people with dementia
In 2019, what was then known as the Spratt House Trust rebranded to the Edith Spratt Trust. More than just a name change, this was a powerful acknowledgement of the woman behind its long history and a compelling statement to articulate the future vision of the Trust.

Its namesake Edith Spratt (nee Campbell) was born in Dublin, Ireland, in 1859. Although she was born to an affluent family, great poverty was prevalent in the surrounding city. Edith was aware of the challenges of those less fortunate than her from a young age, and she worked in women's and children's welfare from her early 20s. It was this experience, as well as her years working in a slum parish in Kingston upon Hull, England, that formed the foundation for a lifetime of work with marginalised and vulnerable communities.

Edith arrived in New Zealand with her husband Reverend Thomas Spratt in 1892 and when he was made Anglican Bishop of Wellington in 1911, she became involved with St Mary's Guild – an organisation with roots in the Anglican Diocese of Wellington. Its premises, which were then described as a "home for orphan and destitute girls, and for those living in undesirable surroundings", were located in Newtown. Edith's involvement in the Guild, as a member from its establishment in 1898 and then as President from 1923–1925, came at a time when support for women and children was rare. As a forward-thinking individual, Edith saw this as an opportunity to help women by providing professional care and opportunities for employment. St Mary's Anglican Home moved to Karori in 1900, where it housed 101 children and young women across four sites.

Moving with the times

The introduction of the Social Security Act in 1938 meant better infrastructure for welfare, decreased financial hardship and better living conditions and healthcare services. With parents now better equipped to care for their children, the demand for St Mary's Home's services declined, and in 1951, the home was transitioned into a home for "elderly gentlewomen".

Although Edith Spratt died in 1945, this next chapter mimicked her pioneering, determined spirit, with the Guild spearheaded by an all-female staff. Like Edith, these kinds of services were also progressive. "There was little in the way of residential care available at that time, and what little was available was run by church or community organisations," says Edith Spratt Trust Chair Chris Sanders.

In 1971, St Mary's Anglican Homes Trust Board became Spratt House Homes Incorporated, and by 1989, both entities were wound up with their assets transferred to the newly formed Spratt House Trust, which continued to provide quality aged care from its Messines Road property.

An enduring legacy

2019 signalled a step-change in the Edith Spratt Trust's story. Having sold Spratt House a year prior, the Trust was looking for a way to ensure the perpetuity of Edith's legacy, wanting assurance that "the Edith Spratt name would continue to effect real change in our communities, as it has in Wellington for over 120 years".

It was also important that the proceeds from the sale of Spratt House were managed effectively and would give back to causes the Trust believed would be close to Edith's heart. Nikau Foundation provided the guardianship they were looking for, so The Edith Spratt Fund was established in 2022.

"The Edith Spratt Fund has a mission to make life better for older people and people living with or supporting people with dementia," says Chris.

This funding focus was a natural fit given Edith's commitment to her communities, the Trust's affiliation with aged care and lack of available funding in these areas.

Echoing Edith's work with St Mary's Guild and the Anglican Church, the fund will focus on addressing inequities and making sure everyone can access quality care. "Unless you are in the position to self-fund, access to many services takes a back seat. It is our vision, through funding, to address this inequity," says Trust board member Chris Thompson.

"We are honoured to be working alongside members of the Edith Spratt Trust," says Nikau Foundation Executive Director Emma Lewis. "Edith was a true pioneer, leading the way in what community care and support could and should be. As a woman of her time, we must commend her bravery in being progressive, enterprising and unafraid to do things differently. It is truly the ultimate privilege to be able to continue in her footsteps and play a part in ensuring her legacy stands the test of time."



Image credit: Wellington Free Ambulance.

Strengthening the story of a Wellington institution

While Wellington Free Ambulance’s vehicles may have evolved from Bedford trucks to custom-built Mercedes-Benz and Volkswagen vehicles, its headquarters moved from Te Aro to Thorndon and its team expanded to over 400, there is one thing that has remained constant in its 95-year history.

“Our vision from day one has always been to remain free,” says General Manager of Fundraising and Communications Claire Carruthers. “It was the mission of Founder Sir Charles Norwood that our service should be as accessible as possible, and we will endeavour to keep it this way forever.”

Wellington Free Ambulance’s story started in 1927 when Sir Charles, Wellington’s then Mayor, came across an injured man on Lambton Quay. With the wait for medical help surpassing an hour, he sought to introduce a free ambulance service here as he had seen in his place of birth, New South Wales. Since then, hundreds of thousands of people have received the urgent, often life-saving, care they need.

Data-driven operations

Behind every Wellington Free Ambulance callout is a complex series of data points that are collected, processed and analysed to ensure the best possible outcomes for patients and our communities. Variables such as the number of calls answered and triaged, the time to dispatch and transfer, average kilometres travelled and the proportion of patients treated at home are all aggregated to measure success, determine opportunities to streamline operations and help Wellington Free Ambulance to become “the best little ambulance service in the world”.

By harnessing this data, there is also the opportunity to strengthen Wellington Free Ambulance’s story, says Claire. “We have a rich history, amazing donors and wonderful success stories from both paramedics and patients and their whānau. Introducing social impact metrics provides an opportunity to add another layer to our storytelling.”

Enriching Wellington Free Ambulance’s story

To achieve this, Wellington Free Ambulance engaged social impact organisation ImpactLab with the goal of using this data to quantify social return on investment. “We understand that funders and donors are looking for hard facts on top of human stories,” says Claire. “Through this project, we will be able to accurately communicate just how far a dollar goes.” This is critical, says Claire, to maximise Wellington Free Ambulance’s fundraising efforts and realise its ultimate goal of remaining a free service, just as Sir Charles Norwood envisioned 95 years ago.

Nikau Foundation was delighted to support this important project, providing a grant from the Kevin and Julia O’Connor Endowment Fund.



Image credit: Autism Intervention Trust.

Providing inclusive opportunities for fun and exploration

“It shouldn’t be about autistic children having to change themselves for the world,” says Autism Intervention Trust Chair Julia Ball. “It’s about adapting the world so they can thrive.”

That’s the premise on which the Autism Intervention Trust was built – making everyday activities work for the children they work with. “Autistic children have the same needs as any child. They want to have fun, go to gym classes and holiday programmes. Some children just require a bit of extra support,” explains Julia.

Free-form classes for fun and discovery

Autistic children often experience barriers to participation and encounter challenges with communication and social skills, explains Julia. They often struggle to follow the typical, more rigid format of children’s classes on offer. Acknowledging this, Autism Intervention Trust classes, which take place every Sunday at Capital Gym in Newtown, are play-based and invite children to explore autonomously and have fun without strict parameters. “As long as they’re safe, the children are free to follow their hearts and be their special selves,” says Julia.

The classes are important for parents as well, with many experiencing feelings of isolation. “Parents can often feel out of sync as their children are hitting milestones at different times to their peers,” says Julia.

“It’s fantastic to provide them with an opportunity to meet and spend time with other families who have an autistic child.”

Support to reinvigorate important community activities

A few years ago, numbers for the Autism Intervention Trust’s gym classes were dwindling due to COVID-19 restrictions and a change in gym location. Recognising the many benefits that the classes had, the Trust sought to revive this important community service with help from coaches from Victoria University’s Autism Clinic.

The Trust sought funding to help cover operational expenses for these classes. Nikau Foundation was delighted to support and provided a grant of \$5,680 from the Kāpiti Disability Support Fund.

“The grant gave us breathing room by ensuring our gym fees were paid,” says Julia. “We could then focus on advertising the classes, talking to other organisations in our area and ensuring our class met community needs.”



Promoting social change through the arts



Production still from The Conch production of *A Boy Called Piano* 2022. Image credit: Maeve O'Connell.

“The arts are so much more than performance,” says The Conch Charitable Trust Producer Katherine Wyeth. “They provide valuable opportunities for acknowledgement, healing and representation.”

The internationally acclaimed company was founded 20 years ago by Artistic Director Nina Nawalowalo ONZM and Executive Producer Tom McCrory and has created a platform for the telling of Pacific stories across the globe, presenting theatrical works at over 40 international festivals.

“It is vital for Aotearoa’s stories to be told,” says Nina. “As Pacific storytellers, those are stories that are hidden by the dominant narrative.”

A ground-breaking debut

The Conch’s latest production, *A Boy Called Piano*, explores the journey of Fa’amoana John Luafutu and his experiences alongside thousands of others in state care in the 1960s.

“It is a survivor’s story – told in Fa’amoana’s own voice,” says Katherine. “Its kaupapa is to empower others to recapture their stories and to instigate positive change for children in state care today.”

The live stage show, which has been developed over several years in close collaboration with Fa’amoana and his family, combines highly physical storytelling with stunning audio-visual design and is complemented by a live music score by renowned New Zealand musician Mark Vanilau.

It is the show’s third iteration, preceded by story series in collaboration with Radio New Zealand and a documentary premiered at the 2022 Whānau Mārama New Zealand International Film Festival.

“For many survivors in that room, it was the first time they felt acknowledged and seen.”

The power of acknowledgement

As the credits rolled at the Auckland premiere of *A Boy Called Piano*, a poignant moment of mihi erupted. “This spoke not only to the success of the film but also the importance of Fa’amoana’s story being told,” says Katherine. “For many survivors in that room, it was the first time they felt acknowledged and seen.”

The production is a platform for other stories to be told to bring awareness to the importance of nurturing talented individuals in the system and to demonstrate the pathways out of the intergenerational trauma experienced by so many explains Katherine.

Nikau Foundation was delighted to support The Conch’s live production with a grant of \$2,500 from the Elma Coxon Fund to support operational expenses.



Our community – Kāpiti

When asked why we chose to make the Kāpiti Coast our forever home, I will always come back to one thing – the special, generous people that make up our communities. The coast is known to have a ‘small town, big heart’ feel, which is exemplified most by the amazing not-for-profits that operate here.

This year, there are several milestones of which our Kāpiti Committee is particularly proud. We gave out over \$90,000 to not-for-profits. This included a \$7,000 grant to local clean energy innovator Energise Ōtaki, a \$13,000 grant to complete the refurbishment of the Kāpiti Foodbank and \$7,500 to the Kāpiti Impact Trust to deliver its Bigger Picture Parenting programme. The first-ever grants were also distributed from the Rotary Club of Ōtaki Fund. Realising these milestones has been an incredible feat, and I would like to thank our Kāpiti Committee and local supporters for helping us to achieve them.

I would also like to acknowledge the passing of former Kāpiti Committee Chair Mike Olsen in January 2022. Mike was an incredible leader with a passion for business and making a difference in his community.* Mike was instrumental in building a solid foundation for Nikau’s impact throughout the Kāpiti Coast, and for that, we will always be extremely grateful.

Ngā mihi

Adrian Gregory
Chair, Nikau Kāpiti

* You can read more about Mike’s incredible philanthropic impact on page 17.



Volunteers

- Adrian Gregory**
(Chair)
- Tim Burns**
- Adrienne Bushell**
- Shirley Clarke**
- Sophie Handford**
- Lawrence Kirby**
- Liz Koh**
- Rod Lingard**

Image credit: Energise Ōtaki Charitable Trust.

“Nikau Foundation funding has been so valuable to letting us fill a much-needed gap in our community for whānau resilience, strengthening and development.”

Carole Jowett, Kāpiti Impact Trust



Kāpiti Community Foodbank Chair, Dave Edwards in front of the new relocatable premises.
Photo credit: Kāpiti News.

A permanent home for an important community hub

Kāpiti Community Foodbank Chair Dave Edwards is technically retired, but until the local community had a permanent location for this important social service, he wasn't going to commit to any kind of rest.

The Kāpiti Foodbank in its current form has been a long time coming. “Over the past few years, the Foodbank has had to relocate several times for different reasons, which has been unsettling for volunteers and clients,” says Dave. “Due to increasing demand, it was high time we secured a more permanent home to better serve our community.”

An innovative solution

After brainstorming various solutions, a Kāpiti Foodbank trustee came up with the idea of purchasing a relocatable building. “This meant we could undertake renovations and really make it our own,” says Dave. “It also means that, if we need to move again in the future, it will be as simple as picking the building up and moving.”

The building, a former classroom that sits on a plot of land by Coasters Musical Theatre on Paraparaumu's Hinemoa Street, is kitted out with plenty of storage space, a welcoming reception area and private consultation spaces where volunteers can assess the needs of visitors. “This space plays a key role in welcoming new clients in a dignity-preserving way,” says Dave.

This is necessary now more than ever, he explains, as the Kāpiti Foodbank is welcoming more and more people who have never previously accessed a social service.

“The need for our services is increasing. For many, COVID-19 has caused job losses or reduced working hours, and the rising cost of food and petrol mean many families are facing hardship.”

A coming together of the community

When the Kāpiti Foodbank's ribbon was cut in early September, it was the culmination of months of community backing, thousands in generous local donations and hundreds of volunteer hours. “This project is a result of amazing teamwork and generosity from the community. The Foodbank really defines the term ‘for the community, by the community,’” says Dave.

Nikau Foundation was delighted to support, providing a grant of \$13,000 from the Kāpiti Disability Support Fund and the Richard and Doreen Evans Charitable Trust to refurbish the building.



Image credit: Stuff Limited.

Honouring a life of generosity

When Mike Olsen sat in the Wellington Foodstuffs boardroom in 1973, some wondered what he was doing there. He was 27, the youngest board member in their history, and he had many ideas to put forward.

Mike had always been in the grocery business, working in the Four Square owned by his father Bons from a young age. He would go on to be the owner of his father's shop and was later approached to be a founding partner of Pahiatua New World at age 25. "Many thought he wouldn't succeed," says Mike's wife Margaret, "but he was determined, and his vision was to go big!" He went on to own the New World in Pahiatua in partnership for 11 years, building a successful business and then moving onto Dannevirke New World followed by the Kāpiti PAK'nSAVE.

A natural knack for leadership

His professional success, says Margaret, can be attributed to Mike's leadership approach. "Mike was a natural communicator and people person. He could recognise and nurture potential in people." Throughout his time owning supermarkets, Mike mentored hundreds of people, many of whom then went on to hold leadership positions and own their own supermarkets. It was from his own experience with the Jaycees, where he undertook several leadership courses, that he knew the transformative power mentoring could have in the lives of young people.

Giving back to the community

Passionate about the development of Kāpiti, his home for over 30 years, Mike became Chair of Nikau's Kāpiti Committee soon after it was established. In this role, like all his others, Mike displayed exemplary leadership qualities, helping Nikau to develop a local footprint. "Mike was strategic," says Kāpiti Committee member Adrienne Bushell. "He knew where we needed to go and how we were going to get there."

Mike was also committed to ensuring that youth could benefit from mentoring long into the future through the establishment of the Mike and Margaret Olsen Fund with Nikau. "Not everyone has positive role models in their life like I did," Mike said when the fund was established in 2017. "I wanted to do something that enabled every young person to see their potential and set them on the path to becoming a future leader." Since then, the fund has supported students from Raumati South School to undertake the William Pike Challenge.

Mike passed away in January 2022 after a short illness. His funeral was filled with people who had played a part in Mike's rich life. Former employees spoke passionately of Mike's influence, encouragement and leadership. It was a fitting testament to a lifetime of service to others.



Our community – Porirua

There are many reasons why I love living in Porirua. It’s full of incredible people – people who will go above and beyond to help someone in need, who will turn up at your door with a home-cooked meal or organise a fundraiser to benefit our communities.

Our Nikau Porirua Committee is no exception. Each with busy lives and multiple volunteer commitments, Committee members consistently bring their knowledge, energy and passion to ensure organisations and initiatives receive funding to help them grow and effect positive change in our area. My sincerest thanks to each and every one of you.

This year, we were thrilled to give out 41 grants to organisations working throughout Porirua. These included grants given to Kura Kai, which is distributing nutritious meals to four local high schools, Project Jonah to cover local marine mammal medic training costs for Ngāti Toa iwi and Ngā Uri o Whiti te Rā Mai Le Moana Trust to assist with operational expenses at Le Malaga o Moanaroa youth hub.

Since 2019, we have distributed more than \$640,000 to our Porirua communities from the Porirua Fund. Although, after five exciting years in the position as Chair, I will be passing on the role to another passionate local, it is a comfort knowing that, due to the community foundations model, the Porirua Fund will continue to give back to local causes long into the future.

Ngā mihi

Rebecca Morahan
Chair, Nikau Porirua



Volunteers

Rebecca Morahan
(Chair)

Colin Bleasdale

Eleanor Cater

Izzy Ford

Jess Reiher

Sue Shotter

Ranei Wineera-Parai

Image credit: Growing Places Charitable Trust

“This pūtea/funding has helped with our ever-increasing operational costs in running and coordinating Kura Kai in this region, and as a consequence we were able to connect in with more community organisations, increase our volunteer network and share our Kura Kai kaupapa on our online platforms.”

Marie Paterson, Kura Kai.



Image credit: Ngā Uri o Whiti Te Rā Mai Le Moana Trust.

A hub to connect, support and empower youth

Poipoia te kākano kia puāwai. Tausi le fatu na totō ina ia tupu ma ola matagofie. Nurture the seed and it will blossom.

The opening of Le Malaga o Moanaroa may have taken place on a cool, decidedly grey day, but the proceedings were peppered with vibrant colour, a spirited kapa haka performance and deeply moving speeches. Much more than just a ribbon-cutting ceremony, the opening of this inclusive youth hub is a coming together of the community rallying in support for Porirua's youth.

The result of many years of hard mahi, the hub was initially conceptualised by trained teacher Saviiey Aliiva'a Nua when studying for her Master of Education on solutions for positive youth development. At the time, there were no spaces dedicated to rainbow youth, who often had to travel long distances to Wellington city to receive the pastoral and emotional support they required.

"When I was a schoolkid in Porirua, I felt there was nowhere to go," says Saviiey. "Having grown up, graduated and studied some years on, there still wasn't anything – so I sought to change that." The hub became a project of Ngā Uri o Whiti Te Rā Mai Le Moana Trust, of which Saviiey is Chair.

Embodying its name, which means 'the journey of Tagata Moana', symbolising the oneness and connection we all have through shared oceans, the hub, which welcomes all, aims to bring youth together to promote belonging, the arts, education, professional development and community service.

The space is purposefully open plan to inspire collaboration and the discovery of new interests and is adorned with fun decorations. "Our hub doesn't belong to us, it belongs to the youth who hang out here," says Saviiey. "It is not up to us to decide what is a safe space – our young people create safety through being here, making friends and making it their own."

Nikau Foundation was honoured to support Le Malaga o Moanaroa's operating expenses, providing a grant of \$7,000 from the Tindall Foundation.

"It is not up to us to decide what is a safe space – our young people create safety through being here, making friends and making it their own."



Members of Ngāti Toa iwi and DOC staff undertake marine mammal rescue training at Titahi Bay, Porirua.

Inspiring kaitiakitanga for marine life and Aotearoa New Zealand’s coastline

Owing to our extensive, jagged coastline and prime position between tropical and Antarctic whale migration paths, New Zealand has the highest rate of marine mammal strandings in the world.

“We average around 300 whale and dolphin strandings a year,” says Project Jonah Communications and Volunteer Manager Louisa Hawkes.

Leaders in marine mammal conservation

Project Jonah started in 1974 when a group of keen conservationists marched on Parliament to protest commercial whaling. Their activism prompted the New Zealand Government to rejoin the International Whaling Commission in 1976 (voting against all forms of commercial whaling) and formed the basis for the Marine Mammals Protection Act 1978.

Since then, Project Jonah has gone on to design whale rescue pontoons used worldwide and sit on international expert panels for marine rescue science. “For an organisation with only two full-time staff members, we really are punching above our weight,” says Louisa.

As soon as a report of a stranding comes in on their 24-hour hotline, the Department of Conservation (DOC) is notified and a text with the nature, location

and scale of the event goes out to some of Project Jonah’s 4,500 volunteers. “We have volunteers based all over Aotearoa so often we can respond to events even faster than DOC staff,” says Louisa. All volunteers are trained to deliver essential first aid to stranded or injured marine mammals, including whales, dolphins and seals, but also help with other conservation tasks such as rubbish removal from beaches.

The importance of education

It is Project Jonah’s belief that, if people have a greater understanding of marine mammals, they are more likely to create better outcomes for them. “To build understanding, education is key – so we provide this to local schools and communities,” says Louisa.

In December 2021, Project Jonah ran a training course for DOC staff and representatives of local iwi. “Complementing mātauranga Māori, this training aims to build specialist response skills and empower local mana whenua when responding to future events,” says Louisa. This training was so successful that Project Jonah sought further funding to offer this training to representatives of Ngāti Toa.

“It can be so difficult to secure funding for training initiatives. We are so grateful to have support from Nikau Foundation,” says Louisa.



Our community – Wairarapa

2022 was an extremely exciting year for Nikau Foundation in the Wairarapa. After plenty of generous local support and fundraising, we were able to distribute the first-ever grant from the Nikau Wairarapa Fund. This grant went to Yellow Brick Road, an organisation working to provide families with the tools, resources and knowledge they need to support a loved one experiencing mental health challenges.

Locally, we were also delighted to support many organisations, including Digital Seniors, which is working to improve digital competency in older communities, Ruamahanga Charitable Trust, which is engaging youth in environmental conservation projects, and foodbanks in Featherston, Masterton and Carterton, which are ensuring families are well supported in the face of financial and food insecurity.

This year, we were honoured to be chosen as the guardian of St Matthew's Old Girls' Association Fund. This fund is dedicated to help students reach their potential in the spirit of the school's motto 'Ad astra per aspera – to the stars through endeavour'.

Although it is time to hand over my role to new Nikau Wairarapa Committee Chair John Gilberthorpe, I would like to sincerely thank our Committee members, network of generous local donors and supporters for your incredible support and work in 2022. It has been the ultimate pleasure to help our Wairarapa communities through volunteering at Nikau, and I am excited to see what is next for our region.

Ngā mihi

Lucy McLaren

Chair, Nikau Wairarapa



Volunteers

Lucy McLaren (Chair)

Sally Adams

Barbara Durbin

Anne Hannah

John Gilberthorpe

Bevan Morland

Wendy Morrison

Image credit: Te Kura o Papatūānuku Wairarapa Earth School

“Nikau Foundation funding allowed us to employ a part-time garden teacher/coordinator who was able to run workshops for schools and maintain our teaching garden for schools and community members to visit and learn in.”

Emilie Neubauer, Te Kura o Papatūānuku – Wairarapa Earth School



Image credit: Digital Seniors.

Supporting older generations to navigate the digital world

When Digital Seniors CEO Cathy Hardinge undertook her master's degree on digital exclusion, there was one topic that came up over and over in her research. The digital divide was particularly prevalent with people aged over 65, and at the time, there were very few services available to help older people to upskill.

“These days, it is near-on impossible to avoid technology. This is particularly so since cheques were phased out and more and more services have transitioned online. The need to have some level of digital competency is at an all-time high,” says Digital Seniors Team Lead Niki Jones.

Hands-on help to build confidence and connect

The Wairarapa region has the highest percentage of older people in the country and one of the largest rates of social isolation reported in seniors nationwide, so it made sense that Digital Seniors' first services were launched in the region. Since 2018, Digital Seniors has provided free help to thousands of older people covering more than 13,000 technology-related topics. Delivered from community hubs, via house visits and online from Masterton to Cape Palliser, these topics range from downloading apps to using online banking to Zoom 101.

“Technology offers so many opportunities – to access basic services and entertainment, connect socially and keep up to date with news,” says Niki. “However, there can be a lot of fear and hesitation to engage with it.”

Acknowledging these barriers, Digital Seniors' approach is trust-based and tailored to the individual. “We're all about relationship building – we know that, when someone trusts their coach, they are far more likely to feel confident with trying new things and will persist until they say ‘I've got it!’”

Primed for growth

Through the success of its pilot, Digital Seniors now runs five hubs throughout the Wairarapa. They are a place for both learning and social connection, says Niki, and are instrumental to their effectiveness. Acknowledging this, Digital Seniors sought funding for operational costs and to help expand its services into retirement villages.

Nikau Foundation was delighted to assist with a \$3,500 grant from the Margaret Neave Endowment Fund.



Image credit: St Matthew's Collegiate School.

Helping students to unlock their potential forever

Ad astra per aspera – to the stars through endeavour

Nestled down a quiet road in Masterton, St Matthew's Collegiate School has a long history of educating confident, resilient and successful young women.

Established in 1914, St Matthew's educational vision was largely influenced by Founder Miss Ella Hampton, who was determined to create new opportunities for women at a time where paths and expectations were limited.

More than 100 years later, her spirit and attitude is still reflected in the ethos of St Matthew's and is echoed in the school's motto 'Ad astra per aspera – to the stars through endeavour'.

With a mission to support students in a variety of ways, St Matthew's Old Girls' Association was formed in 1931. Since its establishment, the Association has spearheaded several significant projects such as purchasing a disused church to be used as the school chapel, which was transported from Turakina to the school's Pownall Street site in 1985, developing gardens and preserving the school's long history through a photo archive that hangs proudly in the school's hallways and foyers.

Focusing on unlocking potential, the Association also facilitates grants that provide financial assistance for a daughter of an old girl to pursue their education at St Matthew's and offer opportunities to undertake a life-changing voyage on youth development experience *Spirit of Adventure*.

In late 2021, St Matthew's Old Girls' Association was looking for a way to ensure more certainty in the support they were providing students, with a focus on protecting the future of grants.

"Establishing the St Matthew's Old Girls' Association Fund with Nikau Foundation means ensuring long-term support for our students," says Association President Amanda McLeod. "The fund will make sure that St Matthew's students will continue to have opportunities to grow, upskill and continue to pursue their education."

Nikau Foundation Executive Director Emma Lewis says, "We are delighted to be working with St Matthew's Old Girls' Association to make sure that students can unlock their potential and nurture the next generation of leaders."



Our community – Wellington

As the capital city’s community foundation, we are at the centre of governmental decision making and are surrounded by individuals and organisations enlivened by a spirit of social responsibility and drive to effect positive change.

Like our namesake the nīkau palm, our foundation is versatile and has deep roots in our community. We are flexible and adaptive, listening to the needs of our community and our donors so that we can support great mahi in the most sustainable and meaningful ways.

The establishment of the Nikau Wellington Committee is just the next step in ensuring we are connected to our local community and have a deeper understanding of the challenges facing our communities so that we, as a funder, can support most effectively. We work directly with donors to understand where their interests and passions lie to ensure that their donation effects positive community change.

Although the Wellington Committee is in its infancy, it is our goal to engage passionate individuals to help us on our journey and spread the word of Nikau Foundation. Together, we are working to build long-term reliable funding streams to support the people and places of Wellington.

Ngā mihi

Jessica Beyeler
Chair, Nikau Wellington



Volunteers

Jessica Beyeler
(Chair)

David Kneebone
Adrienne Olsen

“Funding from Nikau Foundation supports those in our community who are facing poverty, deprivation and homelessness by providing them with access to support our most basic human needs, while at the same time creating community and connection between volunteers and friends who use the service.”

Katie Hart, Orange Sky New Zealand

Michael and Suzanne Borrin Foundation



The Michael and Suzanne Borrin Foundation provides support for legal research, education and scholarship.

Founded by the late Judge Ian Borrin in memory of his parents Michael and Suzanne, the Michael and Suzanne Borrin Foundation believes that law is essential to a flourishing society and works towards an Aotearoa New Zealand that is just, inclusive, tolerant and free. The Foundation's areas of focus are criminal law, family law and access to civil justice.

Nikau Foundation is the sole trustee of the Borrin Foundation and works collaboratively with the Grants and Scholarships Committee – established in accordance with the Borrin Foundation trust deed.

A look back on 2022

This year has been a significant one for the Michael and Suzanne Borrin Foundation with us funding 36 new projects designed to have a long-term impact, and in 2022, we supported nine individuals within the legal community who will contribute to our shared vision of Aotearoa New Zealand. It has also been a time for change and growth at the Foundation.

In April, the Grants and Scholarships Committee (GSC) welcomed two new GSC Advisors – Auckland lawyer Kingi Snelgar as Criminal Justice Advisor and Wellington lawyer Ataga'i Esera as Family Law Advisor. We have also welcomed two new GSC Members who have recently been appointed to their roles – Frazer Barton, President of the Law Society, and Professor Lee Goden, Dean of the Law Faculty at Te Herenga Waka,

Victoria University of Wellington. We are grateful for the expertise our Advisors and Members bring to the Foundation.

At the operational level, we were delighted to welcome Oliver Malthus to the newly created position of Scholarships and Engagement Associate and Jan Ryan to the position of Grants and Operations Coordinator. These roles place us in a strong position for supporting our grantees and applicants and deepening our engagement across the legal community.

Since 2017, the Foundation has committed almost \$8 million to support Aotearoa New Zealand to make a difference to the lives of New Zealanders through the law. We are so pleased to see the positive impact that Judge Ian Borrin's generosity is having in the community and look forward to continuing to contribute to innovative solutions for systemic change through future funding.

The findings of research completed in 2022 can be found on the Foundation's website www.borrinfoundation.nz.

Ngā mihi nui

Tupe Solomon-Tanoa'i
Chief Philanthropic Officer, Michael and Suzanne Borrin Foundation

Highlights for 2022

Te Rauhi i te Tikanga – A Tikanga Companion

The first stage of this project in designing a rich digital resource, a 'companion', to assist those in the learning, teaching and practice of law in Aotearoa New Zealand to understand how tikanga Māori operate as legal norms for Māori communities and how those norms can and do interact with the legal system.

Towards Transformative Restorative Justice for Pacific Peoples in Aotearoa New Zealand

This project will explore how restorative justice initiatives, including Family Group Conferences (FGCs), can be strengthened and improved for Pacific peoples, who are disproportionately convicted of criminal offences and imprisoned in Aotearoa New Zealand.

Rainbow Rights Conference

We are supporting Te Kāhui Tika Tangata New Zealand Human Rights Commission to host a conference for rainbow and takatāpui communities on rainbow rights in Aotearoa New Zealand.

Relationship Property Division in New Zealand – Research Highlights

A series of highlights that draw on key findings from a socio-legal research project aimed at assisting separated people to divide their property following the end of a relationship in New Zealand.



Mark Dunajtschik and Dorothy Spotswood.
Image credit: Stephen A'Court.

An enduring gift for the city Mark helped to build

“I made my money in Wellington, and I plan to leave it here when I go,” says Wellington property developer and committed philanthropist Sir Mark Dunajtschik.

For those who know Sir Mark, these plans will come as no surprise. Sir Mark, together with his life and business partner Dorothy Spotswood, has a long history of giving back to our city. From being an early supporter of the Michael Fowler Centre and what is now the Life Flight Trust to the new Wellington Regional Children’s Hospital Ta Wao Nui in Newtown and, most recently, a commitment to fund a mental health unit at Hutt Hospital, it’s difficult to walk down the street without passing a tactile reminder of the couple’s generosity.

This impressive drive to give back was seeded in Sir Mark’s childhood. A native German born in the former Yugoslavia, Sir Mark spent three of his formative years imprisoned in a WWII concentration camp before settling in Germany as a refugee. Finding work as a tool maker, Sir Mark stayed in accommodation that also housed people with disabilities while he completed his apprenticeship. It was the combination of these two life-changing experiences that brought Sir Mark’s attention to those less fortunate and set the scene for a lifetime of philanthropy.



Hands-on philanthropy

From his professional beginnings as a tool maker to becoming a heavy hitter in Wellington's property development industry, Sir Mark's working style is emblematically hands on. In fact, seeing him halfway up a ladder replacing a light bulb or pacing down Featherston Street to let the electrician in would not be uncommon.

His approach to philanthropy is similar. "Sometimes 'philanthropy' is seen as writing a cheque and walking away, but I've never been like that," says Sir Mark. For Te Wao Nui, this meant commissioning private construction contractors to expedite the project, and for his philanthropic succession plan, it meant proactively finding a safe pair of hands to carry on his legacy.

A safe pair of hands

Creating a legacy is always something that Sir Mark planned on doing. "Dorothy and I have had our bit in life, so now we want to make sure our good fortune is passed on to others," he explains.

But Sir Mark had a specific vision in mind and wanted to make sure he found the perfect strategic partner to execute his giving goals.

His number one criterion? His estate had to stay in the Greater Wellington region. "Wellington has been my home for nearly 60 years. This place gave me my first leg-up in life, and I wanted to reinvest in the city that made me," says Sir Mark.

He also wanted his legacy to have an enduring impact. "The last thing I wanted was to donate the money only for it to be spent down within a few years. It needed to have staying power and continue to give back for years after I've kicked the bucket."

As the Greater Wellington region's community foundation, Nikau Foundation was a great fit for Sir Mark's future giving goals. "I had been following Nikau for a number of years – since the Foundation had only one fund on the books. Nikau is focused on local, and I trust them implicitly to give in the way I want."

Giving people a step up

Consistent with many of his philanthropic endeavours to date, Sir Mark's gift will provide practical support to people living with disability. "I always say that people born with good health can make their own way, but some are in need of a bit of extra help."

With deep roots in the community and a robust corporate trusteeship offering, Nikau Foundation was perfectly placed to honour Sir Mark's vision. "We are so proud to be chosen as the guardian of this incredible gift to Wellington," says Nikau Foundation Chair Dame Fran Wilde. "It is an honour to continue Sir Mark's legacy in this incredibly meaningful way."

An enduring impact

Sir Mark has made an enduring commitment to our region by leaving a bequest to establish a foundation in his name. Once operational, grants will make a transformational difference in the lives of the people it is designed to benefit. "We are so proud for this opportunity to come to fruition and acknowledge the people who have helped us get to this point. We are delighted to be working with Sir Mark to shape what will become The Mark Dunajtschik Foundation," says Nikau Foundation Executive Director Emma Lewis.

"Mark and Dorothy have a very clear vision," says Emma. "We are privileged to be playing a role in ensuring this is realised, long into the future."

As you wander around the city, look up. This is the city that Mark helped to build, and this is where his legacy will continue to make a difference forever.

From Community Foundations of New Zealand



The Community Foundations of New Zealand smarter giving model has captured the imagination of donors across Aotearoa. We hear donors say, “Why give once when your giving can effect positive change for our communities forever?”

New Zealand is now experiencing the greatest intergenerational wealth transfer in modern history and so expanding generosity that delivers impact and transforms communities is critical for our collective futures.

It is such a profound privilege for community foundations like Nikau Foundation to partner with donors and help them connect with causes they care about and effect the good they dream of seeing.

2022 has been a significant year for Community Foundations of New Zealand. Collectively, community foundations in Aotearoa are now the guardian of over \$230 million with a further \$870 million committed as bequests. These gifts are life changing and will have a positive, lasting effect on our communities.

In May, we were honoured to welcome Governor-General Dame Cindy Kiro as our patron. This is testament to the momentum Community Foundations is gaining, affirming our position as a powerful vehicle for generosity across Aotearoa. We also held our national conference in early 2022, bringing together all 17 community foundations to share ideas and knowledge and lay the foundations for our next chapter – focused on growth, community-centric development and social impact.

Hei whakakaha, i ngā hāpori o Aotearoa speaks to strengthening the communities of Aotearoa New Zealand together. I acknowledge the wonderful mahi of Nikau Foundation over the past year and the way you have so diligently, and successfully, connected local generosity with local community aspirations.

A handwritten signature in blue ink, appearing to read 'Arron Perriam'. The signature is fluid and cursive, with a long vertical stroke at the beginning.

Arron Perriam
Executive Director

Community Foundations of New Zealand

Positioning for growth

Over the last few years, Nikau Foundation has grown considerably. We are now the guardian of almost \$32 million and have evolved from a small, self-managed not-for-profit to a medium-sized institutional investor.

In late 2021, Nikau put out a Request for Proposal to a wide range of New Zealand-based fund managers. Following a thorough review, we chose to partner with Craigs Investment Partners and Harbour Asset Management.



Craigs Investment Partners

Craigs Investment Partners is one of New Zealand's largest investment advisory and management firms, offering investment advice to private, corporate and institutional clients since 1984. With a focus on the long term, a track record of strong investment returns and emphasis on social and environmental responsibility, Craigs mirrors Nikau's growth aspirations and organisational values.

Nikau Foundation's investments are jointly advised by Melika King and Andrew Cathie, supported by Craigs Specialised Wealth Advisory Team. Melika has been with Craigs since 2006 after having worked for several companies in the finance industry both locally and internationally, including UBS Investment Banking in London. Andrew joined Craigs in 2001 after working for Forsyth Barr locally and the Bankers Trust and Warburg Dillon Read in London. Melika and Andrew work alongside other national charities and have been trustees on charitable organisations.

Nikau Foundation Executive Director Emma Lewis says, "Craigs really impressed us, not only with its sound approach to investment but also the value it places on social and environmental responsibility and effecting long-term change for our communities. Craigs really embodied what we were looking for."

Harbour Asset Management

Harbour Asset Management is a Wellington-based institutional fund manager managing more than \$7.1 billion for a variety of clients, including charitable trusts, community trusts, iwi, Crown financial institutions and superannuation schemes. With a track record of strong investment returns and organisational commitment to create better outcomes for our local communities, Harbour perfectly aligned with Nikau Foundation's growth and giving aspirations.

Nikau Foundation's investments will be principally advised by Multi-Asset Strategy Portfolio Manager Chris Di Leva. A lifelong resident of Wellington, Chris has many years' experience in investment manager research, dynamic asset allocation and structuring investment portfolios for some of Aotearoa New Zealand's largest institutional investors.

Nikau Foundation Executive Director Emma Lewis says, "Harbour clearly demonstrated proven investment returns, stringent responsible investment practices, thorough reporting and a kaupapa to effect positive change for our communities."

Nikau Foundation
Statement of Financial Performance
For the year ended 30 September 2022

Account	30 Sep 2022	30 Sep 2021
	\$	\$
Income		
Total Income – Operating	697,015	736,494
Total Income – Endowment	3,644,159	12,200,726
Total income	4,341,174	12,937,220
Expenditure		
Total Expenditure – Operating	688,664	663,725
Total Expenditure – Endowment	1,366,242	968,787
Total expenditure	2,054,906	1,632,512
Total Surplus for the Year	2,286,268	11,304,708
Endowment Account		
Income		
Endowments Received	5,893,283	8,246,778
Investment Income	1,783,065	1,067,274
Investment Revaluation	(4,032,189)	2,886,674
Total income	3,644,159	12,200,726
Expenditure		
Grants and Donations	785,313	576,395
Investment Property Expenses	181,119	87,368
Trustee and Portfolio Management Fee	399,809	305,024
Total expenditure	1,366,242	968,787
Surplus from Endowment Account	2,277,917	11,231,939
Operating Account		
Income		
Donations and Sponsorship	36,725	117,725
Endowment, Grant Distribution and Corporate Trustee Fees	653,657	615,453
Interest Received	6,633	3,316
Total income	697,015	736,494
Expenditure		
Audit Fee	12,130	10,350
Depreciation	1,644	1,131
Insurances	9,100	6,385
IT Expenses	37,391	28,224
Office Expenses	52,905	52,043
Professional Fees	17,795	50,620
Promotion, Publicity and Events	22,230	31,965
Volunteer and Employee Related Costs	516,195	464,196
Other Expenses	19,275	18,811
Total expenditure	688,664	663,725
Surplus from Operating Account	8,351	72,769

Financials

Nikau Foundation continued to grow in the 2022 financial year, despite the current global economic challenges and adverse market conditions that impacted investment returns. Nine new funds were established during the year with a value of \$5.9 million, the most significant of which were the O’Dea Illingworth Fund, the Roy and Jan Mace Fund and The Edith Spratt Fund, with a further two funds committed.

Many of our existing endowment funds also received new donations, increasing their balances during the year. The Foundation ended the year with total funds of \$32.5 million – an increase of 8%. The accounts of Nikau Foundation are split internally into operating and endowment ledgers, effectively ring-fencing donated endowment investments from Nikau’s operating resources. This split is presented in this Impact Report to demonstrate the performance and position of each. The Performance Report, however, shows a combined view in order to comply with Tier 3 financial reporting standards. The signed Performance Report received an unmodified audit opinion from KPMG and is available on the New Zealand Charities Services and Nikau Foundation websites.

Endowments

The endowment surplus of \$2.3 million relates to new endowment funds set up during the year (totalling \$5.9 million), which were partially offset by negative investment returns of \$2.2 million and expenses of \$1.4 million (\$0.8 million of these expenses were grants paid from endowment funds).

The Foundation’s negative investment returns relate mainly to the performance of the managed funds portfolio, which was impacted by global market downturns across all asset classes. Factors such as monetary policies, inflationary pressures and the war in Ukraine have all impacted returns in the 2022 financial year. Market fluctuations are a normal and expected occurrence, and as Nikau Foundation exists in perpetuity, we have the advantage of time – meaning we can ride out volatility and focus on the long-term performance of our investments.

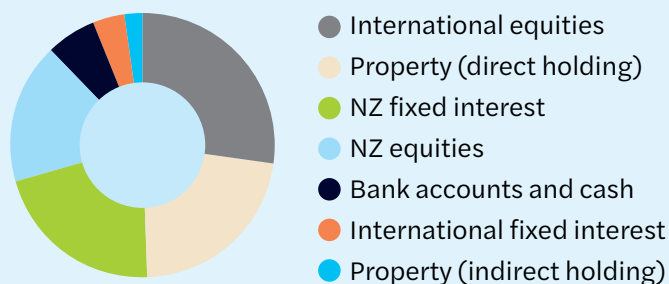
In April 2022, the Foundation appointed Craigs Investment Partners and Harbour Asset Management to manage its managed funds portfolio. The Foundation also updated its Statement of Investment Principles and Objectives during the year to ensure an optimised portfolio performance during these challenging times.

The majority of the endowment funds (75%) are held in a balanced portfolio (60% growth assets, 40% income assets), with the remaining 25% invested in real estate, which is leased to the MASH Trust – a non-profit providing services for people with mental health conditions, disabilities, alcohol and addiction struggles and youth respite care. The Foundation’s direct property holding decreased during the year due to the sale of Sandbar on Mana Esplanade. The proceeds from

Nikau Foundation Statement of Financial Position As at 30 September 2022

this sale were reinvested in the Foundation's managed funds portfolio. The market valuation of the remaining property decreased by \$0.8 million at year end.

Nikau Foundation's investment breakdown is illustrated in the pie chart below.



By the end of the 2022 financial year, the Foundation had 69 endowment funds under management with a value of \$31.9million, and a further six funds committed. This is up from 66 funds last year, which totalled \$29.7million.

A management fee is charged by Nikau Foundation's administration fund to its endowment funds. This internal fee supports the oversight of the Foundation's investments, the general management of the Foundation's activities and the Foundation's critical grant-making function. The latter requires a significant amount of staff time and resource. The fee amounted to \$296,933 for the year. Whilst it is an internal charge for financial reporting purposes, it is shown in these reports as expenditure in the endowment account and income in the administration account.

During the year, Nikau Foundation distributed \$785,313 (2021: \$576,395) of grants from endowment funds and \$248,557 (2021: \$326,439) of pass-through grants, totalling \$1,033,870. In total, we gave out over 200 grants to organisations and individuals throughout the Greater Wellington region.

Operations

The operations account shows a surplus of \$8,351 for the year. This is a decline of \$64,418 on last year, which can be attributed to a decrease in operational income (\$39,479) and costs associated with futureproofing the Foundation through staff resourcing and IT upgrades (\$24,939). This surplus is held for operational purposes. This is not available for granting and will only be used for future projects undertaken by the Foundation.

The net result is an increase in operating accumulated funds from \$547,516 to \$555,867, which represents 70% of the next year's budgeted operating expenditure.

Denisa Calian
Chief Financial Officer

	30 Sep 2022	30 Sep 2021
	\$	\$
Assets		
Bank accounts and cash (admin)	262,671	411,832
Bank accounts and cash (endowment)	1,902,735	90,740
Debtors and prepayments (admin)	104,404	148,441
Debtors and prepayments (endowment)	2,000,522	6,485
Other current assets (admin)	400,000	250,000
Total Current assets	4,670,332	907,497
Non-current assets		
Fixed assets (admin)	18,480	1,721
Investments (endowment)	21,193,354	19,950,842
Investment properties (endowment)	6,886,000	9,654,000
Total Non-current assets	28,097,834	29,606,563
Total Assets	32,768,166	30,514,060
Liabilities		
Current liabilities		
Creditors and accrued expenses (admin)	191,201	235,571
Employee costs payable (admin)	38,488	28,906
Other current liabilities (endowment)	53,552	50,925
Total Current liabilities	283,240	315,402
Total Liabilities	283,240	315,402
Net Assets	32,484,926	30,198,658

	30 Sep 2022	30 Sep 2021
	\$	\$
Accumulated funds		
Operating funds	555,867	547,516
Endowment funds	31,929,059	29,651,142
Total Accumulated Funds	32,484,926	30,198,658

This statement should be read in conjunction with the Performance Report.

Note: Nikau Foundation's 2021/2022 Performance Report (audited accounts) can be downloaded from nikaufoundation.nz/financials-and-policies



2022 grants

Image credit: Zeal Education Trust.

ANM = Animal welfare **ART** = Arts **CAY** = Children and youth **COM** = Community **ENV** = Conservation and environment
DSB = Disability **EDU** = Education and research **FAM** = Family/whānau **HEA** = Health **HOM** = Homelessness **MĀO** = Māori
MHE = Mental health **PCA** = Pasifica **OGE** = Older generations **RAI** = Rainbow **RMI** = Former refugees and migrants
SPO = Sport and recreation **WOM** = Women

Organisation name	Grant description	Amount	Fund (\$)	Area
1st Karori Scouts	Operational support for equipment upgrade.	5,695	Zac Pearson	COM
A ActionStation Aotearoa Ltd.	Operational support for Kaitiakitanga stream research project.	5,000	Nikau Porirua	ENV
Age Concern Kāpiti Coast Inc.	Operational support to create an accessible hub for older people.	2,500	Evans	OGE
Age Concern Wellington Inc.	General operational support.	1,000	Nikau Community	OGE
Age Concern Wellington Inc.	Salary support for community support worker role.	7,472	Margaret Neave	OGE
Āhuru Mōwai Trust	Support to deliver Awesome Bounce programme.	7,500	Nikau Porirua	DSB
Anglican Diocese of Wellington	Purchase of groceries for community foodbank.	5,000	Nikau Porirua	COM
		1,400	Eva and Johannes Schellevis	
Arthritis NZ (Kaiponapona Aotearoa)	Support to deliver Porirua Gout Improvement Project.	5,000	Wise	HEA
Asert-Tatou Development Trust	Operational support for Te Rito garden.	10,000	Nikau Porirua	DSB
Atafu Tokelau Community Group Inc.	Operational support to cover community facility utility costs.	7,500	Nikau Porirua	FAM
Autism Intervention Trust	Support to deliver gym class programme.	5,680	Kāpiti Disability Support	DSB
Autism NZ Inc.	Salary support for outreach coordinator role.	7,500	Kevin and Julia O'Connor	DSB
B Big Brothers Big Sisters Wellington	Operational support to cover youth mentoring programme costs.	3,000	HP & MC Scott	CAY
Big Buddy Mentoring Trust	Operational support for male mentoring programme.	2,500	Margaret Neave	CAY
Birthright Hutt Valley Trust	Operational support for volunteer koha.	4,000	Anonymous	COM

Birthright Wellington Inc.	Operational support for office rental costs.	2,000	Jessie, Elma and Adam Coxon	COM
		1,100	Robson	
Blind Low Vision NZ	Operational support for Wellington service centre.	8,395	Freeman	DSB
Blind Low Vision NZ	Salary support for recreation and volunteer coordinator roles.	2,600	Willows	DSB
		3,350	Wise	
Bowel Cancer NZ Inc.	Operational support to support bowel cancer patients.	7,500	Kevin and Julia O'Connor	HEA
Breast Cancer Foundation NZ	Support to deliver breast cancer support and education programmes.	5,000	Kevin and Julia O'Connor	HEA
C Cancer Society of NZ Wairarapa Inc.	Support to deliver counselling programmes.	4,000	Evans	COM
		2,000	Wise	
Cancer Society of NZ Wellington Inc.	Operational support for creative volunteers and building maintenance costs.	8,000	Evans	COM
		2,000	Jessie, Elma and Adam Coxon	
Carter Society Inc.	Purchase of shower trolley for the Bill Monk extension.	5,000	Carterton District	HEA
Carterton Community Food Collaborative Inc.	COVID-19 Response Grant 2022.	1,300	Margaret Neave	COM
Challenge 2000 Trust	Support for foodbank volunteers.	4,000	Anonymous	COM
Chamber Music NZ Trust Board	Event support for NZCT Chamber Music contest.	5,000	Judith Clark	ART
ChangeMakers Resettlement Forum Inc.	Operational and salary support for Porirua team.	5,000	Tindall	RMI
ChangeMakers Resettlement Forum Inc.	Support to deliver Turning the Curve driving programme.	2,000	Craigs Investment Partners Wellington	RMI
Citizens Advice Bureau Petone Inc.	Operational support for administration costs.	3,500	Jocelyn Vogel	COM
Citizens Advice Bureau Porirua Inc.	Salary support for office manager role.	14,500	Nikau Porirua	COM
Citizens Advice Bureau Wellington Inc.	Operational support to improve outreach initiatives.	3,500	Anonymous	COM
Coming Home/Nau Mai Tau Mai Community Trust	Support to deliver Arohata Women's Prison Hauora and Healing programme.	2,500	Nikau Porirua	WOM
Crohn's & Colitis NZ Charitable Trust	Support to deliver Camp Purple Live 2022.	3,830	Willows	HEA
Cycle Safe Porirua	Purchase of equipment for cycling clinics.	10,000	Nikau Porirua	HEA
D Dementia Wellington Charitable Trust	Operational support for dementia community services.	10,000	Nikau Porirua	HEA
Digital Seniors	Operational support for senior digital competency programmes.	3,500	Margaret Neave	OGE
Downtown Community Ministry Wellington Inc.	Support to deliver harm-reduction programme.	5,000	Tindall	HOM
E Ekta NZ Inc.	COVID-19 Response Grant 2022.	2,000	Margaret Neave	COM
Ekta NZ Inc.	Purchase of basic groceries and milk for foodbank.	5,000	Margaret Neave	COM
Emma Rose	Scholarship to support youth leadership and education.	5,000	Win Hastings	EDU
Energise Ōtaki Charitable Trust	Salary support for coordinator and project support roles.	7,000	Evans	COM
English Language Partners NZ Trust	Salary support for Wellington, Lower Hutt and Porirua centre coordinator roles.	1,500	Eva and Johannes Schellevis	RMI
		3,500	Nikau Porirua	

“Funding from Nikau Foundation has helped us enhance our in-school programmes so we can provide a better connection and experience for our young people.”

Linda Wilson, Zeal Education Trust

	English Language Partners NZ Trust	Salary support for English language tutor roles in Kāpiti.	5,000	Kevin and Julia O'Connor	RMI
F	FASD-CAN Inc.	Support to deliver fetal alcohol spectrum disorder support programmes.	3,000	Jessie, Elma and Adam Coxon	COM
	Featherston Foodbank	Operational support for foodbank.	1,300	Margaret Neave	COM
	Featherston Menz Shed Inc.	Purchase of materials to build a veranda for shed.	4,000	Margaret Neave	COM
	Forest & Bird	Purchase of nursery equipment and supplies.	1,815	Leseberg	ENV
			584	Milne	
	Foster Hope Charitable Trust	Purchase of backpack and flatpack costs.	4,000	Anonymous	CAY
	Foureyes Foundation Ltd	Operational support for IT system.	4,000	Anonymous	CAY
	Freedom Philosophy Society Inc.	Support to produce a video promoting philosophy courses in prisons.	2,000	Margaret Neave	COM
G	Garden to Table Trust	Salary support for local coordinator role.	2,000	Nikau Youth	CAY
			1,000	Margaret Neave	
	Get Involved Charitable Trust	Support to deliver te reo and tikanga Māori programmes.	5,000	Tindall	MĀO
	Ghost Diving NZ Inc.	Support to deliver ocean clean-up events.	3,000	Blake	ENV
	Ghost Diving NZ Inc.	Support to deliver ocean clean-up events.	2,000	Craigs Investment Partners Wellington	ENV
	Good Bitches Trust	Salary support for general manager role.	3,500	Margaret Neave	COM
	Good Bitches Trust	General operational support.	1,000	Nikau Community	COM
	Graeme Dingle Foundation Wellington	Support to deliver Stars and Career Navigator programme.	7,500	Nikau Porirua	CAY
	Growing Places Charitable Trust	Salary support for project coordinator role.	2,000	Pegasus	ENV
			1,500	Margaret Neave	
H	Hau Ariki Marae	COVID-19 Response Grant 2022.	1,500	Margaret Neave	COM
	Holdsworth Restoration Trust Board	Operational support for Atiwhakatu trapping project.	5,000	Evans	ENV
	Home4All	Operational support for dementia day care centre.	7,500	Kāpiti Disability Support	DSB
	House of Science Wairarapa Charitable Trust	Purchase of items for primary school science kits.	1,000	Elma Coxon	EDU
			2,000	HP & MC Scott	
	House of Science Wellington Charitable Trust	Operational support for science education programme.	1,750	Bice Tennyson	EDU
			3,500	Nikau Porirua	
	HUHA Helping You Help Animals Trust Consolidated	Purchase of equipment for desexing surgery.	3,830	Willows	ANM
	Hutt City Budget and Advocacy Service Trust Board Inc.	Operational support for budget service promotion.	2,000	Jocelyn Vogel	COM
	Hutt Valley Emergency Kai Collective	COVID-19 Response Grant 2022.	5,000	Jocelyn Vogel	FAM
I	Incredible Families Charitable Trust	Support to deliver Incredible Years programme.	3,000	Tindall	FAM
			2,000	Nikau Youth	

	InsideOUT Kōaro	Operational support for office rental costs.	5,000	Blake	RAI
			5,000	Tindall	
K	Kalameli Brown	Scholarship to support youth leadership and education.	3,000	Win Hastings	EDU
	Kāpiti Community Foodbank Inc.	Purchase of materials to refurbish new premises.	10,000	Kāpiti Disability Support	FAM
			3,000	Evans	
	Kāpiti Impact Trust	Support to deliver Bigger Picture Parenting programme.	7,500	Tindall	FAM
	Kāpiti Youth Support	Support to deliver KYS Youth Rep programme.	4,000	Anonymous	CAY
	Karori Playcentre	Salary support for first aid training facilitator role.	1,000	Zac Pearson	CAY
	Karori Sanctuary Trust	Support to deliver Rāngai Rangatahi/Youth Collective programme.	5,000	Kevin and Julia O'Connor	ENV
	Karori West Scout Group	Operational support for scout group.	5,695	Zac Pearson	CAY
	Kenakena School	Support to deliver structured literacy programme.	3,500	Kāpiti Disability Support	EDU
			2,000	HP & MC Scott	
	Kiwi Community Assistance Charitable Trust	Salary support for warehouse role.	5,000	Nikau Porirua	COM
	KiwiClass Multicultural Support Services He Amo Taunaki Inc.	Support to deliver Project Reach programme.	7,303	Tindall	RMI
	Kura Kai	Operational support for school meal programme.	10,000	Nikau Porirua	FAM
L	Leukaemia & Blood Cancer NZ	Salary support for support services coordinator role.	8,395	Freeman	HEA
	Loughlan Prior	Scholarship to support transition from dance to dance administration.	3,500	Warren Douglas	ART
	Louise Perkins Foundation (t/a Sweet Louise)	Support to deliver breast cancer support programme.	7,500	Evans	HEA
M	Makara Peak Mountain Bike Park Supporters Inc.	Operational support for Zac's Track maintenance.	1,1391	Zac Pearson	SPO
	Mary Potter Hospice	Support to deliver children's grief programme.	7,671	Lyon	FAM
	Mary Potter Hospice	Salary support for social worker role.	5,000	Nikau Porirua	HEA
			5,000	Evans	
	Masterton Foodbank Inc.	COVID-19 Response Grant 2022.	1,300	Margaret Neave	COM
	Mothers Helpers	Salary support for social worker role.	1,250	Robson	WOM
	Mountains to Sea Wellington Trust	Salary support for Love Rimurimu – Seaweed Forest Regeneration project team roles.	1,600	Bice Tennyson	ENV
			2,500	Blake	
N	Naenae College	Salary support for social worker role.	2,100	Jocelyn Vogel	COM
			2,900	HP & MC Scott	
	Naenae Youth Charitable Trust	Salary support for finance manager and administration assistant roles.	3,500	Jocelyn Vogel	CAY
	Ngā Manu Trust	Operational support for office expenses.	2,000	Milne	ENV
	Ngā Manu Trust	Operational support for Ngā Manu Reserve.	1,500	Anonymous	ENV
	Ngā Tāngata Microfinance	Support to deliver Shifting the Dial programme.	3,000	Tindall	COM
	Ngā Uri o Whiti Te Rā Mai Le Moana Trust	Operational support for Le Malaga o Moanaroa youth hub.	7,000	Tindall	RAI
	Ngāti Toa Māori Women's Welfare League	Support to produce branch history book.	3,000	Nikau Porirua	MĀO

“Nikau Foundation’s generous support has been a huge help for our services, and it has been great to know Nikau are behind us as we serve seniors across our region.”

Stephen Opie, Age Concern Wellington

Nourish Trust	Support to deliver Christmas hampers programme.	2,000	Jocelyn Vogel	FAM
NZ Opera Ltd	Support to deliver production of Verdi’s <i>Macbeth</i> .	2,800	Milne	ART
NZ School of Dance	Support to deliver core dance programmes.	4,302	Willscott	ART
NZ School of Dance	Support to stage 2022 graduation season production.	4,000	Willscott	ART
NZ Speech Board	Scholarship for speech diploma examinations.	1,000	Laurie Bushell	EDU
NZ Vice-Chancellors’ Committee	Operational support to cover grant administration costs.	1,500	Judith Clark	ART
NZ Vice-Chancellors’ Committee	Operational support to cover grant administration costs.	1,500	Judith Clark	ART
NZ Vice-Chancellors’ Committee	2022 Fellowship awards.	20,685	Judith Clark	ART
NZ Vice-Chancellors’ Committee	2022 Fellowship awards.	11,000	Judith Clark	ART
NZ Vice-Chancellors’ Committee	2022 Fellowship awards.	11,000	Judith Clark	ART
O Orange Sky NZ	Operational support for mobile laundry and shower service.	2,500	Margaret Neave	HOM
		5,000	Tindall	
Orange Sky NZ	Operational support for mobile laundry and shower service.	2,000	Craigs Investment Partners Wellington	HOM
Ōtaki College	Salary support for garden project manager role.	2,500	Margaret Neave	COM
		5,000	Kāpiti Community Enterprises	
Ōtaki Rotary	Support to deliver Books for Children programme.	1,000	Rotary Club of Ōtaki	CAY
		2,000	HP & MC Scott	
Ōtaki Sports Club Inc.	Purchase of sports club floodlighting.	3,000	Rotary Club of Ōtaki	COM
P Pae tū Mōkai o Taurira	Purchase of items for plant and tree nursery in Featherston.	3,000	Margaret Neave	ENV
Paekākāriki School	Salary support for teacher aide role.	300	Caroline Boyd	CAY
Parent To Parent NZ Inc.	Support to deliver disability outreach programme.	4,000	Anonymous	FAM
Partners Porirua Trust	Support to deliver Drive4Life programme.	7,000	Tindall	CAY
		3,000	Nikau Porirua	
Paul Tanigaito	Scholarship to support transition from dance to dance administration.	2,000	Warren Douglas	ART
People First NZ Inc.	Support to deliver Speaking Up courses.	4,000	Margaret Neave	DSB
Pinikilicious	Event support for Pinikilicious day.	10,000	Nikau Porirua	HEA
Porirua Cook Island Assn Inc.	Operational support for community hall maintenance.	7,500	Tindall	COM
Porirua Living Without Violence Te Noho Riri Kore Inc.	Support to deliver children’s safety programmes.	2,120	Francis and Dianne Small	CAY
		2,880	Tindall	
Porirua Menzshed Inc.	Purchase of 20ft container for additional storage.	5,000	Nikau Porirua	COM

	Project Jonah NZ Inc.	Support to deliver Marine Mammal Medic training for Ngāti Toa.	5,500	Nikau Porirua	MĀO
R	Raumati South School	Support to deliver William Pike Challenge.	9,000	Mike and Margaret Olsen	CAY
	Renew Communities Trust	Salary support for community worker roles.	5,000	Margaret Neave	COM
	Rotary Club of Kāpiti	Operational support for Rotary Youth Leadership Awards.	2,500	Margaret Neave	CAY
	Royal NZ Plunket Trust	Support to deliver Improve for Change programme.	3,500	Evans	MĀO
			2,200	Jessie, Elma and Adam Coxon	
	Ruamahanga Restoration Trust	Support to deliver Schools Behind Our River awards.	3,500	Evans	ENV
S	Samaritans of Wellington Inc.	Salary support for fundraising marketing officer role.	2,500	Willscott	MHE
			2,500	Willows	
	Save the Children NZ	Support to deliver Fiji agriculture and food security programme.	7,000	Margaret Neave	COM
	Seasons For Growth Wairarapa	Operational support for grief and loss support programme.	3,000	Carterton District	FAM
	Silver Noodle Soup Film & Theatre Company Charitable Trust	Salary support for artistic director role.	2,250	Kris Fielding – We Can!	DSB
			500	Wise	
	Society of St Vincent de Paul Kapi Mana Area Council	Operational support for foodbank.	7,500	Margaret Neave	FAM
	Special Olympics Kāpiti	Support for Kāpiti athletes to attend National Summer Games.	1,500	Kāpiti Community Enterprises	DSB
	Special Olympics Mana	Operational support for equipment storage.	1,800	Kāpiti Disability Support	DSB
	Student Volunteer Army Foundation	COVID-19 Response Grant 2022.	2,500	Margaret Neave	COM
	Sustainability Trust	Purchase of sewing machines and electronic repair tool kits.	4,000	Jessie, Elma and Adam Coxon	COM
	Sustainability Trust	Operational support to establish community space in Newtown.	5,000	Margaret Neave	COM
T	Taeomanino Trust	COVID-19 Response Grant 2022.	2,500	Nikau Porirua	COM
	Taiohi Morehu	Salary support for LGBTQ+ coordinator role.	5,000	Tindall	RAI
	Tapu-te-Ranga Trust	Salary support for trust administrator and fundraising coordinator roles.	5,000	Blake	MĀO
	Te Ara Moana Trust	Purchase of replacement storage shed.	10,000	Nikau Porirua	CAY
	Te Korowai Manaaki Charitable Trust	Operational support for 2022 Whakaaro Whakairo Sculptural Symposium.	1,000	Laurie Bushell	ART
	Te Kura o Papatūānuku Wairarapa Earth School	Operational support for Healthy Kai in Schools programme.	3,000	Carterton District	COM
	Te Puna Oranga o Ōtaki	COVID-19 Response Grant 2022.	2,000	Margaret Neave	COM
	Te Rito o Te Kura Charitable Trust	Support to create school Ngāhere Kai (Food Forest).	3,600	Margaret Neave	MĀO
	Te Rūnanga o Toa Rangatira	Salary support for education and employment coordinator role.	7,500	Nikau Porirua	EDU
			7,500	Tindall	
	Te Rūnanga o Toa Rangatira	Support to create community garden project.	3,000	Nikau Porirua	COM
	Te Rūnanganui o Te Ātiawa	Operational support for breastfeeding initiative.	3,000	Margaret Neave	MĀO
	The CanInspire Charitable Trust	Operational support for CanBead workshops.	3,000	Wise	HEA

“Nikau Foundation’s support has given the company confidence to produce large-scale productions such as *Macbeth* following COVID-19 disruptions over the last few years.”

Rosalind Hemmings, New Zealand Opera

	The Cannons Creek Youth Charitable Trust	Salary support for boxing academy coach and manager roles.	7,500	Nikau Porirua	CAY
	The Cats Protection League Wellington Inc.	Operational support for senior cat fostering programme.	4,844	Eileen Ryan	ANM
	The Common Unity Project	Salary support for SewGood coordinator role.	4,000	Jocelyn Vogel	COM
	The Conch Charitable Trust	Operational support for <i>A Boy Called Piano</i> production.	2,500	Elma Coxon	PCA
	The House of Grace Trust Inc.	Purchase of materials and labour for houseparent bathroom renovation.	5,000	Blake	CAY
	The Life Flight Trust	Purchase of Westpac Rescue Helicopter trailer.	3,700	Zac Pearson	HEA
	The Malaghan Institute of Medical Research	Salary support for translational immunology researcher roles.	5,000	Wise	HEA
			5,000	Margaret Neave	
	The Mirek Smíšek Arts Trust	Support to deliver The Kilns at Te Horo project.	1,000	Laurie Bushell	ART
			2,750	Nikau Kāpiti	
	The Neonatal Trust	Support to deliver volunteer engagement programme.	4,000	Anonymous	CAY
	The Roman Catholic Archdiocese of Wellington	Support to deliver the deaf community benefit advocacy programme.	4,000	Kevin and Julia O'Connor	OGE
	The Royal Numismatic Society of New Zealand	Operational support for numismatic research and development costs.	14,000	Alistair Robb	EDU
	The Royal New Zealand Society for the Prevention of Cruelty to Animals Inc.	Salary support for volunteer management roles.	3,000	Evans	ANM
	The Shift Foundation	Salary support for Porirua youth worker role.	10,000	Nikau Porirua	WOM
	The Wellington City Mission	COVID-19 Response Grant 2022.	2,000	Margaret Neave	COM
	The Wellington City Mission	Salary support for Social Supermarket team roles.	3,500	Francis and Dianne Small	COM
			10,000	Jessie, Elma and Adam Coxon	
	The Wellington City Mission	Support to deliver community support programmes.	1,000	Margaret Neave	COM
	The Whitireia Foundation	2022 Whitireia student scholarships.	20,000	Nikau Porirua	EDU
	Track Zero Trust	Operational support for youth climate change engagement programme.	2,700	Elma Coxon	ENV
U	Upper Hutt Community Rescue Inc.	Purchase of ID card printer.	1,000	Zac Pearson	COM
	Upper Hutt Community Youth Trust	Support to deliver youth mentoring programme.	3,000	Tindall	CAY
	Upper Hutt Community Youth Trust	Support to deliver youth mentoring programme.	2,000	Anonymous	CAY
	Upper Hutt Women’s Centre Inc.	Operational support for counselling services.	3,500	Tindall	WOM
			1,250	Robson	
V	Vincent’s Art Workshop Inc.	Salary support for art tutor roles.	5,000	Kāpiti Disability Support	DSB

	Virtuoso Strings Charitable Trust Board	Operational support for rent.	2,000	Craigs Investment Partners Wellington	ART
	Virtuoso Strings Charitable Trust Board	Operational support for music lessons and orchestra programme.	2,000	Milne	ART
	Vulnerable Support Charitable Trust	Operational support for community garden.	2,000	Evans	COM
W	WELLfed NZ Trust	Operational support for service delivery.	1,000	Nikau Community	COM
	WELLfed NZ Trust	Support to deliver Porirua fruit and veggie bag programme.	2,000	Craigs Investment Partners Wellington	COM
	WELLfed NZ Trust	Salary support for the WELLfed Leadership Programme.	6,000	Tindall	COM
			4,000	Nikau Porirua	COM
	Wellington After-Care Association Inc.	Operational support for arts and crafts activity group.	955	Evans	MHE
	Wellington Early Intervention Trust	Salary support for music therapist role.	4,000	Anonymous	CAY
	Wellington Free Ambulance Service Inc.	Support to deliver GoodMeasure impact report.	4,000	Kevin and Julia O'Connor	HEA
	Wellington Homeless Women's Trust	Support to deliver WALK (wellbeing, active, love, kilometres) programme.	5,000	Margaret Neave	HOM
	Wellington Hospitals Foundation	Support to refurbish Wellington Regional Children's Hospital.	10,000	Kevin and Julia O'Connor	HEA
	Wellington Land Search and Rescue Inc.	Purchase of additional GPS tracking devices.	3,700	Zac Pearson	COM
	Wellington Riding for the Disabled Association Inc.	Operational support for lease.	7,000	Kāpiti Disability Support	DSB
	Wellington Summer Shakespeare Trust	Support to deliver Summer Shakespeare season.	1,500	Laurie Bushell	ART
	Wellington Women's Refuge	Operational support for volunteer Christmas celebration.	2,000	Craigs Investment Partners Wellington	WOM
	Wellington Youth Orchestra Inc.	Support to deliver Wellington Youth Sinfonietta season.	3,500	Savage	ART
			1,500	Pegasus	ART
	Whakarongotai Marae	COVID-19 Response Grant 2022.	2,000	Margaret Neave	MÃO
	Whanau Manaaki o Tararua Free Kindergarten Association	Operational support for volunteer army.	7,500	Nikau Porirua	COM
	Wharekaka Trust Board Inc.	Operational support for Wharekaka Rest Home and Villas.	7,459	Wharekaka	OGE
	Wharekaka Trust Board Inc.	Operational support for Wharekaka Rest Home and Villas.	40,000	Wharekaka	OGE
	Wharekaka Trust Board Inc.	Support to for Meals on Wheels programme.	5,000	Evans	OGE
	Whitford Brown Community Workshop Trust	COVID-19 Response Grant 2022.	2,500	Nikau Porirua	DSB
	Women of Worth Charitable Company Ltd.	Salary support for programme manager role.	4,000	Jocelyn Vogel	WOM
			700	Caroline Boyd	WOM
	Wood Hatton Playcentre	Salary support for session facilitator role.	2,100	Willscott	CAY
Y	Yellow Brick Road	Purchase of data/information management system.	4,000	Evans	MHE
			1,000	Nikau Wairarapa	MHE
	Youth Cultures and Community Trust	Support to deliver Rangituhi/Tītahi Bay ARO programme.	5,000	Tindall	CAY
	Youth Inspire	Salary support for relationship manager role.	2,000	Anonymous	CAY

Youth Inspire	Salary support for relationship manager role.	1,000	Jocelyn Vogel	CAY
		2,000	Tindall	
Z Zeal Education Trust	Support to deliver Kāpiti Coast youth programme.	2,400	Tindall	CAY
		1,000	Nikau Community	
Zeal Education Trust	Support to deliver Porirua youth mentorship programme.	5,500	Nikau Porirua	CAY
		2,000	Zac Pearson	
Zero Waste Ōtaki Inc.	Operational support for zero waste community space.	3,669	Evans	ENV
TOTAL		1,033,870		

Total distribution breakdown

Nikau endowment grants	785,313
Anonymous grants	57,500
Tindall Foundation grants	104,583
Perpetual Guardian grants	86,474
Net distribution	1,033,870

Image credit: Ghost Diving New Zealand.



Our supporters

We are honoured to have so many people playing a part in our story. Some choose to give to our funds as a one-off or monthly gift while others support our operational costs as part of our Nikau Club. We also receive an overwhelming amount of in-kind support, enabling us to focus our resources on growing community generosity and maximising local impact. Through this support, we can continue to deliver transformational change and increase our reach across our region. We thank the individuals and organisations listed below.

DATACOM



dundas street



**HOBSON
WEALTH**



Rieger's | print and copy

**SPY
VALLEY
WINES**

THE OFFERING
@moore wilson's

**WAKEFIELDS
LAWYERS**



MorrisonKent | Lawyers

ORANGEBOX™

Annabel McCallum

Bryan and Jan Johnson

Chris and Jan Milne

Chris and Kathryn MacKay

Craig Thompson and Gail Jansen

Frank Pearson

Dame Fran Wilde

Gary and Judy Black

Holdsworth Charitable Trust

Jamie Bull

John Illingworth

John and Jay Benton

Julia O'Connor

Kevin O'Connor

Liz Koh

Maree Fitzgerald

Margaret and Peter Shirtcliffe Foundation

Mark Dunajtschik and Dorothy Spotswood

Rachel and Chris Roberts

Richard Caughley

Warren & Anne Plimmer Foundation

Warren and Margaret Austad

In addition to this, we would like to thank the generous individuals and organisations who made an online donation to support our communities in 2022.



Image credit: Cycle Safe Porirua.

Our funds

- **Organisational Funds:** Established by organisations to maximise their fundraising efforts, safeguard their impact and achieve their growth goals.
- **Forever Funds:** Established by individuals, families and organisations to give back to the people and places they love forever.
- **Al and Alison Rowland Fund** Supporting the advancement of arts and culture.
- **Barbara Milne Fund** Continuing her legacy, Barbara's fund supports local arts, environmental and conservation causes.
- **Bertaud Gandar Fund** Established to promote educational advancement for primary, secondary and tertiary students and to support rehabilitation through education for prisoners.
- **Caroline Boyd Memorial Fund** Established in 2017 to support the advancement of youth, women and community development – areas Caroline was extremely passionate about.
- **Carterton District Fund** Supporting the community to thrive through health and wellbeing, community development and funding for where the need is greatest.
- **Chilton Old Girls' Association Fund** Supporting the development and student experience of Chilton Saint James School.
- **Chris Thomas Fund** Committed to the ecological and environmental conservation of our local region.
- **David and Anne Buckell Endowment Fund** Committed to support a range of charitable organisations with an emphasis on youth, medicine and health.
- **Eileen Ryan Cats Fund** Committed to ensure cats are cared for and nurtured.
- **Elizabeth Rose Fund** Supporting our region's arts and heritage, health and wellbeing.
- **Elma Coxon Fund** Established in 2017 to honour the rich life of Elma – supporting youth, education and the arts.
- **Eva and Johannes Schellevis Fund** Committed to support migrants and former refugees and initiatives working to alleviate poverty.
- **Experience Wellington Fund** Ensuring the future of Wellington's most iconic arts, cultural and educational sites.
- **Fagerstrom Fund** Committed to support the advancement of medical research and the region's health and wellbeing.
- **Five Ships Fund** Established to support a wide range of organisations dedicated to youth development, artistic endeavours and Christian fellowship.
- **Foureyes Fund** Aiming to identify and treat New Zealand children with eyesight problems and provide affordable eyewear.
- **Friends of the Wellington Botanic Garden Endowment Fund** Supporting the delivery of events, lectures and workshops to deepen engagement and interest in the garden.



Image credit: Renew Communities Trust.

- **Gustofson Endowment Fund**
Committed to preserve heritage buildings and significant historical artefacts and funding community facilities and scholarships for youth development.
- **HP and MC Scott Memorial Fund**
Dedicated to support children's health and welfare.
- **Kāpiti Disability Support Fund**
Delivering key support to disabled communities living in Kāpiti.
- **Kevin and Julia O'Connor Fund**
Committed to support the work of the Roman Catholic diocese and the health and wellbeing of our communities.
- **Kirk-Burnnand Family Fund**
Supporting youth to develop valuable life and leadership skills, allowing them to flourish within the community.
- **Kris Fielding – We Can! Fund**
Established to support people experiencing 'diffability' to unlock their potential through education.
- **Laurie Bushell Fund**
Established in 2007 to honour the life of Laurie – cultivating our creative capital with a particular focus on supporting music and fine arts.
- **Leslie Austin Fund**
Committed to enhance the performing arts across our region.
- **Lilburn Residence Support Fund**
Supporting the maintenance of the Lilburn Residence and the next generation of New Zealand composers.
- **Main Dickinson-Smith Family Fund**
Established to support a range of environmental, medical, recreational and educational causes for a thriving Wellington.
- **Margaret Neave Endowment Fund**
Dedicated to poverty relief, the advancement of education or pressing community needs.
- **Mike and Margaret Olsen Fund**
Dedicated to support youth development, leadership and management skills.
- **Ngā Manu Fund**
Establishing a lasting legacy for the conservation of our native flora and fauna.
- **Pegasus Fund**
Supporting a wide range of priorities across our communities – arts and culture, environment and conservation, education, youth and animal welfare.
- **Robert and Kathleen Lyon Fund**
Dedicated to support the health and wellbeing of our communities.
- **Robson Family Fund**
Enabling our region to thrive – with a focus on supporting youth, health and wellbeing, medical research and the arts.
- **Rosemary Gray Fund**
Established to respond to where the greatest needs lie in the Wellington community, with a focus on the environment, children and medical research.
- **Rotary Club of Ōtaki Fund**
Established to create a lasting legacy for the people and places of Ōtaki.
- **Still Here Fund**
Dedicated to support environmental causes and Buddhist meditation practice.
- **The Alistair Robb Numismatics Fund**
Nurturing ongoing scholarly debate and research on coins, bank notes, medals and tokens.
- **The Bice Tennyson Fund**
Supporting young children facing hardship and disadvantage and the protection of our natural habitat.

- **The Blake Fund**
Providing support for our young people – with a focus on women, Māori, Pacifica, migrants and rainbow communities.
- **The Francis and Dianne Small Fund**
Committed to the social wellbeing of Wellington – supporting health, education and those facing financial hardship.
- **The Friends of Old St Paul’s Fund**
Supporting this historic Wellington landmark – now and into the future.
- **The James C Draper Fund**
Supporting organisations driving medical research, social services and animal welfare.
- **The Jenny and Ross Hanna Fund**
Established to enable our region to flourish – supporting the advancement of health and the arts.
- **The Jessie, Elma and Adam Coxon Fund**
Aiming to address the most pressing issues facing our community with a focus on education, religion and health and supporting those facing financial hardship.
- **The Jocelyn Vogel Fund**
Dedicated to causes helping the Hutt community to thrive.
- **The Judith Clark Memorial Fund**
In honour of a much-loved teacher whose influence continues to reach generations of New Zealand pianists – funds support the education of young musicians and music teachers.
- **The Kāpiti Community Enterprises Fund**
Supporting those living with an intellectual disability or struggling with mental health issues to find meaningful employment or engage in further education so they can contribute to their community.
- **The Leseberg Fund**
Committed to support environmental sustainability, funding causes dedicated to conservation of our region’s natural environment.
- **The Max Koh Fund for Meow Meows**
Established as a bequest to support areas that Max is most passionate about – animal and women’s welfare.
- **The National Collective of Independent Women’s Refuges Fund**
Ensuring critical support services, programmes and refuges for women and children experiencing family violence.
- **The Savage Fund**
Nurturing the next generation of classical musicians in Wellington city – focus on training and providing access to perform publicly as part of an orchestra.
- **The Teresa Freeman Fund**
Established to provide funding support for health-focused organisations throughout the Wellington region.
- **The Wharekaka Fund**
Supporting the development of Wairarapa’s Wharekaka Rest Home, which provides nurturing care and promotes independent living for the older generations.
- **The Willows Fund**
Supporting initiatives for children living with Crohn’s disease and/or colitis, animal welfare and the environment.
- **The Zac Pearson Fund**
Established in 2015, Zac wished to support the people and places he cared about most – funding youth initiatives, health and wellbeing, Makara Peak and social services.
- **Tomiki Fund**
Supporting the martial art of Aikido, with a focus on those practising Shodokan or Tomiki, and providing funding to secure the future of our region’s dojos.
- **Wairarapa Nurses and Midwives Educational Fund**
Providing scholarships for the development of professionals located in the Wairarapa region.
- **Warren Douglas Scholarship Fund**
Supporting the training of those wishing to transition from performer to arts management.
- **Wellington Youth Cricket Development Fund**
Committed to supporting young people to realise their potential in cricket across the Wellington region.
- **Willscott Fund**
Managed by Nikau since 2008, grants from this fund support early childhood education, social services and the arts.



Nikau works with many donors who wish to remain anonymous. We wish to acknowledge their generosity and commitment to a thriving region. Thank you.



Image credit: Orange Sky.

Our grant-making partners

Our community connectedness and collaborative approach means organisations choose to work with us to ensure that their grant-making is strategic and delivers impact.

For many years, we have partnered with Perpetual Guardian and the Tindall Foundation, connecting them with local organisations, projects and initiatives that align with their philanthropic goals.



We are proud to be the Tindall Foundation’s regional partner, helping it to make a difference locally through effective grant-making and leveraging our community knowledge and connections.

Perpetual Guardian

We acknowledge the generosity of the following Perpetual Guardian donors.

Henderson Conservation Trust

Grace Mary Henderson was committed to ensuring that future generations could enjoy local reserves and open spaces in Wellington – supporting parks and playgrounds to be enjoyed by young and old.

Henry and Eileen Wise Medical Trust

Committed to advancing health for the benefit of our communities.

Richard and Doreen Evans Charitable Trust

Supporting our community’s greatest needs – with a focus on advancing education and religious institutions, fostering health and wellbeing and helping those in positions of financial hardship.

Tindall Foundation

Established in 1994 by Sir Stephen and Margaret Tindall, the Tindall Foundation works throughout Aotearoa New Zealand to build stronger, self-sustaining communities. The Foundation believes that all New Zealanders should have the opportunity to reach their potential and to contribute to society.

In line with Tindall’s philanthropy strategy, grants are given to effect positive change in the areas of youth, families and community and make an impact for rainbow and former refugee communities.

This year, we gave out over \$104,000 in grants on behalf of the Tindall Foundation.

Giving where your heart is

Any gift, large or small, can make a lasting difference in the areas closest to your heart. We would like to thank those who have chosen to make a gift to these funds, enabling us to make our region happier, healthier and more resilient.

- Nikau Community Fund
- Nikau Kāpiti Fund
- Nikau Porirua Fund
- Nikau Wairarapa Fund
- Nikau Wellington Fund
- Nikau Youth Fund



Image Credit: Ghost Diving New Zealand.



T 04 381 2224
info@nikaufoundation.nz

Level 5
166 Featherston Street
Wellington 6011

PO Box 24-220
Manners Street
Wellington 6142

www.nikaufoundation.nz