



Impact Report 2021

Te Pūrongo ā Tau



“Giving through a community foundation is a kaitiaki role for society – we can all play a part in being guardians for New Zealand.”

Adrian Orr, Governor of the Reserve Bank of New Zealand Te Pūtea Matua



Philanthropy highlights

251



Grants given to organisations effecting real change in our communities.



\$902,834

Granted to organisations making an impact throughout Te Upoko o te Ika a Maui the Greater Wellington region.



12



New funds established by generous individuals, families and organisations.



\$29.7m

Invested and grown to support our communities forever.



\$91,800

Granted to help youth realise their potential.



\$67,349

Granted to foster and preserve our vibrant arts scene.



\$59,700

Granted to advance education and research.



\$30,800

Granted to protect and conserve our natural flora and fauna.



\$125,325

Granted to protect the physical and mental health of our communities.



\$99,120

Granted to nurture families, children and babies.



Contents



Our mission	3
Where we work	4
From the Chair	5
From the Executive Director	6
Our funds	7
KiwiClass Multicultural Support Services: Shifting the narrative on former refugee and migrant experiences	10
Mountains to Sea Wellington: Inspiring the next generation of climate activists	11
2020/21 grants	12
Kaibosh Food Rescue: A simple, practical solution to alleviate food insecurity	22
Foureyes Foundation: Making eyecare more accessible for Kiwi kids	23
Our community – Kāpiti	24
Kāpiti Disability Support Fund: Offering sustainable support to disabled communities	25
Rotary Club of Ōtaki Fund: A valuable asset for the future of Ōtaki	26
Our community – Porirua	27
Cycle Safe Porirua: Connecting our communities through fitness and fun	28
Pinikilicious: Empowering women to take charge of their health	29
Our community – Wairarapa	30
Seasons for Growth: Delivering life-changing coaching through the seasons of grief	31
Kris Fielding – We Can! Fund: Empowering and enhancing the lives of people living with ‘diffability’	32
Laurie Bushell Fund: Everlasting support for the arts	33
Update from the Michael & Suzanne Borrin Foundation	34
How we work	35
Our team	37
The Nikau family	39
Safeguarding organisational impact	42
Community Foundations of New Zealand: Celebrating 30 years of a movement	43
Financials	44

Our mission is to build healthy, thriving and resilient communities across Te Upoko o te Ika a Maui the Greater Wellington region

Together, we are building reliable long-term funding streams to support the people and places of Wellington.

As the Wellington region's community foundation, we are committed to creating transformational change for our communities, ensuring everyone has the tools and resources they need to flourish. We have strong connections to our community and are in tune with their needs, working to ensure local generosity goes to local causes.

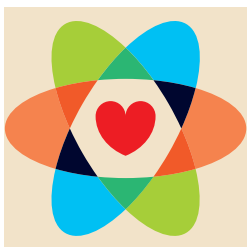
Our aim is to give every Wellingtonian the opportunity to effect positive change on their doorstep.

Our story

Inspired by the work of a worldwide network of community foundations, Nikau Foundation was established in 1991 – **the first of its kind in Aotearoa New Zealand.**

This network of community foundations now comprises 17 foundations throughout the country, each working to make a positive and lasting impact within their respective regions. Now in our 30th year, Nikau is the guardian of over \$29 million, which has been invested to support our communities forever.

Our values



Ethical

We approach every aspect of our work with transparency, fairness and integrity.



Transformative

We create meaningful change in our communities by building reliable funding streams and practising effective grant-making.



Inclusive

We value the diversity in our communities and strive to build a culture of respect and inclusion.



Flexible

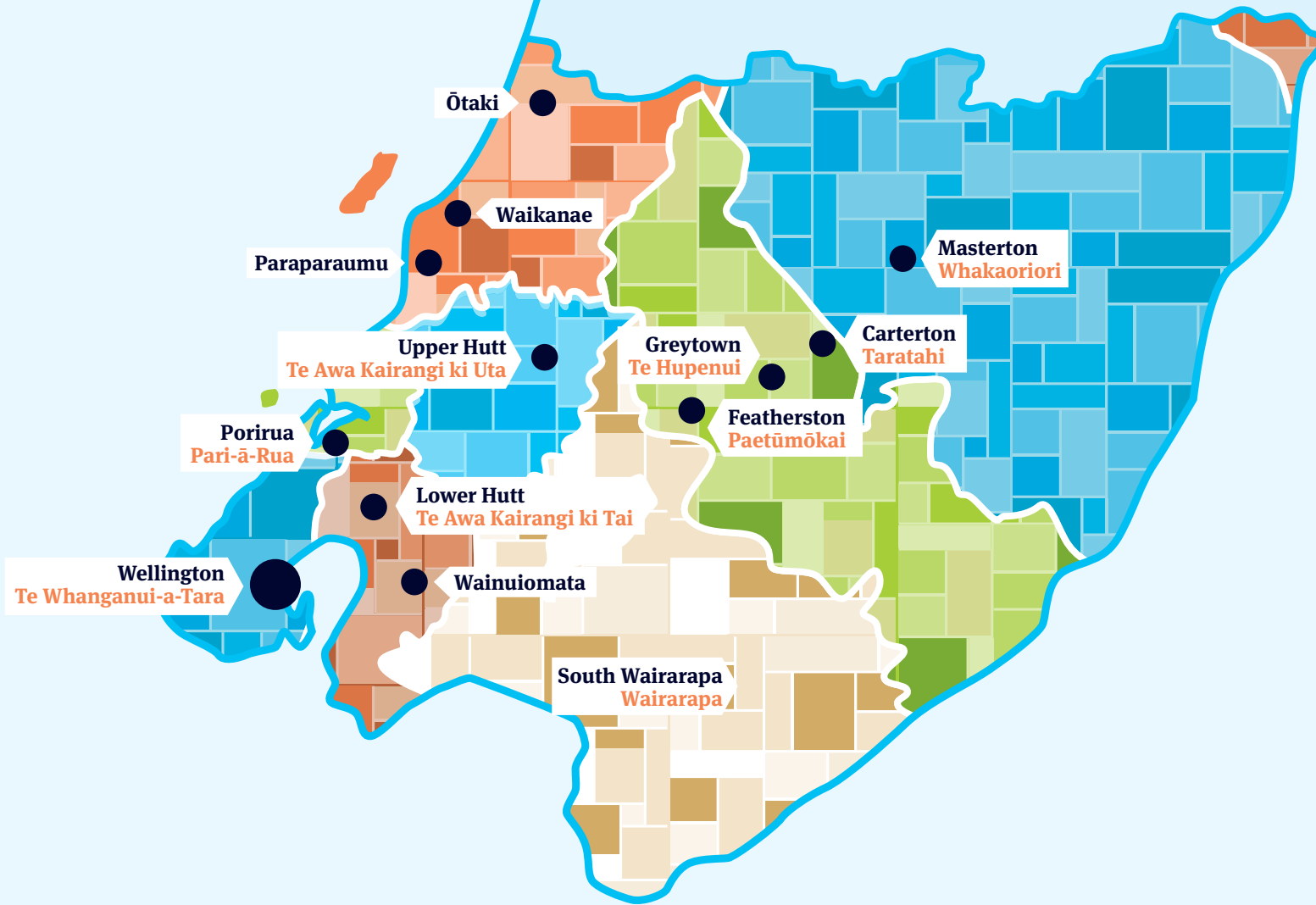
We offer a tailored approach to giving, allowing donors to give to the people and places they love. We are adaptable to the changing needs of our communities and region.



Collaborative

With deep roots in the community, we work to maximise our impact through relationships and partnerships.

Where we work



From the Chair

E aku nui, e aku rahi, tēnā koutou katoa.

It is my pleasure to bring you Nikau Foundation's 2021 Impact Report. Since stepping into the position of Chair in May, I have been delighted to see how well the management team and Board of Trustees are collaborating to work towards our vision and make a difference every day.

I would like to thank former Chair Chris Milne for his immense contributions to Nikau Foundation's growth since 2011. In particular, Chris drove many changes in process that have been significant in improving our delivery. **Thank you Chris for your commitment and time.**

We also said goodbye to valued trustees Greg Kelly, Jill Day and Robert Cross at the AGM in February. **We thank you for your time and expertise.**

COVID-19 has continued to create many challenges for our communities. It has hit the already under-resourced not-for-profit sector particularly hard and has highlighted the many issues of inequality and hardship facing our communities. To address these challenges, we were pleased to make grants of over \$900,000 to community organisations operating throughout the region. Many of them were working on the frontlines during the lockdown. I am proud of how the Nikau team persevered and continued to deliver impressive mahi during this period with the support of our Board of Trustees.

This year, we celebrated many milestones, including marking 30 years of Nikau Foundation. During this first chapter, we have made immense progress as an organisation, financially and operationally. During the year, our funds under management surpassed \$29 million. Combined with corporate trusteeships, including the Michael & Suzanne Borrin Foundation, this brings our total funds under management to \$80.9 million. This growth is testament to the strength of the community foundations model and to Nikau Foundation's stellar reputation as a strategic forward-thinking organisation.

I want to particularly acknowledge those who have helped us in making such progress. Whether you are a donor, supporter, volunteer, team member or partner organisation, you have all played a significant role in the story of Nikau Foundation to date. Many thanks to you all! I also want to acknowledge the work of our



staff, led by Alice Montague. The dedication of this small team has been exemplary during a very trying period.

For many organisations, the last two years has signalled a direction change. For us, this time has meant re-evaluating how we can best serve our communities. Our next chapter will see us adopting strategies for more-streamlined operations, effective delivery of our grant-making service and maximised impact for our communities. From 2022, Nikau Foundation will be adopting the United Nation's Sustainable Development Goals as an operational framework for our grant-making. This framework will help us to work more flexibly with heightened accountability and consideration of where the biggest opportunities for change lie. It will allow us to make a larger impact locally while aligning with a global movement.

I know that the trustees are all looking forward to a reinvigorated Nikau in 2022 – working in a new environment and, as always, committed to our kaupapa of promoting community wellbeing.

Ngā mihi

A handwritten signature in black ink, reading 'Fran Wilde'. The signature is fluid and cursive, written in a professional style.

Dame Fran Wilde
Chair

From the Executive Director

Tēnā koutou katoa.

As the first community foundation in New Zealand, we are proud to have seeded a national movement. What started as a series of gifts from a handful of generous donors has grown to a pool of over \$200 million managed by 17 community foundations nationally, with Nikau managing over \$29 million. This is the power of the model.

Since 1991, we have funded hundreds of community organisations doing great mahi for our region. For many, like Kaibosh Food Rescue, this funding has been pivotal for its growth. For others, this funding has been the difference between operating from a kitchen table and securing premises or having the tools and resources to reach more people in need. **Thank you to our donors who have helped us to make this impact.**

Sadly, throughout 2021, the pandemic continued to impact our daily lives. Our team responded quickly when we faced another snap lockdown in August. During this period, we were pleased to offer extra support to community organisations working on the frontline – Whare Manaaki Porirua Women’s Refuge, Hutt Valley Emergency Kai Collective, WELLfed and St Anne’s Pantry.

This year, we were pleased to partner with a number of respected organisations, including the Rotary Club of Ōtaki and Foureyes Foundation, to bolster their growth and safeguard their impact. Similarly, more generous individuals have chosen to establish a fund in honour of the people and places they love. This is a testament to Wellingtonians and the community-minded spirit that makes our region special.

Thank you.

We were delighted to welcome Dame Fran Wilde to the position of Chair in May and have been thrilled to observe the impact she has brought to Nikau to date. I would like to personally thank former Chair Chris Milne for his guidance, expertise and skills.

Today, Wellington faces different environmental, social and economic challenges than 30 years ago.



These shifts will continue to create new issues for our communities to address and will put a strain on our resources as a region. It is a comfort knowing that, whatever challenges are thrown our way, Nikau Foundation is here to support our communities forever.

Ngā mihi

A handwritten signature in black ink that reads "A. Montague". The signature is fluid and cursive, with a long horizontal stroke at the end.

Alice Montague
Executive Director



New Zealand Opera Ltd. Image credit: David Rowland.

Making a difference, wherever your heart is

Whether you are passionate about helping youth fulfil their potential, ensuring that our natural flora and fauna is preserved for generations to come or fostering Wellington's flourishing arts scene, Nikau Foundation allows you to create transformational change for the people and places you love.

There is no 'one size fits all' when it comes to giving through Nikau Foundation. While some choose to establish an individual fund based on their interests, others choose to give as a family or leave a gift in their will. However you wish to give, we're here to help you make your vision for a thriving Wellington region come alive.

New funds

We sincerely thank all the generous individuals and families who have chosen to partner with Nikau Foundation in 2021.

David and Anne Buckell Endowment Fund

Committed to support a range of charitable organisations with an emphasis on youth, medicine and health.

Eileen Ryan Cats Fund

Committed to ensure cats are cared for and nurtured.

Eva and Johannes Schellevis Fund

Committed to support migrants and former refugees and initiatives working to alleviate poverty.

HP and MC Scott Memorial Fund

Dedicated to support children's health and welfare.

Kris Fielding – We Can! Fund

Established to support people experiencing 'diffability' to unlock their potential through education.

Robert and Kathleen Lyon Fund

Dedicated to support the health and wellbeing of our communities.

We also welcomed two anonymous funds in the financial year.

Existing funds

Al and Alison Rowland Fund

Supporting the advancement of arts and culture.

Barbara Milne Fund

Continuing her legacy, Barbara's fund supports local arts, environmental and conservation causes.

Bertaud Gandar Fund

Established to promote educational advancement for primary, secondary and tertiary students and to support rehabilitation through education for prisoners.

Caroline Boyd Memorial Fund

Established in 2017 to support the advancement of youth, women and community development – areas Caroline was extremely passionate about.

Carterton District Fund

Supporting the community to thrive through health and wellbeing, community development and funding for where the need is greatest.

Chris Thomas Fund

Committed to the ecological and environmental conservation of our local region.

Elizabeth Rose Fund

Supporting our region's arts and heritage, health and wellbeing.

Elma Coxon Fund

Established in 2017 to honour the rich life of Elma – supporting youth, education and the arts.

Fagerstrom Fund

Committed to support the advancement of medical research and the region's health and wellbeing.

Five Ships Fund

Established to support a wide range of organisations dedicated to youth development, artistic endeavours and Christian fellowship.

Gustofson Endowment Fund

Committed to preserve heritage buildings and significant historical artefacts and funding community facilities and scholarships for youth development.

Kevin and Julia O'Connor Fund

Committed to support the work of the Roman Catholic diocese and the health and wellbeing of our communities.

Kirk-Burnnand Family Fund

Supporting youth to develop valuable life and leadership skills, allowing them to flourish within the community.

Laurie Bushell Fund

Established in 2007 to honour the life of Laurie – cultivating our creative capital with a particular focus on supporting music and fine arts.

Leslie Austin Fund

Committed to enhance the performing arts across our region.

Main Dickinson-Smith Family Fund

Established to support a range of environmental, medical, recreational and educational causes for a thriving Wellington.

Margaret Neave Endowment Fund

Dedicated to support charities providing vital medical care to children both locally and overseas.

Mike and Margaret Olsen Fund

Dedicated to support youth development, leadership and management skills.

O'Dea Illingworth Fund

Committed to prevent climate change through research.

Pegasus Fund

Supporting a wide range of priorities across our communities – arts and culture, environment and conservation, education, youth and animal welfare.

Robson Family Fund

Enabling our region to thrive – with a focus on supporting youth, health and wellbeing, medical research and the arts.

Rosemary Gray Fund

Established to respond to where the greatest needs lie in the Wellington community, with a focus on the environment, children and medical research.

The Alistair Robb Numismatics Fund

Nurturing ongoing scholarly debate and research on coins, bank notes, medals and tokens.

The Bice Tennyson Fund

Supporting young children facing hardship and disadvantage, and the protection of our natural habitat.

The Blake Fund

Providing support for our young people – with a focus on women, Māori, Pasifika, migrants and rainbow communities.

66 endowment funds committed to effecting transformational change for our communities.

The Francis and Dianne Small Fund

Committed to the social wellbeing of Wellington – supporting health, education, and those facing financial hardship.

The Freeman Fund

Established to provide funding support for health-focused organisations throughout the Wellington region.

The James C Draper Fund

Supporting organisations driving medical research, social services and animal welfare.

The Jenny and Ross Hanna Fund

Established to enable our region to flourish – supporting the advancement of health and the arts.

The Jessie, Elma and Adam Coxon Fund

Aiming to address the most pressing issues facing our community with a focus on education, religion and health, and supporting those facing financial hardship.

The Jocelyn Vogel Fund

Dedicated to causes helping the Hutt community to thrive.

The Judith Clark Memorial Fund

In honour of a much-loved teacher whose influence continues to reach generations of New Zealand pianists – funds support the education of young musicians and music teachers.

The Kāpiti Community Enterprises Fund

Supporting those living with an intellectual disability or struggling with mental health issues to find meaningful employment or engage in further education so they can contribute to their community.

The Leseberg Fund

Committed to support environmental sustainability, funding causes dedicated to conservation of our region's natural environment.

The Max Koh Fund for Meow Meows

Established as a bequest to support areas that Max is most passionate about – animal and women's welfare.

The Savage Fund

Nurturing the next generation of classical musicians in Wellington city – focus on training and providing access to perform publicly as part of an orchestra.

The Willows Fund

Supporting initiatives for children living with Crohn's disease and/or colitis, animal welfare and the environment.

The Zac Pearson Fund

Established in 2015, Zac wished to support the people and places he cared about most – funding youth initiatives, health and wellbeing, Makara Peak and social services.

Tomiki Fund

Supporting the martial art of Aikido, with a focus on those practising Shodokan or Tomiki, and providing funding to secure the future of our region's dojos.

Warren Douglas Scholarship Fund

Supporting the training of those wishing to transition from performer to arts management.

Willscott Fund

Managed by Nikau since 2008, grants from this fund support early childhood education, social services and the arts.

Perpetual Guardian funds

Our community connectedness and collaborative approach means that many organisations choose to partner with us to ensure that their grant-making is strategic and delivers impact. For many years, we have partnered with Perpetual Guardian and acknowledge the generosity of the following donors.

Henderson Conservation Trust

Grace Mary Henderson was committed to ensuring that future generations could enjoy local reserves and open spaces in Wellington – securing parks and playgrounds to be enjoyed by young and old.

Henry and Eileen Wise Medical Trust

Committed to advance health for the benefit of our communities.

Richard and Doreen Evans Charitable Trust

Supporting our community's greatest needs – with a focus on advancing education and religious institutions, fostering health and wellbeing and helping those in positions of financial hardship.

There are many generous donors and families who choose to remain anonymous. We would like to thank and acknowledge this generosity and kindness.

Any gift, large or small, can make a lasting difference. By giving through Nikau Foundation, you can support the people and places you love the most. We would like to thank those who have chosen to make a gift to these funds, enabling us to respond where the needs are the greatest.

Animal Welfare

Arts, Culture and Heritage

Children and Families

Disability

Education

Elderly

Environment and Conservation

Health and Medical Research

Housing and Homelessness

Mental Health

Nikau Community Fund

Nikau Kāpiti Fund

Nikau Porirua Fund

Nikau Wairarapa Fund

Sport and Recreation

Technology and Innovation

“To those who want to make a difference but aren't sure where to donate, Nikau Foundation can help you to direct your gifts to community organisations doing clever work in your areas of interest.”

Barbara Blake, Nikau Foundation Fund Donor

A young person is shown from the chest up, holding a camera with a teal lens cap and a slice of pizza. They are looking through the camera's viewfinder. The background is blurred, suggesting an indoor setting with warm lighting.

Shifting the narrative on former refugee and migrant experiences

“The role a KiwiClass educator plays is so much more than just teaching English language. They are trusted mentors and confidants for our students,” says Elizabeth Young, KiwiClass Multicultural Support Services Chief Executive.

“They help at every touchpoint of a former refugee or migrant’s settlement journey in New Zealand – from helping to navigate the New Zealand transport system to accessing key services.”

Building key skills

Established in 1995, KiwiClass empowers former refugees and migrants to reach their goals while developing their English language skills.

“Our integrative approach means that our programmes have both tangible and intangible outcomes for students. While a tangible outcome would be securing employment or improving key English literacy skills, we also aim to build confidence and to galvanise our students’ sense of cultural identity as they navigate their settlement journey,” says Elizabeth.

Reframing refugee and migrant experiences

The brainchild of KiwiClass Board Member and former refugee Afnan Al-Rubayee, KiwiClass initiative Storytelling through Photography offered the opportunity for young people to channel their creativity, learn valuable technical photography skills and bring their stories alive while shifting the narrative on former refugee and migrant experiences.

“More often than not, former refugees and migrants are denied the opportunity to tell their own stories. As a result, the narrative is skewed and is typically presented with an underpinning ‘victim’ focus. This project empowered students to tell their own unique stories with the hope that their work reframes this narrative on a wider scale,” says Afnan.

Crucial funding

Nikau Foundation gave KiwiClass \$5,000 from the Tindall Foundation to deliver the Storytelling through Photography programme. “This funding was crucial to ensure the project went ahead and this amazing experience could be delivered to our students,” says Elizabeth.

The students’ finished works were shown at an exhibition taking place in conjunction with Wellington’s World Refugee Day Festival in June 2021.



\$36,000 given to support former refugee and migrant communities.



Inspiring the next generation of climate activists

Encouraging kaitiakitanga roles for our youth

In response to global environmental threats, education organisation Mountains to Sea Wellington (MTSW) is taking things local to address human impacts on oceans and waterways. “Our primary goal is to foster kaitiakitanga (guardianship) of the rivers, harbours and coastlines,” says Co-Director Sarah Kachwalla. “We want all of our students to feel empowered to make an impact on their doorstep.”

Established in 2008, MTSW now delivers four programmes annually, all designed to inspire a greater appreciation of nature and a keener understanding of key conservation issues – Experiencing Marine Reserves, Whitebait Connection, Healthy Harbours and Love Rimurimu. These programmes are immersive in nature and include classroom education, field trips and volunteer-guided snorkelling. “Our students’ favourite part is putting on their snorkels,” says Sarah. “We have to remind them to silently swim rather than excitedly squeal!”

Creative conservation solutions

Throughout all programmes, students are encouraged to observe the differences between conserved and threatened marine and freshwater environments. At the end of each term, they are challenged to come up with an action plan to combat human impacts. “The ideas children come up with are super creative,” explains Sarah, “from launching stream cleanups and restoration planting initiatives to painting a mural to bring awareness to pollution in our waterways. It’s inspiring to see how enthusiastic they are!”

Funding for expansion

With the demand for environmental education at an all-time high, MTSW sought funding to deliver the Whitebait Connection programme to schools with fewer resources. “For us, it is really important that we remain as accessible as possible, which is why this funding is so crucial,” says Sarah. “Every child should be given the opportunity to connect with nature and to effect positive change for our environment.”

Nikau Foundation gave \$2,000 from the Richard and Doreen Evans Charitable Trust to support programme delivery to three schools, 109 students and 11 adults in Porirua.



\$30,800 given to protect and conserve our environment.



Image Credit: Everybody Eats.

All grants

ANM = Animals **ART** = Arts and culture **CAB** = Children and babies **COM** = Community **DSB** = Disability
EDU = Education and research **ENV** = Environment and conservation **FAM** = Families **HEA** = Health **HER** = Heritage
OGE = Older generations **RAI** = Rainbow **RMI** = Former refugees and migrants **WOM** = Women **YOU** = Youth

Organisation name	Grant description	Amount	Fund (\$)	Category
A Agape Budgeting Service Ltd	Operational support to deliver budgeting education services.	3,000	Tindall	COM
Agape International Ministries Inc. Trust	Operational support to deliver fono fale programme.	5,000	Nikau Porirua	FAM
Ahu Charitable Trust ki Pukerua Bay	Operational support to deliver programme of local events and workshops.	2,000	Nikau Porirua	COM
Alzheimers Wairarapa Inc.	Salary support for community nurse role.	1,500	Mace	HEA
Aphasia New Zealand Charitable Trust	Operational support to deliver community aphasia advisors' service.	2,500	Margaret Neave	HEA
Aro Valley Community Council Inc.	Salary support for contractors delivering community classes.	500	Evans	COM
Asert-Tatou Development Trust	Operational support to maintain Te Rito gardens.	6,000	Nikau Porirua	DSB
Asthma New Zealand Inc.	Salary support for mobile asthma nurse educator roles.	1,461	Wise	HEA
Asthma New Zealand Inc.	Salary support for mobile asthma nurse educator roles.	1,500	Mace	HEA
Atafu Tokelau Community Group Inc.	Operational support to assist with community facility utilities.	8,000	Nikau Porirua	COM
Autism Wairarapa Charitable Trust	Salary support for support coordinator roles.	2,000	Wise	DSB
B Babystart Charitable Trust	Purchase of baby box items.	1,800	Anonymous	CAB
Barnardos Early Learning Centre, Eastbourne	Assistance to resurface playground.	1,500	Mace	CAB
Barnardos New Zealand Inc.	Operational support to deliver family violence safety programmes.	2,250	Elma Coxon	FAM

Bellyful New Zealand Trust	Operational support to assist five Wellington branches.	2,000	Evans	FAM
Big Brothers Big Sisters	Operational support to deliver youth mentoring programme.	5,000	Anonymous	YOU
Big Buddy Mentoring Trust	Purchase of laptops.	2,000	Evans	YOU
Billy Graham Youth Foundation	Operational support to deliver youth programme.	1,800	Anonymous	YOU
Billy Graham Youth Foundation	Salary support for CEO role.	2,500	Jocelyn Vogel	YOU
Birthright Hutt Valley Trust	Salary support for social worker role.	3,500	Jocelyn Vogel	FAM
Birthright Hutt Valley Trust	Operational support to offer a volunteer koha.	5,000	Anonymous	FAM
Birthright Wellington Inc.	Operational support to assist with office rental costs.	3,000	Jessie, Elma and Adam Coxon	FAM
Blind Low Vision New Zealand	Purchase of recreational reading books.	2,000	Mace	DSB
Blind Low Vision New Zealand	Support to deliver free counselling.	4,000	Wise and Evans	DSB
Blind Low Vision New Zealand	Operational support for Wellington service centre.	7,626	Freeman	DSB
Blueprint Community Trust	Salary support for community worker role.	2,000	Tindall	COM
Brain Injury Association Wellington	Operational support to deliver traumatic brain injury support groups.	2,000	Mace	HEA
C Cancer Society of New Zealand Wellington Division Inc.	Purchase of overlockers for creative volunteers.	1,000	Wise	HEA
Cancer Society of New Zealand Wellington Division Inc.	Purchase of wheelchairs and shower stools.	1,385	Mace	HEA
Cancer Society of New Zealand Wellington Division Inc.	Purchase of beds for Margaret Stewart House.	3,000	Wise	HEA
Cancer Society of New Zealand Wellington Division Inc.	Purchase of cantilever umbrellas.	3,558	Wise	HEA
Cannons Creek Youth Charitable Trust	Purchase of Cannons Creek Boxing Academy van.	5,000	Nikau Porirua	YOU
Carter Society Inc.	Purchase of hospital-level beds.	3,054	Carterton	OGE
Carterton Town and Country Development Group Inc.	Purchase of books for struggling readers.	2,500	Carterton	EDU
Cathedral of The Sacred Heart Parish	Support for earthquake strengthening work.	5,000	Kevin and Julia O'Connor	HER
Challenge 2000 Trust	Operational support to deliver youth programmes.	5,000	Anonymous	YOU
Chamber Music New Zealand	Platinum award at chamber music finals.	10,000	Judith Clark	ART
Changemakers Resettlement Forum Inc.	Support for Turning the Curve driving programme.	7,500	Tindall	RMI
Chilton Old Girls' Association Inc.	Student scholarships.	3,000	Chilton Old Girls' Association	EDU
Christ Church Cottage Museum Trust	Funding to support visitor centre build.	2,500	Jessie, Elma and Adam Coxon	HER
Citizens Advice Bureau Porirua Inc.	Support for office rent costs.	8,000	Nikau Porirua	COM
Citizens Advice Bureau Wellington Inc.	Purchase of office equipment.	2,900	Anonymous	COM
Coasters Musical Theatre Inc.	Support to deliver <i>Mary Poppins</i> production.	500	Laurie Bushell	ART
Cobblestones Trust	Support to develop interpretive signs for museum.	6,800	Anonymous	HER
Cobblestones Trust	Support for Hastwell Stables renovations.	5,000	Anonymous	HER
Crisis Pregnancy Support Wairarapa Trust	Operational support for rebranding.	2,000	Evans	WOM

	Crohn's & Colitis New Zealand Charitable Trust	Support for Camp Purple Live 2021.	1,696	Willows	HEA
	Cycle Safe Porirua Trust	Purchase of e-bike.	3,500	Nikau Porirua	COM
D	Diabetes Wellington Inc.	Printing of educational material.	1,000	Jessie, Elma and Adam Coxon	HEA
	Digital Seniors	Travel costs for community manager.	2,500	Evans	OGE
E	Ekta New Zealand Inc.	Food distribution for vulnerable communities.	4,000	Nikau Porirua	COM
	English Language Partners New Zealand Trust	Operational support to run Lower Hutt centre.	5,000	Tindall	RMI
	English Language Partners New Zealand Trust	Operational support to deliver English language courses.	10,000	Tindall	RMI
	Epilepsy Association of New Zealand Inc.	Salary support for field support service staff.	1,000	Jessie, Elma and Adam Coxon	HEA
	Everybody Eats Charitable Trust	Funding to expand Wellington operations.	1,000	Jessie, Elma and Adam Coxon	COM
	Experience Wellington (Wellington Museums Trust Inc.)	Support for City Gallery's Hilma af Klint exhibition programmes.	2,000	Evans	ART
F	Featherston Booktown Trust	Support to deliver Karukatea Annual Festival.	1,000	Nikau Community	ART
	Featherston Community Centre Charitable Trust	Funding to support community centre operating expenses.	2,000	Evans	COM
	First Karori Scout Group	Capital expenditure to upgrade equipment.	5,400	Zac Pearson	COM
	Foster Hope Charitable Trust	Purchase of backpacks, pyjamas and other necessities.	5,000	Anonymous	CAB
	Foureyes Foundation Ltd	Funding to support operations for Wellington eyecare clinics.	2,000	Wise	HEA
	Foureyes Foundation Ltd	Support for volunteer engagement.	5,000	Anonymous	HEA
	Freedom Living Charitable Trust	Salary support for trust manager role.	2,000	Evans	DSB
	Friends of Taupo Swamp and Catchment Inc.	Purchase of 20ft container.	1,000	Nikau Porirua	ENV
	Friends of Taupo Swamp and Catchment Inc.	Salary support for volunteer assistant role.	5,000	Nikau Porirua	ENV
G	Garden to Table Trust	Salary support for local coordinator role.	4,000	Margaret Neave	YOU
	Gillies McIndoe Research Institute	Travel and accommodation costs for patients.	5,000	Margaret Neave	HEA
	Good Bitches Trust	Support to deliver Baking it Better programme.	1,300	Nikau Community	COM
	Greenstone Doors Charitable Trust	Funding to employ a fundraiser.	3,500	Margaret Neave	FAM
	Greytown Music Group	Support to deliver annual music programme.	800	Milne	ART
H	He Korowai Whakapono (Prison Fellowship Aotearoa)	Support to deliver Ngā Manu Rere reintegration programme.	5,000	Anonymous	COM
	Heart Kids Wellington	Salary support for family support worker roles.	4,000	Margaret Neave	CAB
	Holdsworth Restoration Trust	Funding to support Atiwhakatu Trapping Project.	2,000	Evans	ENV
	Holocaust Centre of New Zealand Inc.	Exhibition support for The Life Story of Anne Frank – Let Me Be Myself.	5,000	Anonymous	ART
	Hospice Wairarapa Community Trust Board	Purchase of inpatient bed.	1,500	Mace	HEA
	House of Science Wairarapa Charitable Trust	Support for House of Science Wairarapa's operating expenses.	3,000	Evans	EDU

“Thanks to our grant from Nikau Foundation, we were able to maintain our central Wellington office space as a hub of activity for rainbow communities. This created opportunities to support wellbeing for over 120 rainbow young people who were able to connect with InsideOUT and OuterSpaces through attending peer support groups and volunteering.”

Henrietta Bollinger, InsideOUT

	House of Science Wairarapa Charitable Trust	Funding to support organisational expansion.	1,200	Bice Tennyson	EDU
	House of Science Wairarapa Charitable Trust	Funding to support organisational expansion.	7,500	Nikau Porirua	EDU
	HUHA – Helping You Help Animals Trust	Purchase of vet clinic anaesthetic machine.	1,250	Willows	ANM
	Hutt City Budget and Advocacy Service	Support to hire assistant coordinator.	5,000	Tindall	FAM
I	Ignite Sport Trust	Support to deliver Fusion programmes.	3,500	Jocelyn Vogel	RMI
	Incredible Families	Operational support for Incredible Years parenting programme.	5,000	Tindall	FAM
	InsideOUT Kōaro	Funding to support Wellington office rent.	7,000	Blake	RAI
	Institute of Registered Music Teachers of New Zealand	Support for educational activities.	10,000	Judith Clark	ART
K	Kāpiti Impact Trust	Operational support for Challenge for Change youth programme.	2,500	Evans	YOU
	Kāpiti U.S. Marines Trust	Operational support for Queen Elizabeth Park.	500	Laurie Bushell	HER
	Karori Association Inc.	Funding to support Wrights Hill Reserve and Karori Stream.	2,000	Zac Pearson	ENV
	Karori Community Toy Library Inc.	Support for Karori Toy Library rebrand.	1,000	Zac Pearson	CAB
	Karori West Scout Group	General expenditure to support scout programme.	5,400	Zac Pearson	CAB
	Keep Hutt Valley Beautiful Trust	Purchase of volunteer safety equipment.	2,500	Jocelyn Vogel	ENV
	Kidz Need Dadz Charitable Trust Wellington (Inc.)	Operational support for educational evenings.	870	Evans	FAM
	Kidz Need Dadz Charitable Trust Wellington (Inc.)	Funding to generate educational material.	2,500	Evans	FAM
	KidzStuff Theatre for Children Inc.	Support for 2021 theatre season.	1,250	Elma Coxon	ART
	Kiwi Community Assistance Charitable Trust	Salary support for CEO role.	5,000	Nikau Porirua	COM
	KiwiClass Multicultural Support Services	Funding to deliver Storytelling through Photography programme.	5,000	Tindall	RMI
	KYS One Stop Shop Trust	Funding to support youth rep programme.	5,000	Anonymous	YOU
L	Laura Saxon Jones	Scholarship to support dancers transitioning into administrative roles.	9,500	Warren Douglas	ART
	Learning Disabilities Association Wairarapa Inc.	Funding to support students with learning disabilities.	2,500	Evans	DSB
	Leukaemia & Blood Cancer New Zealand	Salary support for support services administrator role.	2,000	Wise	HEA
	Leukaemia & Blood Cancer New Zealand	Support for blood cancer patients and families.	7,626	Freeman	HEA
	Life Education Trust – Wairarapa, Tararua and Central Hawke’s Bay	General operating costs including educator salaries.	2,000	Mace	EDU

	Life Education Trust – North Wellington	General operating costs including educator salaries.	5,000	Nikau Porirua	EDU
	Life Education Trust – Wellington City	Support to deliver education programme.	3,000	Margaret Neave	EDU
	Lifeline Foundation Charitable Trust	Operational support for Lifeline services.	1,800	Anonymous	HEA
	Literacy Aotearoa Charitable Trust	Support for Lower Hutt office rent costs.	2,000	Jocelyn Vogel	EDU
	Literacy Aotearoa Charitable Trust	Support to deliver adult literacy programmes.	2,000	Evans	EDU
	Little Sprouts Charitable Trust	Purchase of items for baby packs.	1,800	Anonymous	CAB
M	Makara Peak Mountain Bike Park Supporters Inc.	Operational support to maintain Zac's Track.	10,801	Zac Pearson	COM
	Make a Wish Foundation of New Zealand Trust	Salary support for wish coordinator role.	5,000	Margaret Neave	CAB
	Mana Special Needs Children's Trust	Funding to support service delivery.	5,000	Nikau Porirua	DSB
	Māori Womens Welfare League, Ngāti Toa Branch	Support to create branch history booklet.	3,000	Nikau Porirua	HER
	Mata O Ali'i Trust	Support for Le Ta Va'a canoe-building project.	2,500	Nikau Porirua	COM
	Mountains to Sea Wellington Trust	Operational support for marine and freshwater education programmes.	2,000	Evans	ENV
N	Naenae Youth Charitable Trust	Salary support for female coach and intern.	7,000	Blake	YOU
	Nature School New Zealand Trust	Operational support to deliver Bush Sprouts programme.	1,000	Bice Tennyson	EDU
	New Zealand Festival	Support to deliver Pari-a-rua youth festival.	2,000	Evans	ART
	New Zealand Opera Ltd	Operational support to run Wellington office.	1,000	Milne	ART
	New Zealand Red Cross	Funding to support delivery of engagement pilot projects.	2,000	Margaret Neave	YOU
	New Zealand Red Cross	Support to deliver former refugee trauma recovery service.	5,000	Kevin and Julia O'Connor	RMI
	New Zealand School of Dance	Support for contemporary VR film project.	7,780	Willscott	ART
	New Zealand Speech Board	Scholarship to support speech diploma examination costs.	1,000	Laurie Bushell	EDU
	Newtown Community and Cultural Centre 2009 Trust	Purchase of new chairs.	1,500	Evans	COM
	Ngā Uri o Whiti Te Rā Mai Le Moana Trust	Operational support for salaries and office space.	10,000	Nikau Porirua	RAI
	Ngā Uruora Kāpiti Project Inc.	Support to deliver pest control programmes.	1,500	Evans	ENV
	Ngatiawa Retreat Trust	Funding to deliver event programme.	1,000	Tindall	EDU
O	Oasis Community Cafe Trust	Support to hire a manager.	10,000	Nikau Porirua	DSB
	Otari-Wilton's Bush Trust	Funding to deliver centennial book project.	1,500	Evans	ENV
P	Pacifica Inc.	Support to deliver personal development programmes.	3,000	Nikau Porirua	WOM
	Pacifica Inc.	Support to deliver personal development programmes.	3,000	Tindall	WOM
	Paekākāriki Informed Community Inc.	Funding to upgrade premises.	2,000	Evans	COM
	Paraparaumu College	Funding to purchase costumes for supported learning programme concert.	1,083	Kāpiti Disability Support	DSB
	Parent to Parent New Zealand Inc.	Support to deliver outreach programme.	5,000	Anonymous	FAM
	Parenting Place Charitable Trust	Operational support for life skill and wellbeing presentation.	1,600	Nikau Youth	FAM
	Partners Porirua Trust	Support to deliver Drive4Life programme.	7,500	Tindall	YOU

“Without a doubt, the funding received from the Nikau Foundation has played a vital part in ensuring that our heart families, new and existing, have received the tailored support needed to help them deal with the mentally, physically and financially challenging times being faced.”

Alison Black, Heart Kids Wellington

People First New Zealand Inc.	General operational expenses including workshop delivery in Wairarapa.	1,500	Mace	DSB
People First New Zealand Inc.	General operational expenses including workshop delivery in Mana.	2,500	Nikau Porirua	DSB
People First New Zealand Inc.	General operational expenses including workshop delivery in Kāpiti.	2,790	Kapiti Community Enterprises	DSB
Pinikilicious	Support to deliver Pinikilicious breast screening awareness events.	3,000	Nikau Porirua	HEA
Porirua Anglican Parish	Purchase of groceries.	2,500	Nikau Porirua	COM
Porirua Living Without Violence	Transport costs to and from tamariki programme.	5,000	Nikau Porirua	FAM
Porirua MenzShed Inc.	Funding to build a workshop pergola.	2,000	Evans	COM
Porirua Pasifika Community Patrol	Operational funding to support volunteer and vehicle costs.	5,000	Nikau Porirua	COM
Predator Free – Miramar	General operating expenses to deliver educational trapping programme.	1,000	Evans	ENV
Predator Free – Pukerua Bay	Purchase and installation of traps, bait and signage.	1,500	Nikau Porirua	ENV
Predator Free – Wellington	Operational support for programme delivery.	1,800	Anonymous	ENV
Presbyterian Support Central	Purchase of recreational resources for Kandahar homes.	2,000	Mace	OGE
Presbyterian Support Central	Operational support to deliver digital literacy programmes.	6,624	Margaret Neave	OGE
R Rebekah Jenkins	Scholarship to support youth leadership and community involvement.	3,000	Win Hastings	EDU
RespectEd Aotearoa	Salary support for programme manager role.	1,500	Evans	HEA
Royal Forest and Bird Protection Society of New Zealand	Operational support to deliver Johnsonville pest control project.	1,000	Bice Tennyson	ENV
Royal Forest and Bird Protection Society of New Zealand	Funding to build infrastructure for Wainuiomata native plant nursery.	1,250	Pegasus	ENV
Royal New Zealand Plunket Trust	Operational support to deliver Porirua whānau connect programme.	1,500	Robson	FAM
Royal Numismatic Society of New Zealand Inc.	Support to deliver RNSNZ/OMRS conference.	2,500	Alistair Robb	EDU
S Samaritans of Wellington Inc.	General operational costs including venue hire, parking, heating and lighting.	4,712	Margaret Neave	HEA
Samaritans of Wellington Inc.	General operational costs including wages and event delivery.	7,780	Willscott	HEA
Save the Children New Zealand	Support to deliver Fiji agriculture and food security programme.	4,000	Margaret Neave	COM
Shakespeare Globe Centre New Zealand Trust	Funding to secure technical crew for national Shakespeare festival.	500	Laurie Bushell	ART
Shelter Masterton Inc.	Funding to build a wheelchair ramp at transitional housing facility.	2,500	Evans	COM
Siufofoga o le Laumua Trust	Salary support for social media interns at Samoa Capital Radio.	5,000	Nikau Porirua	COM

Skylight Trust	Operational support to deliver community outreach response programme.	1,000	Evans	COM
Skylight Trust	Operational support to deliver Skylight counselling programme.	1,800	Anonymous	FAM
Society of St Vincent de Paul Plimmerton Conference	Purchase of food bank groceries.	3,000	Nikau Porirua	COM
Society of St Vincent de Paul Wellington Area Council	Salary support for welfare and services coordinator role.	1,000	Jessie, Elma and Adam Coxon	COM
Special Olympics Kāpiti	Funding to support travel and accommodation for summer games.*	5,000	Kāpiti Community Enterprises	DSB
Special Olympics Mana	Operational support to cover equipment storage costs.	1,320	Nikau Porirua	DSB
St Andrew's on The Terrace Presbyterian Church	Funding to assist with croft pipe organ restoration.	5,000	Margaret Neave	HER
St John's Church, Parish of Johnsonville	Funding to purchase groceries for St Anne's Pantry initiative.	10,000	Nikau Porirua	COM
St Mark's Church of Carterton	Operational support for Seasons for Growth grief programme.	3,000	Carterton	FAM
Stillbirth and Newborn Death Support Wellington	Funding to support bereaved parents support programme.	1,000	Nikau Community	FAM
Stroke Central Region	Operational support to deliver Sit & Be Fit programme.	2,000	Evans	HEA
Supporting Families New Zealand Ltd	Funding for expansion of mental illness and addiction education programme.	2,500	Evans	FAM
Sustainability Trust	Purchase of trees and planting materials for Fruit Tree Guardians programme.	2,000	Evans	ENV
T Taiohi Morehu	Operational support to deliver events for rainbow youth.	2,000	Blake	RAI
Te Ara Moana Trust	Operational support to deliver Te Ara Moana programme.	2,000	Blake	YOU
Te Ara Moana Trust	Operational support to deliver Te Ara Moana programme.	5,000	Nikau Porirua	YOU
Te Ātiawa Ki Whakarongotai Charitable Trust	Funding to deliver community connection initiatives.	5,000	Anonymous	COM
Te Kaunihera Kaumātua o Toa Rangatira	Support for kaumātua heritage project.	4,000	Nikau Porirua	HER
Te Kura o Papatūānuku Wairarapa Earth School Charitable Trust	Operational support to deliver Healthy Kai in Schools project.	2,000	Carterton	COM
Te Omanga Hospice Trust	Purchase of medical consumables.	1,500	Mace	HEA
Te Puna Mātauranga o Ngāti Toa Rangatira	Support to fund Mana Island overnight trip.	2,500	Tindall	COM
Te Puna Mātauranga o Ngāti Toa Rangatira	Funding to purchase items for asthma service warm winter project.	5,000	Nikau Porirua	HEA
Te Puna Mātauranga o Ngāti Toa Rangatira	Funding to purchase diabetes meters.	5,000	Nikau Porirua	HEA
Te Rūnanganui o Te Ātiawa ki te Upoko o te Ika a Māui Inc.	Support to maintain breast pump service.	1,000	Jocelyn Vogel	FAM
The CanInspire Charitable Trust	Support to deliver CanBead workshops.	2,480	Wise	COM
The Common Unity Project	Support for the Hutt Valley Emergency Kai Collective.	2,500	Jocelyn Vogel	COM
The Common Unity Project	General operating costs.	1,800	Anonymous	COM
The Common Unity Project	General operating support including administration and communications.	8,000	Tindall	COM

* The 2021 summer games were postponed due to COVID-19. Instead, this grant was used to purchase team uniforms.

“The grant from Nikau Foundation has helped to ensure we can keep making a positive change, empowering women with vital information on health risks and services available to them.”

Caroline Mareko, Pinikilicious

The House of Grace Trust Inc.	Salary support for area supervisor salary.	2,000	Blake	FAM
The Life Flight Trust	Funding to support training for Life Flight teams.	2,000	Anonymous	HEA
The Lower Hutt Women’s Centre Inc.	Salary support for volunteer coordinator role.	3,500	Jocelyn Vogel	WOM
The Mahara Gallery Trust	Support for gallery redevelopment project.	2,000	Nikau Kāpiti	ART
The Malaghan Institute of Medical Research	Funding to support translational immunology research.	10,000	Margaret Neave	HEA
The Mary Potter Hospice Foundation	Funding to support delivery of clinical services.	1,500	Mace	HEA
The Mary Potter Hospice Foundation	Operational support to deliver Enhanced Hospice at Home programme.	2,307	Lyon	HEA
The Mary Potter Hospice Foundation	Operational support to deliver Enhanced Hospice at Home programme.	8,000	Nikau Porirua	HEA
The Neonatal Trust – Wellington	Funding to support and engage volunteers.	5,000	Anonymous	HEA
The Nest Collective New Zealand Charitable Trust	Purchase of baby packs.	2,500	Jocelyn Vogel	FAM
The Nest Collective New Zealand Charitable Trust	Purchase of baby packs.	5,000	Nikau Porirua	FAM
The New Zealand Portrait Gallery Trust	Operational support to implement PatronBase CRM.	1,000	Laurie Bushell	ART
The Orpheus Choir Of Wellington Inc.	Support to deliver 2021 performance programme.	2,000	Milne	ART
The Parkinson’s New Zealand Charitable Trust	Funding to deliver education and support to Parkinson’s patients and families.	2,000	Wise	HEA
The Porirua Little Theatre Inc.	Support to hire pop-up theatre venue.	5,000	Nikau Porirua	ART
The Salvation Army New Zealand Trust	Salary support for Tawa-based social worker role.	2,900	Francis and Dianne Small	COM
The Salvation Army New Zealand Trust	Salary support for Tawa-based social worker role.	5,000	Margaret Neave	COM
The Shift Foundation	Salary support for Porirua shift coordinator role.	7,000	Tindall	WOM
The Wellington City Mission (Anglican) Trust Board	Purchase of sensor care mats for Kemp House.	1,298	Mace	COM
The Wellington City Mission (Anglican) Trust Board	Support to upgrade Wellington Night Shelter.	1,500	Robson	COM
The Wellington City Mission (Anglican) Trust Board	Support to deliver community Christmas support services.	1,696	Willows	COM
The Wellington City Mission (Anglican) Trust Board	Salary support for community development manager role.	2,900	Francis and Dianne Small	COM
The Wellington City Mission (Anglican) Trust Board	Salary support for community development manager role.	7,500	Jessie, Elma and Adam Coxon	COM
The Wellington Multiple Sclerosis Society Inc.	General operational costs including education and class delivery.	3,000	Wise	HEA
The Whitireia Foundation	Whitireia student scholarships.	20,000	Nikau Porirua	EDU

	ThroughBlue	Support to deliver depression and anxiety support groups.	1,500	Robson	HEA
	Transition Town Ōtaki Trust	Purchase of storage container for Zero Waste Ōtaki initiative.	2,500	Evans	ENV
U	United Nations Association of New Zealand (UN Youth New Zealand)	General operational support including office space, website and professional services.	3,000	Margaret Neave	YOU
	Upper Hutt Community Youth Trust	Support to deliver Dream Kings youth programme.	2,000	Tindall	YOU
	Upper Hutt Women's Centre Inc.	Operational support for counselling and family violence workshops.	2,500	Evans	WOM
V	Vincents Art Workshop Inc.	Salary support for art tutors.	1,000	Nikau Community	ART
	Virtuoso Strings Charitable Trust	Purchase of new piano.	1,000	Milne	ART
	Vogelmorn Community Group Charitable Trust	Support to develop zero waste community space.	1,000	Tindall	ENV
	Volunteer Kāpiti Inc. 2020	Funding to support relocation and development of new space.	1,000	Nikau Kāpiti	COM
	Volunteer Service Abroad Te Tūao Tāwāhi Inc.	Funding to develop e-volunteering programme.	5,000	Margaret Neave	COM
	Vulnerable Support Charitable Trust	Operational support to run Take 10 support zone.	2,500	Tindall	YOU
W	Wairarapa Archival Society Inc.	Funding to reprint <i>On the Edge: Wairarapa Coastal Communities</i> .	1,888	Gustofson	HER
	Wairarapa Search & Rescue Inc.	Funding to purchase WandaTrak pendants.	2,000	Zac Pearson	COM
	We Care Kiwi	Supporting the development of the wecare.kiwi website.	3,000	Evans	COM
	WellElder Counselling Trust	Operational support to deliver counselling services to older people.	2,000	Wise	OGE
	WELLfed New Zealand Trust	Salary support for logistics manager role.	8,000	Tindall	COM
	Wellington After-Care Association Inc.	Funding to support 10th anniversary event.	1,180	Evans	COM
	Wellington Boys' and Girls' Institute	Supporting the delivery of Te Ahi o Ngā Rangatahi programme.	1,000	Tindall	YOU
	Wellington Early Intervention Trust	Salary support to deliver music therapy programme.	1,000	Evans	CAB
	Wellington Early Intervention Trust	Salary support to deliver music therapy programme.	5,000	Anonymous	CAB
	Wellington Free Ambulance Service Inc.	General operational support.	2,000	Mace	HEA
	Wellington Homeless Women's Trust	General operational support including additional support hours and house costs.	5,000	Tindall	WOM
	Wellington Hospitals Foundation	Funding to support the build of the new Wellington Regional Children's Hospital.	10,000	Margaret Neave	HEA
	Wellington Hospitals Foundation	Funding to support the build of the new Wellington Regional Children's Hospital.	30,000	Kevin and Julia O'Connor	HEA
	Wellington Land Search and Rescue Inc.	Support to upgrade remote communications devices.	2,500	Zac Pearson	COM
	Wellington Natural Heritage Trust Inc.	Support to deliver pest, plant and animal control programmes in Makara.	1,250	Pegasus	ENV
	Wellington Sexual Abuse Help Foundation	Salary support for office administrator role.	10,000	Nikau Porirua	HEA
	Wellington Society for the Prevention of Cruelty to Animals Inc.	Salary support for animal welfare inspectorate team.	1,000	Willows	ANM
	Wellington Treasure Trust	Support to deliver 2021 Verb Festival and LitCrawl.	500	Nikau Community	ART

	Wellington Volunteer Centre	Salary support for member services manager.	3,000	Evans	COM
	Wellington Youth Orchestra Inc.	Support for player fees.	1,250	Pegasus	ART
	Wellington Youth Orchestra Inc.	Support for player fees.	3,519	Savage	ART
	Wesley Wellington Mission Inc.	Support to extend Te Roopu Tiaki Rangatahi youth programme.	4,500	Jessie, Elma and Adam Coxon	YOU
	Whare Manaaki Inc.	Operational support for women's safety programmes.	3,000	Nikau Porirua	WOM
	Wharekaka Trust Board Inc.	Funding to reseal and resurface driveway.	2,500	Evans	OGE
	Women of Worth Charitable Company Ltd	Support to deliver Move Up programme.	2,000	Caroline Boyd	WOM
	Women of Worth Charitable Company Ltd	Support to deliver Move Up programme.	2,500	Jocelyn Vogel	WOM
	Women's Boarding House Inc. – Wellington	Funding to help vulnerable women secure employment.	5,000	Tindall	WOM
	Write Where You Are Trust	Salary support for teachers facilitating prison creative writing classes.	2,000	Evans	COM
Y	Younger Onset Dementia Aotearoa Trust	Funding to supply lunch at YODAT day programmes.	2,000	Wise	HEA
	Youth Development Trust Wellington	Support to deliver Stars and Career Navigator programme.	7,500	Nikau Porirua	YOU
	YOUth Inspire	Purchase of thank you gifts for volunteer mentor drivers.	2,000	Tindall	YOU
Z	Zeal Education Trust – Wellington	Operational support to connect and support young people.	5,000	Anonymous	YOU
	Zeal Education Trust – Kāpiti	Salary support for drug and alcohol counsellor.	3,000	Zac Pearson	YOU
	Zeal Education Trust – Kāpiti	Funding to run youth engagement events in Ōtaki.	5,000	Tindall	YOU
TOTAL			902,834		

Total distribution breakdown

Nikau endowment grants	576,395
Anonymous grants	117,583
Tindall Foundation grants	103,000
Perpetual Guardian grants	105,856

Net distribution	902,834
-------------------------	----------------



Image Credit: Kaibosh Food Rescue.



A simple, practical solution to alleviate food insecurity

Things happen fast at Kaibosh Food Rescue's busy Hopper Street premises. Within the space of 10 minutes, one truck has been unpacked and the food sorted, repacked and stored ready for dispatch later that day.

This pace is not out of the ordinary, says General Manager Matt Dagger. In fact, with the sheer volume of food Kaibosh receives and the huge demand for the services it offers, this process is repeated throughout each day, seven days a week.

The idea for Kaibosh was formed when Founder Robyn Langlands received a call from hospitality company Wishbone while she was volunteering for Women's Refuge. Wishbone had plenty of surplus food and wondered whether Women's Refuge needed it. It was at this time that Robyn started to think about finding a solution to address the growing problems of food waste and food insecurity. Kaibosh was then founded in 2008 as a conduit between businesses willing to donate food and community organisations in need of extra support.

For Kaibosh, keeping up with demand meant it quickly outgrew its first hub located at the back of Wesley Methodist Church in Te Aro. This accelerated upscaling left founders Robyn and George Langlands

looking for a way to ensure sustainable growth. With the help of a Nikau Foundation grant, Kaibosh invested in some strategic planning – a move that would set the blueprint for all of its future operations and strategic approach.

“This consultancy gave Kaibosh direction and helped us to prepare for any obstacles that may come our way. It got us through when our Tennyson Street hub was destroyed during the Kaikōura earthquake in 2016, it is getting us through COVID-19” says Matt.

Since 2008, Kaibosh has rescued over 2 million kilograms of food, provided over 6 million meals to community organisations addressing food insecurity in their local communities and contributed almost 650,000 kilograms of carbon emissions reduction.



Making eyecare more accessible for Kiwi kids

One in 10 Kiwi kids has issues with their vision. Most will be diagnosed and treated, but for the children who do not receive the help they need, it can have lifelong impacts on education, employment and self-confidence.

Wellington-based optometrist Ravi Dass had just returned from a stint volunteering in clinics in Fiji when he came up with the idea for the Foureyes Foundation. He was working in his Haitaitai-based clinic and seeing first-hand the effect inaccessible eyecare was having.

“Often parents or teachers may not know how to spot symptoms of an eye condition. This, as well as factors such as lack of accessibility to an optometry clinic or the high cost of glasses, means that a lot of children don’t get the help they need,” explains Ravi.

The start of a movement

Piloted at Titahi Bay School in 2016, the Foureyes Foundation helps to remove barriers to eyecare by providing free vision screening, eye testing and glasses in communities that need them the most. Since then, it has established four clinics, screened over 4,000 kids and helped to identify eye issues for over 400 Kiwi kids. The Foureyes Foundation recently expanded to Dargaville and has ambitious growth plans.

“Unfortunately, with factors such as increased screen time, eye issues are only going to become more prevalent. Having a mechanism to catch eye issues early will become more and more important,” says Ravi.

A sustainable revenue stream

With such a demand for free eyecare, it was important for Ravi to find a way to safeguard the delivery of the Foureyes Foundation’s services.

“The biggest community need tends to be in regional areas that have poor access to services. Unfortunately, funding initiatives in these areas typically come at a high cost for charities, which is further exacerbated when the need is ongoing. One of our strategic goals is to become more self-sustainable, which is where Nikau Foundation comes in.”

“Establishing the Foureyes fund means we have a reliable funding stream so we can grow and deliver services to more communities in need. Nikau Foundation takes care of everything from administration to investment, so we can focus on delivering our mission,” says Ravi.

Our community – Kāpiti

Our vision for Kāpiti

To create a region with strong, resilient and empowered communities.

As a long-time resident of Kāpiti, I was impressed to see how locals came together to support each other during the year, with community organisations playing a key role in creating connections. This year, we were pleased to support several organisations, including Special Olympics Kāpiti, People First and Zeal Education Trust, that are doing great work to empower and support our communities.

In May, we were honoured to welcome former Governor-General Sir Jerry Mateparae to the Kāpiti Boating Club for an evening of conversation hosted by Corran Crispe. This fascinating evening was one of the first in a series of local engagement events we hope to host for our Kāpiti communities and members of the Nikau family.

This year, we have been pleased to see more donors and organisations partnering with Nikau Foundation to ensure they can support communities throughout Kāpiti long term. In the Rotarian spirit of ‘service above self’, the newly established Rotary Club of Ōtaki fund will support the people and places of Ōtaki forever, while the Kāpiti Disability Support Fund will help to provide accommodation and resources to people experiencing disability long into the future.

Ngā mihi

Mike Olsen

Chair, Kāpiti Committee

“Without the support from granters such as Nikau Foundation, opportunities such as the National Summer Games just wouldn’t be possible. We are entirely volunteer run, and such funding allows us to provide hugely impactful opportunities for our athletes.”

Anne Cheetham, Special Olympics Kāpiti

Volunteers

Mike Olsen (Chair)*

Tim Burns

Shirley Clarke

Adrian Gregory

Liz Koh

Rod Lingard

Richard Mansell



\$49,055

pledged to create transformational change in Kāpiti during 2020/21.

* We would like to acknowledge the passing of Mike Olsen in January 2022. Mike was passionate about the development of Kāpiti and worked tirelessly in partnership with Nikau Foundation to effect lasting change throughout the region. We also thank Mike and his wife Margaret who have created a legacy for youth in the region through the Mike and Margaret Olsen Fund. **Thank you.**



Offering sustainable support to disabled communities

Established in 1986, the Kāpiti Welcome Trust was created to address shortcomings in accommodation and service offerings for disabled communities. Ex Trustee Rod Lingard says, “In the late 1980s, many people experiencing some kind of physical disability were living in unacceptable or unsuitable conditions. Many of their parents were concerned about their children’s welfare and how they would be supported once they were gone.”

Supporting mental and physical wellbeing

With this need in mind, the Kāpiti Welcome Trust was established to provide for the wellbeing of people with disabilities through the provision of quality, well-maintained accommodation.

The Trust purchased 31 Bluegum Road in 1988 – a section that was divided into 10 lots with nine units constructed. In line with the Trust’s vision to provide for the social and vocational needs of their residents, the premises includes a recreational hall. “This is a hugely beneficial part of the property. It provides the opportunity for residents to connect, make friends and keep active,” says Rod. “It helps to enable participation in

the community, which is crucial for sound health and wellbeing for residents.”

The homes and their residents are now supported by the MASH Trust, which facilitates more-personal support for residents, working closely with them to create employment opportunities and deliver professional and personal development services.

Enduring trusteeship

In late 2020, the Trustees re-evaluated how they could best serve the needs of both the Trust and the communities they served in the future, and the Kāpiti Disability Support Fund was established in December 2020.

“We made the decision to transfer the Trust to Nikau Foundation to ensure we can keep delivering our founding vision,” says Rod. “We were particularly drawn to Nikau Foundation’s enduring trusteeship offering – It gives us immense confidence that, even in 50 years’ time, our funds will be well cared for and managed and our communities will continue to be supported.”



Celebrating 50 years of the Rotary Club of Ōtaki. 2014.

A valuable asset for the future of Ōtaki

It's not hard to fall in love with Ōtaki, says Rotary Club of Ōtaki President Adrian Gregory. "Ōtaki epitomises a community that is active and interconnected with a strong sense of doing things right for its people – the health, wellbeing and manaakitanga of the around 9,000 people who live here," he says.

A long history of community service

The Rotary Club of Ōtaki has a long and impressive history in the region. Recognised by Rotary International in 1964, it is one of 35,000 clubs worldwide working to create lasting change in their communities.

Throughout its long history, the club has been involved in many humanitarian and community-focused initiatives locally and internationally. It is now in its 10th year of providing meals to competitors and supporters of the Big Bang Adventure Race, has sponsored dozens to take part in Rotary's Young Leaders programme and is a long-time supporter of Healthy Heroes – an initiative promoting physical activity for youth.

"Our ongoing work in the community is testament to the continued relevance of Rotary and the impact we are still having on local communities – even 60 years later," says Adrian.

A move to preserve impact

Following the sale of the club's meeting hall in late 2020, it started to look for a way to future-proof its impact as a club. After reviewing a number of options, it decided that Nikau Foundation was a great fit to ensure the club's long-term financial sustainability.

"Partnering with Nikau Foundation means ensuring we can continue to support local projects, causes and initiatives well into the future," says Adrian. "Having a fund means that, no matter the challenges that Ōtaki faces in future, Rotary is poised to support the community long-term."

The Rotary Club of Ōtaki Fund is designed to benefit the community in a number of ways, from supporting youth development to fostering the arts. Adrian says, "The role of the fund in the development of Ōtaki will be determined by staying connected, listening to what the community needs and playing our part in fulfilling those needs."

Our community – Porirua

Our vision for Porirua

To work together to create a happy, healthy Porirua region.

In another extraordinary year for Aotearoa, it was amazing to see Porirua’s community spirit shining through. During the August lockdown, we made some small grants to organisations working on the frontline, including Whare Manaaki Women’s Refuge and St Anne’s Pantry. Seeing how quickly they responded to the needs of our community was awe inspiring.

In May, we were particularly delighted to fund many incredible organisations working to bring our communities together. These included Pinikilicious – a brilliant initiative focused on championing women’s health, Atafu Tokelau Community Group – an organisation encouraging the endurance of Tokelauan language and culture – and Cycle Safe Porirua, which is making fitness fun for Porirua locals.

In September, we partnered with Wellington Community Trust to co-fund the establishment of a hub for rainbow youth through Ngā Uri o Whiti Te Rā Mai Le Moana Trust. The first of its kind in Porirua, this hub will create a safe, inclusive space to foster a sense of belonging. This project is a great example of the power of collaboration when creating meaningful change. He waka eke noa – we’re all in this together.

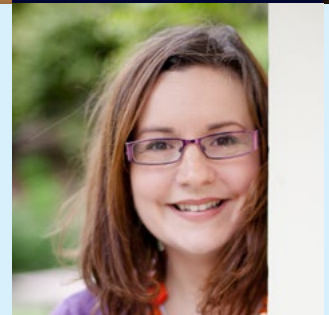
I would like to thank members of our Nikau whānau and dedicated committee volunteers for their valuable contributions and support in 2021.

Ngā mihi nui

Rebecca Morahan
Chair, Porirua Committee

Volunteers

Rebecca Morahan
(Chair)
Colin Bleasdale
Eleanor Cater
Numalani Fonoti
Jess Reiher
Sue Shotter
Ranei Wineera-Parai



\$248,827

pledged to create transformational change in Porirua during 2020/21.

“Unfortunately, due to the financial impact of COVID-19, we required additional support from funders such as Nikau. We are immensely grateful for this funding, which will allow us to meet our operational costs and continue our work within the Tokelauan community.”

Les Tenise Atoni, Atafu Tokelau Community Group



Connecting our communities through fitness and fun

Creating a warm, supportive environment for cycling

“We’re known as ‘that loud cycle group,’” says Cycle Safe Porirua (CSP) Founder Findlay Siania. “The banter and laughs we have during our rides is amazing!”

With the kaupapa of making cycling as accessible as possible, CSP creates fun opportunities to exercise and engage with members of the community.

“There are no real rules here – you can wear what you want, come and go as you want and go at your own pace,” says Findlay. “We’re all about creating a welcoming, supportive environment and removing as many barriers for participation as possible.”

CSP’s journey started in October 2018 when Findlay and his family held their first ride with a friend looking to improve his health. What started as a one-off quickly turned into rides taking place on Wednesdays, Saturdays and Sundays attended by a network of 70–80 people. All rides are organised via a CSP Facebook page and take place on tracks across the Greater Wellington region, including the Remutaka, Pencarrow and Shelly Bay bike trails.

CSP welcomes riders of all shapes, sizes, ethnicities and abilities. “Some of our riders have told us that, because of their weight, they feel intimidated to join one of the more professional groups and find CSP to

be a fun, social and supportive environment,” says member Taima Fagaloa.

In early 2020, Cycle Safe Porirua sought funding to purchase an e-bike, allowing riders to participate in cycling for the first time, no matter their previous cycling experience or fitness level. Nikau Foundation gave \$3,500 from the Porirua Fund to support this purchase. “The e-bike has provided plus-size riders with an opportunity to participate in cycling for the first time,” says member Shane Lauulu. “During the tougher rides, the e-bike is used by our lead riders so they can cycle back and forth, ensuring that our riders from the first rider to the last are receiving support and are being checked for health and safety purposes.”

“The Nikau grant has provided us with confidence to ensure we are well equipped to continue to serve our communities through cycling. It has addressed social isolation and improved the physical and mental health of our riders,” says Findlay.



\$185,055 given to connect and support our communities.



Empowering women to take charge of their health

Creating a safe, comfortable space for difficult conversations

With more than 30 years' experience working in education and volunteering for community causes such as Porirua's Pacific Community Patrols, Porirua Pacific Services Network and the Pacific Education Plan, Pinikilicious Co-Founder Caroline Mareko knows how to make things happen. So when the question "What are we going to do about Pacific women's health?" came up, she knew exactly where to start.

Opening up communication channels

Statistically, Pacific women have a higher breast cancer mortality rate than any other ethnic group in New Zealand. This statistic is not correlated to a genetic predisposition but to a trend of late-stage diagnosis when treatment options are limited. Caroline knew that she and her volunteer team had to find an engaging way to encourage more breast screenings. Instantly, Caroline knew that the initiative had to be fun and accessible and have a name that reflected both of these things. "We knew that the word 'cancer' would need to be omitted – it would immediately scare people off," says Caroline. "Instead, we opted for 'Pinikilicious' – a fun, inviting name without any scary undertones."

A great day out

A Pinikilicious event follows a simple, relaxed format while creating a safe space in which women's health issues can be comfortably discussed. The attendees, of which there were 300 at their last event in April, are invited to listen to music, have lunch and indulge in a pampering session. "These pampering sessions provide the perfect, relaxed environment to talk about things that are traditionally quite difficult to bring up," says Caroline.

Exceeding local screening targets

Since its first event in 2011, Pinikilicious is proud to have directly referred over 750 women for breast screening – a statistic made more impressive by the fact that they're exceeding screening targets set by the district health board.

Nikau Foundation gave \$3,000 from the Porirua Fund to Pinikilicious to contribute to event operating expenses.

"The grant from Nikau Foundation has helped to ensure we can keep making a positive change, empowering women with vital information on their bodies, health risks and services available to them," says Caroline.

Our community – Wairarapa

Our vision for Wairarapa

Walking alongside our partners helping to strengthen our community.

This year, the Wairarapa Committee was delighted to reach a pivotal milestone – \$50,000 in the Wairarapa Fund, which will be invested and grown for the long-term benefit of our region. Achieving this milestone signals an exciting new chapter for us. It means that we will be in the position to grant to local community organisations in 2022 and will have the opportunity to deepen our impact locally. We would like to thank our network of regular givers such as Jaime Slater and Latasha Boyce, whose contributions prove that even small, regular donations have the capacity to create a ripple effect for sustained impact through the community foundations model.

It was fantastic to support many wonderful community organisations including House of Science Wairarapa, the Life Education Trust and Seasons for Growth during our 2021 grants round, and we look forward to extending our impact in 2022 with help from the Wairarapa Fund.

I would like to thank our dedicated Wairarapa Committee members, who, even in the face of uncertainty and changing alert levels, never missed a meeting. This is a testament not only to their belief in Nikau Foundation’s vision but also their commitment to effecting positive change locally. Thank you.

I would also like to welcome Wendy Morrison to the committee. With an extensive background in marketing and media, Wendy brings a wealth of skills and experience to the team.

Ngā mihi

Lucy McLaren

Chair, Wairarapa Committee

“Funding from the Nikau Foundation allowed House of Science to deliver our services to schools in the Wairarapa and to continue to grow.”

Amanda Taylor, House of Science Wairarapa

Volunteers

Lucy McLaren (Chair)

Sally Adams

Barbara Durbin

Bob Francis
(Ambassador)

Darrin Goulding

Bevan Morland

Wendy Morrison



\$61,542

pledged to create transformational change in Wairarapa during 2020/21.



Delivering life-changing coaching through the seasons of grief

Creating a welcoming environment

Working in partnership with local schools and social service agencies, Seasons for Growth Wairarapa offers a safe space for children, adolescents and adults to chat through and navigate significant life changes with the support of their peers and trained facilitators, known as ‘companions’.

Wairarapa Coordinator Alison Dye says, “From the outset, Seasons for Growth aims to create a welcoming environment to make talking about loss as comfortable as possible. Opening up can be a challenge for a lot of people so we put an emphasis on building up a foundation of trust.”

Alison says that the founder of the programme that inspired Seasons for Growth – recently canonised nun Mary MacKillop – believed that you shouldn’t see a need without doing something about it. “In our case, we have seen the impact grief has on people through our own personal experience and felt compelled to guide them through the various stages.”

Tailored peer support

Although every session is tailored to ensure an individual’s needs are met, even within a group setting, there are several messages that

underscore the wider programme format. “We try to communicate that feeling grief is normal, that the individual is normal but the situation they are going through is difficult. As the seasons do, these feelings will ebb and flow,” says Alison.

Nikau Foundation gave \$3,000 from the Carterton District Endowment Fund to Seasons for Growth to support ongoing operations.

For Alison, the impact of such a grant is immeasurable.

“It’s simple really. Grants like this make our work possible. There is no way we would be able to deliver such life-changing services in a way that makes it affordable for all of the people who want to participate without financial support from funders such as Nikau Foundation,” says Alison.



\$73,020 given to nurture families.



Kris Fielding

Empowering and enhancing the lives of people living with ‘diffability’

‘Diffability’ is not yet in the Oxford Dictionary but it should be, says Wairarapa resident Alan Fielding. He’s written to the Oxford University Press many times and will continue to write until the term – an amalgamation of ‘different’ and ‘ability’ – is included.

“It’s a term that removes the stigma traditionally associated with the word ‘disability’ and recognises the abilities and value every person has, no matter the cards they have been dealt in life,” says Alan.

Having the term officially recognised is important to Alan to honour his son Kris who was born with spina bifida in 1968 and sadly passed away in 1995.

Kris was a keen naval enthusiast and loved his role working in the registry of artefacts at Palmerston North’s Te Manawa Museum complex. He also admired the CCS bumper stickers proclaiming “We Can!” – a reflection of his zest for life and belief that everyone had the capacity to make something of their lives.

A foundation of education

A former environmental technology and environmental education lecturer at Palmerston North’s Massey University, Alan is a big believer in the power of education.

“Many times, Kris felt that he may not be as good as other people,” says Alan, “but it was through learning and the pursuit of his own passions that he realised his own value.”

Knowing this, Alan wanted to ensure that the next generation experiencing a diffability had the opportunity to unlock their potential through access to education.

A gift that will last forever

When he discovered Community Foundations of New Zealand, Alan had been looking for a way to make a gift to his community that would last forever. A quick call through to Nikau Foundation and his mind was made up – to create a fund in honour of Kris with a plan to give a gift in his will.

The Kris Fielding – We Can! Fund was established to support people to unlock their potential through education, enabling them to achieve equality, an independent lifestyle and better participation in the community.

“It is such a brilliant concept. Nikau Foundation’s model means that my gift can continue to provide education for generations to come. It means that people with a diffability can always stoke the fire around their dreams,” says Alan.

Laurie Bushell



Everlasting support for the arts

The long-term impact of a legacy

Ensuring a loved one is remembered can be done in many ways. It can be as simple as planting a tree, commissioning a bench in a place they loved or giving a gift in their name.

For Nikau Foundation donor Adrienne Bushell, acknowledging her late husband Laurie meant honouring their mutual love for the arts and shared interest in philanthropy. “We loved going to performances together,” says Adrienne. “Tchaikovsky was Laurie’s absolute favourite, and we were passionate about supporting the arts through our trust. Laurie was naturally generous and cared immensely about creating lasting change.”

Flexible support

When Adrienne came across Nikau Foundation, she was new to the community foundations model. “I found it almost by accident,” she laughs. However, she quickly discovered that it was the perfect way to make sure Laurie was celebrated.

The Laurie Bushell Fund was established in 2007 with the objective of supporting a few organisations close to her and Laurie’s hearts, such as the New Zealand Portrait Gallery, with flexibility to support the arts generally. “One thing I love about the arts is that it is constantly developing,” says Adrienne, “Thirteen years ago, I couldn’t imagine some of the creative things we would be seeing – fully digital productions,

holograms in the Wellington fountain – it’s amazing to how artistic expression changes as technology does!”

The fund’s flexible and varied scope has meant that the Laurie Bushell Fund has been able to support the arts in its many forms. This year, the fund gave a grant to Coasters Musical Theatre, supporting its season of *Mary Poppins* – the company’s biggest ever production. It also provided funding for the Shakespeare Globe Centre New Zealand, ensuring it had sufficient technical staff to run the annual national Shakespeare festival.

Over the years, the fund has supported the Orpheus Choir, Theatreview Trust and the U.S. Kāpiti Marines Trust.

Giving a voice to the next generation

Inspired to provide young people with opportunities to upskill and gain confidence, the Laurie Bushell Fund established a scholarship with Speech New Zealand in 2012. “The Nikau Foundation Scholarship provides funding for students to complete their associate or advanced associate qualifications,” says Speech New Zealand Executive Officer Emma Carpenter. While one scholarship recipient has gone on to successfully pursue a radio broadcast career, another will soon return to Speech New Zealand in a teaching capacity. “This is testament to the impact of the scholarship. It’s come full circle and will continue to impact more and more speech students.”

The Laurie Bushell fund continues to have an impact, making sure the arts scene he loved is nurtured forever.

Michael & Suzanne Borrin Foundation



The Michael & Suzanne Borrin Foundation provides support for legal research, education and scholarship.

Founded by the late Judge Ian Borrin in memory of his parents Michael and Suzanne, the Foundation believes that law is essential to a flourishing society and works towards an Aotearoa New Zealand that is just, inclusive, tolerant and free.

Nikau Foundation works in partnership with the Borrin Foundation, acting as the corporate trustee.

A look back on 2021

In 2021, we continued to fund projects that will help contribute to systemic change through the law. This included research projects on how the criminal justice system engages with young adults and a project to explore the current situation of women's prisons in New Zealand and propose an alternative model. We were also delighted to support Ngā Pūrākau Ture o Aotearoa – a free online video series that aims to bolster knowledge of Aotearoa New Zealand's legal history and encourage participation in society by helping people to understand the role and value of the law.

This year, we supported nine individuals within the legal community who will contribute to our shared vision of Aotearoa New Zealand. Our individual funding programme supports grantees to undertake further study, hone their leadership skills or build on their expertise. This year, we also announced a new scholarship in partnership with Ngā Pae o te Māramatanga to increase Māori postgraduate scholarship in law.

In 2021, we adopted a new strategic focus, undertaking a legal needs analysis with Citizens Advice Bureau. This research explores the type of legal assistance most frequently sought by New Zealanders. We look forward to receiving these findings in 2022 and hope that this research will inform access to justice policy and reform.

Ngā mihi

Tupe Solomon-Tanoa'i
Chief Philanthropic Officer

Highlights for this year

Māori lawyers as agents of mana-based change

Hosted by the University of Canterbury in July, this conference explored how lawyers can contribute to social justice by pursuing change grounded in mana and tino rangatiratanga.

Young adults in the criminal justice system

This research project will analyse and discuss a principled framework for reform for how the New Zealand criminal justice system engages with young adults.

Transforming women's imprisonment in Aotearoa

This research project explores alternative approaches for women's imprisonment including a rigorous assessment of open prison models.

Te Kaunoti Hikahika: Towards an inclusive legal pedagogy for Aotearoa New Zealand

The grant provides funding for a series of wānanga that will build a community of practice around education for constitutional transformation.

Ngā Pūrākau Ture o Aotearoa: Stories of Law in Aotearoa

A free online New Zealand legal stories project accessible to the general public through a fresh and modern multimedia approach.



Recipients of Michael & Suzanne Borrin Foundation individual funding in 2021. **Top left to right:** Sarah Barnaart, Natalie Pierce, Marozane Spammers. **Middle left to right:** Digby Livingston, Helen Dervan, Ronji Tanielu. **Bottom left to right:** Sarah Croskery-Hewitt, Myra Williamson, Anna High.

Our model

Creating reliable funding streams is at the heart of what we do. To provide sustainable support for organisations throughout the Wellington region, we invest all gifts we receive, however big or small, to create transformational change today, tomorrow and far into the future.



We are governed by passionate leaders

Our trustees are leaders in their fields, generously giving their time, skills and expertise to support and grow Nikau Foundation. In accordance with our Trust Deed, the Foundation can be governed by up to 14 trustees, each serving a three-year term with the possibility of reappointment.

We welcome diversity of thought

As part of our commitment to inclusivity, we regularly review the composition of our Board of Trustees and local committees to ensure they are representative of our communities. This process enables us to grow our team of skilled and committed trustees who actively work towards Nikau Foundation’s vision.

We identify the skills we need to grow

Our model is multi-faceted. We are an investor, grant-maker and fundraiser. To support each of these areas, we need a range of skills and expertise from across different sectors. A number of committees provide guidance and strategic oversight to manage key areas of risk and assurance, investments, marketing and communications and grant-making.

We are ethically minded

Our aim is to secure the social, economic and environmental wellbeing of our region – now and in the future. As part of this commitment, we work with our fund manager Hobson Wealth Partners to ensure that all our investments are made responsibly – avoiding direct investment into companies operating primarily in gambling, alcohol and other industries such as armaments.

We are a trusted partner

More and more people are choosing to invest in our model, and nowhere is this more evident than the 2016 bequest by Judge Ian Borrin who chose Nikau Foundation to manage his \$38 million legacy – now \$51.2 million – to drive a culture of social justice and equality for Aotearoa New Zealand.

We are also the corporate trustee of the Roy and Jan Mace Trust, jointly managing a \$1.5 million fund providing vital support for children, families and community development in Wellington and Wairarapa.



Image Credit: Sarah Kachwalla.

Enabling sustainable support for our region

In September 2020, Nikau Foundation adopted a new distribution policy, which ensures that grants can be sustainably distributed even in the face of uncertain economic conditions.

It's a challenge that many foundations face – how to ensure consistent annual funding for good causes when the markets fluctuate as they do. The approach aligns with the distribution policies of some of the largest endowments in the world (Yale and Stanford), which have been using a similar method successfully for decades.

This model sets a target distribution rate and smooths out market fluctuations to ensure more-consistent funding year on year. This will provide greater certainty, which is helpful for both donors and grant recipients.

Instead of distributing income and retaining capital gains, as we did previously, this revised policy focuses on long-term return expectations, allowing us to ride through market peaks and troughs and make more-consistent distributions. It has also given us the opportunity to diversify our portfolio, removing limitations of favouring investment in companies that pay high dividends.

This financial year's distributions were higher than last year's thanks to the consistent application of this policy. This is a great outcome given the low-yield environment and current market volatility. The total return achieved on our funds was well above the long-term expected rate of return allowing us to build a buffer for future market volatility to ensure consistent payment of distributions.

Our team

With a collective passion for our region, the Nikau Foundation team bring a wealth of skills and experience to our organisation.

Jericho Rock-Archer, Staff.

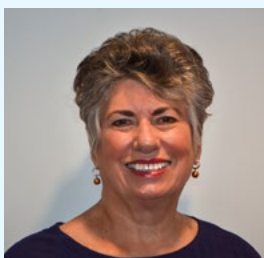


The Nikau Foundation team volunteering at the Wellington City Mission Toy Store.

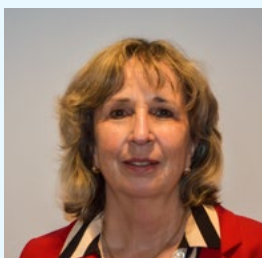
Back row left to right:
Alice Montague – Executive Director
Lindy Young – Operations Manager
Emma Lewis – Engagement Director

Front row left to right:
Adrienne Bushell – Development Manager
Maddie McLeod – Marketing and Communications Manager
Denisa Calian – Finance Manager

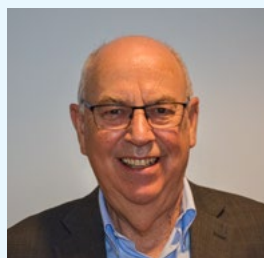
Our Board



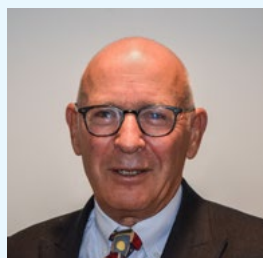
Dame Fran Wilde
 ● ● ● ● ● ● ● ●
 C



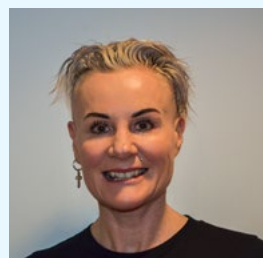
Liz Koh
 ● ● ● ● ● ● ● ●



Warren Allen
 ● ● ● ● ● ● ● ●



Richard Caughley
 ● ● ● ● ● ● ● ●



Susan Hornsby-Geluk
 ● ● ● ● ● ● ● ●



Chris Milne
 ● ● ● ● ● ● ● ●



Rebecca Morahan
 ● ● ● ● ● ● ● ●
 C



Adrienne Olsen
 ● ● ● ● ● ● ● ●
 JC



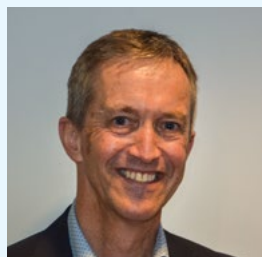
Adrian Orr
 ● ● ● ● ● ● ● ●



Rachel Roberts
 ● ● ● ● ● ● ● ●
 JC



Wendy Venter
 ● ● ● ● ● ● ● ●
 C



Peter Verhaart
 ● ● ● ● ● ● ● ●
 C

Co-opted members

- **Kevin O'Connor**
- **Tony Paine**
- **Ian Perry**
- **Jonathan Tompkins**

- Chair
- Deputy Chair
- Governance
- Audit and Risk
- Grants
- Marketing and Communications
- Investment
- C Chair of committee
- JC Joint Chair of committee

Dame Fran Wilde (Chair)

Dame Fran brings a wealth of leadership and governance experience from the public and private sectors. She is currently Chair of the boards of Te Papa Tongarewa, Whānau Āwhina Plunket and the Asia NZ Foundation and is a director on other boards. Fran is a former Cabinet Minister, Mayor of Wellington and Chair of the Greater Wellington Regional Council.

Liz Koh (Deputy Chair)

Liz is a certified financial planner, chartered accountant and chartered director based on the Kāpiti Coast. Liz is a well-known commentator in the area of personal finance and is actively involved in her local community being Vice President of Kāpiti Rotary, Treasurer of the Kāpiti Economic Development Association and Trustee of Creative Kāpiti Charitable Trust.

Warren Allen

With many years' experience in governance and advisory in both the public and private sectors, Warren is a past President of the New Zealand Institute of Chartered Accountants, former Country Director of Audit and past President of the International Federation of Accountants.

Richard Caughley

Richard is a lawyer and has been a partner of Morrison Kent since 1985. He is a member of the Morrison Kent board. Richard is the Nikau representative on the Grants and Scholarships Committee of the Michael & Suzanne Borrin Foundation.

Susan Hornsby-Geluk

Susan is the Managing Partner of Dundas Street, an award-winning specialist employment law firm based in central Wellington. Susan is rated by international agencies as one of the top three employment lawyers in New Zealand. She is a go-to person for complex strategic/high-profile matters, and her work is largely at chief executive or board level.

Chris Milne

Chris is a business and IT consultant. He has worked in accounting and banking locally and overseas, is a board member of Community Foundations of New Zealand, a trustee of Ngā Manu Nature Reserve and a company director of various trading companies.

Rebecca Morahan

Rebecca has over 20 years' experience in IT, project management, business process and consultancy. She is a current board member of Bellyful NZ and WELLfed, which she also co-founded. Rebecca has a passion for not-for-profit success through slick operations and strong governance.

Adrienne Olsen

Adrienne is the principal at Adroite Communications and has many years' experience in strategic communications, reputation management and public relations. She is chair of the Halberg Endowment Fund and is a life trustee of the Halberg Foundation.

Adrian Orr

With extensive experience in economics, public sector finance and international governance, Adrian is the current Governor of the Reserve Bank of New Zealand, former Chair of the International Forum of Sovereign Wealth Funds and the Pacific Pension and Investment Institute.

Rachel Roberts

With a background in journalism, radio production, strategy, communications and relationship management, Rachel has worked with many not-for-profits, businesses and government agencies to drive meaningful, practical outcomes and sustainable change. She is passionate about strategic leadership solutions and community-driven activation, supporting and consulting clients as diverse as philanthropic organisations and Search and Rescue.

Wendy Venter

Wendy is an independent board director and consultant. She is a former partner at EY, deputy chief executive at the Ministry of Social Development and assistant auditor-general. Wendy's areas of expertise are governance, risk management, organisational change, integrity and assurance.

Peter Verhaart

With over 30 years' experience in New Zealand investment markets and asset consulting with charities, Peter formerly headed up the NZ Multi-Asset Group at AMP Capital, served as General Manager of AXA Global Investors and was Head of Investment Consulting NZ at Mercer.

The Nikau family

Over the last 30 years, we have grown our Nikau Foundation family to a network of hundreds of volunteers, supporters and advocates, without whom we simply couldn't do what we do. We would like to thank everyone who has given their time, resources and expertise in helping us grow, improve our operations and effect positive change for our region since 1991. Thank you.



Tindall Foundation

Established in 1994 by Stephen and Margaret Tindall, the Tindall Foundation works throughout Aotearoa New Zealand to build stronger, self-sustaining communities. The Foundation believes that all New Zealanders should have the opportunity to reach their potential and to contribute to society.



Nikau Foundation distributed \$103,000 to organisations in our local communities in 2021 in partnership with the Tindall Foundation.

We are proud to be the Tindall Foundation's regional partner, helping it to make an impact locally through effective grant-making and by connecting with community organisations doing great mahi throughout our region. In line with our philanthropy strategy, Tindall grants are given to effect positive change in the areas of youth, families and community and make an impact for rainbow and former refugee communities.

Volunteers

We are fortunate to have a dedicated network of volunteers who help us to realise our vision every day. From our committed Board of Trustees to our regional committee volunteers, we are continually humbled by your work, efforts and commitment to our vision.

Nikau Champions

Leaders in their respective industries, our skilled network of Nikau Champions play a vital role in supporting Nikau's operations and ongoing growth. From a range of sectors, these individuals bring a wealth of experience, expertise and knowledge, for which we are immensely grateful. Over the next few years, our aim is to grow and nurture our Nikau Champion network. If you are interested in joining, please contact us.

John Allen

Nicola Black

Bob Francis

Melika King (Craigs Investment Partners)

Justin Martin (BDO)

Betsyn McHardy (Wakefield Lawyers)

Curtis O'Connor (Hobson Wealth Partners)

Alan Rench (Graeme Wright & Associates)

Bryan Shepherd (Jarden NZ)

Rebekah Swan (AMP Capital)

Claire Tyler (Rainey Collins)



May 2021. In Conversation with Sir Jerry Mateparae hosted by Corran Crispe.



April 2021. In Conversation with Adrian Orr hosted by Jehan Casinader.

Nikau Club

Established in 2008, our Nikau Club is made up of a generous network of like-minded individuals who support our day-to-day operations through an annual donation. Through their ongoing generosity, we can continue to deliver transformational change and increase our reach across the Wellington region. Every year, we deliver a compelling programme of events designed to connect our Nikau Club members with our communities.

It is our aim to welcome new Nikau Club members in 2022. By joining our Nikau Club, you are joining a movement for sustained change in our region, ensuring that Nikau Foundation has the tools and resources to make Wellington thrive.

Thank you to our Nikau Club members.

Annabel McCallum

Bryan and Jan Johnson

Chris and Jan Milne

Chris and Kathryn Mackay

Craig Thompson and Gail Jansen

Dianne Small*

Faith Taylor

Frank Pearson

Gary and Judy Black

Holdsworth Charitable Trust

Joanna Todd

John and Jay Benton

Julia O'Connor

Kevin O'Connor

Lloyd Morrison Foundation

Maree Fitzgerald

Margaret and Peter Shirtcliffe Foundation

Mark Dunajtschik

Mark McGuinness

Paul and Sheryl Baines

Rachel and Chris Roberts

Richard Caughley

Robert and Charlotte Fisher

Rodney and Vivien Callender

Warren and Anne Plimmer Foundation

* We would like to acknowledge the passing of Dianne Small in November 2021. We acknowledge the immense generosity of Dianne who, in partnership with her late husband Francis, supported Nikau Foundation and our local communities in many ways.

Corporate support

We are in the fortunate position of receiving support from a generous network of local and regional businesses. Thank you.



dundas street

H Q B S O N
W E A L T H



Mission Hall 

Morrison Kent Lawyers



Sharesight 

SPY
VALLEY
WINES

WAKEFIELDS
LAWYERS

Safeguarding organisational impact

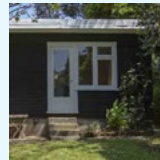
More and more organisations are partnering with Nikau Foundation to ensure they can achieve their organisational goals, better serve their communities and create transformational change long into the future. Thank you.

Four new organisational partners making an impact in their local communities.



Foureyes Fund

Aiming to identify and treat New Zealand children with eyesight problems and provide affordable eyewear.



Lilburn Residence Support Fund

Supporting the maintenance of the Lilburn Residence and the next generation of New Zealand composers.



Kāpiti Disability Support Fund

Delivering key support to disabled communities living in Kāpiti.



Rotary Club of Ōtaki Fund

Established to create a lasting legacy for the people and places of Ōtaki.



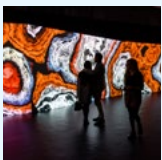
Chilton Old Girls' Association Fund

Supporting the development and student experience of Chilton Saint James School.



The National Collective of Independent Women's Refuges Fund

Ensuring critical support services, programmes and refuges for women and children experiencing family violence.



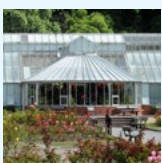
Experience Wellington Fund

Ensuring the future of Wellington's most iconic arts, cultural and educational sites.



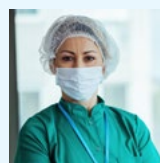
The Wharekaka Fund

Supporting the development of Wairarapa's Wharekaka Rest Home, which provides nurturing care and promotes independent living for the older generations.



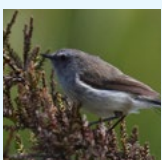
Friends of the Wellington Botanic Garden Endowment Fund

Supporting the delivery of events, lectures and workshops to deepen engagement and interest in the garden.



Wairarapa Nurses and Midwives Educational Fund

Providing scholarships for the development of professionals located in the Wairarapa region.



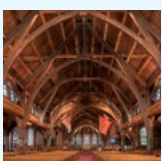
Ngā Manu Fund

Establishing a lasting legacy for the conservation of our native flora and fauna.



Wellington Youth Cricket Development Fund

Committed to supporting young people to realise their potential in cricket across the Wellington region.



The Friends of Old St Paul's Fund

Supporting this historic Wellington landmark – now and into the future.

“For us, partnering with Nikau Foundation removes the stress of having to rely on the success of that year's fundraising or sponsorships. We know the money is there, growing and ready to support the exciting projects we have coming up.”

Mazz Scannell, President, Friends of the Wellington Botanic Garden Endowment Fund

Celebrating 30 years of a movement



A letter from Community Foundations of New Zealand

Being the oldest generally means a couple of things are likely to be true. You're likely to always be the guinea pig, you will always be the role model and the journey can be extremely tough – yet in the end also highly rewarding. This is the story of Nikau Foundation, our oldest and first community foundation in Aotearoa New Zealand.

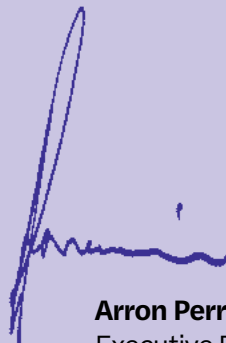
Today, donor-advised funds, like the endowment funds invested with community foundations, are one of the fastest-growing forms of philanthropy in the world. Community foundations enable a way of giving where you can be both strategic by ensuring the longevity of your giving and specific about what you want to support. It can be anything you choose, with investment returns continuing to give to your cause(s) of choice and creating social impact – forever!

While community foundations are relatively new in New Zealand, with Nikau Foundation being our first, and most of our 17 community foundations being established in the past 10 years, they are now beginning to take off with \$200 million in funds under management, including having grown 33% in the past year alone, a further \$400 million promised in wills for the future and having distributed over \$50 million to community groups over the past five years.

These big numbers only reflect part of the story though. The real story is the journey community foundations like Nikau Foundation have taken in partnering with local community organisations throughout New Zealand to strengthen communities and build regional charitable wealth and sustainability. Being the first means Nikau Foundation has paved the

way, shown leadership, taken knocks and provided a blueprint for other community foundations to follow. That's a BIG deal and a story of transformation that now plays out across Aotearoa New Zealand.

At Community Foundations of New Zealand, we're on a mission: Hei whakakaha i ngā hāpori o Aotearoa – strengthening the communities of New Zealand. We do this together as a collective of 17 vibrant regional community foundations, and together we congratulate the Nikau Foundation team, past and present, on 30 years of creating impact and for your commitment to strengthening communities in your region.



Arron Perriam
Executive Director

Community Foundations of New Zealand

Nikau Foundation
statement of financial position
As at 30 September 2021

	30 Sep 2021 \$	30 Sep 2020 \$
Assets		
Current assets		
Bank accounts and cash (admin)	501,127	221,559
Bank accounts and cash (endowment)	1,444	1,378,278
Debtors and prepayments (admin)	99,013	80,453
Debtors and prepayments (endowment)	10,518	0
Other current assets (admin)	250,000	240,000
Total current assets	862,103	1,920,290
Non-current assets		
Fixed assets (admin)	1,721	3,628
Investments (endowment)	19,950,842	15,099,524
Investment properties (endowment)	9,654,000	1,960,000
Total non-current assets	29,606,563	17,063,152
Total assets	30,468,665	18,983,441
Liabilities		
Current liabilities		
Creditors and accrued expenses (admin)	195,571	68,193
Creditors and accrued expenses (endowment)	40,000	0
Employee costs payable (admin)	28,906	16,785
Other current liabilities (endowment)	5,530	4,512
Total current liabilities	270,007	89,491
Net assets	30,198,658	18,893,950

Accumulated funds

	Opening balance \$	Annual change \$	Closing balance \$
Operating funds	474,747	72,769	547,516
Endowment funds	18,419,203	11,231,939	29,651,142
Total	18,893,950	11,304,708	30,198,658

Note: Nikau Foundation's 2020/2021 Performance Report (audited accounts) can be downloaded from nikaufoundation.nz/financials-and-policies

Financials

During the 1 October 2020 – 30 September 2021 reporting period, Nikau Foundation experienced our strongest financial performance to date, ending the financial year with \$29.7 million funds under management – an increase of 61% on last year.

This result was driven by excellent returns on investment and 12 new endowment funds, which collectively contributed \$8.4 million to the total funds balance. The most significant new endowment fund is the Kāpiti Disability Support Fund.

Nikau Foundation's accounts are split into administration and endowment ledgers, effectively ring-fencing donated endowment investments from Nikau's operating resources. This split is presented in the annual report to demonstrate the performance of each. The financial statements, however, show a combined view in order to comply with applicable financial reporting standards. The signed financial statements received an unmodified audit opinion from KPMG and are available on the websites of both Charities Services and Nikau Foundation.

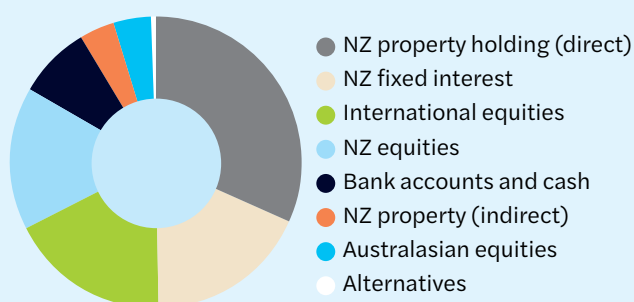
The Foundation generated a surplus of \$11.3 million for the year ending 30 September 2021, which is made up of \$11.2 million from the endowment account and \$0.1 million from the administration account.

Endowments

The endowment surplus of \$11.2 million relates mainly to new endowment funds set up during the year. The real value of the funds is kept in perpetuity and only the net return after fees is distributed via community grants. These new funds will distribute grants in the following financial year.

The Foundation had 66 endowment funds under management as at 30 September 2021 with a value of \$29.7 million, up from 53 funds last year totalling \$18.4 million. The majority of endowment fund assets (\$20.0 million, 68%) are pooled and invested with Hobson Wealth Partners. The portfolio is split between 60% growth assets and 40% defensive assets – a balancing that has achieved a strong performance in FY21 and has resulted in a gross return (before fees and taxes) of \$12.4%, up from 4.4% last year. The remaining \$9.7 million (32%) of the endowment assets are investments in direct property holdings, which are managed by Industrious Property. The market valuation of this property increased by \$1.6 million at year end whilst also realising a 2.8% rental return over the year.

The Nikau Foundation investment breakdown is illustrated in the below pie chart.



A management fee is charged by Nikau Foundation's administration accounts to its endowment funds. This internal charge supports the oversight of the investments, our operations and the Foundation's critical grant-making function. The fee amounted to \$238,000 for the year. Whilst it is an internal charge for financial reporting purposes, it is shown in these reports as expenditure in the endowment account and income in the administration account.

Over the year, Nikau Foundation distributed \$576,395 (2020: \$382,721) of endowment grants alongside a further \$326,439 (2020: \$515,229) of pass-through grants. In total, we gave out 251 grants to organisations operating throughout the Wellington region, an increase of 67 from last year. The funds available for distribution are determined at the end of each financial year for the following year, and therefore, the above performance will influence next year's grants.

Administration

The administration account shows a surplus of \$72,769 for the year driven by an increase in income. This surplus is held for operational purposes.

Administration income has increased by \$166,679 due to an increase in fees earned as a result of the aforementioned endowment fees and other corporate trustee fees. The Foundation also appreciates the generous donations of the Nikau Club members, which have increased by \$21,000 from last year.

Administration expenses have been tightly managed and have only increased by \$25,277 during the year. Although professional fees have increased by \$28,408 from last year, they relate to fees incurred on behalf of newly set-up funds, and these fees are usually reimbursed from the incoming funds themselves.

The net result is an increase in operating accumulated surpluses from \$474,747 to \$547,516, which represents approximately 72% of the next year's budgeted administrative expenditure.

Nikau Foundation statement of financial performance For the year ended 30 September 2021

	12 months to 30 Sep 2021	12 months to 30 Sep 2020
Income		
Total income – administration	736,494	569,815
Total income – endowment	12,200,726	4,238,121
Total income	12,937,220	4,807,937
Expenditure		
Total expenditure – administration	663,725	638,448
Total expenditure – endowment	968,787	638,807
Total expenditure	1,632,512	1,277,255
Total surplus for the year	11,304,708	3,530,682
Endowment account		
Income		
Endowments received	8,246,778	3,213,838
Investment income	1,067,274	405,798
Investment revaluation	2,886,674	618,486
Endowment – total income	12,200,726	4,238,121
Expenditure		
Grants and donations	576,395	382,721
Investment property expenses	87,368	49,138
Trustee and portfolio management fee	305,024	206,948
Total expenditure	968,787	638,807
Surplus from endowment account	11,231,939	3,599,315
Administration account		
Income		
Donations and sponsorship	117,725	88,154
Endowment, grant distribution and corporate trustee fees	615,453	475,259
Interest received	3,316	6,402
Total income	736,494	569,815
Expenditure		
Audit fee	10,350	11,100
Depreciation	1,131	3,474
Donations	300	2,000
Insurances	6,385	4,775
IT expenses	28,224	53,135
Office expenses	52,043	54,105
Professional fees	50,620	22,213
Promotion and publicity	25,263	49,432
Volunteer and employee related costs	464,196	427,115
Other expenses	25,213	11,099
Total expenditure	663,725	638,448
Surplus (deficit) from administration account	72,769	(68,632)



Image Credit: Mountains to Sea Wellington.



T 04 381 2224
info@nikaufoundation.nz

Level 5
166 Featherston Street
Wellington 6011

PO Box 24-220
Manners Street
Wellington 6142

www.nikaufoundation.nz